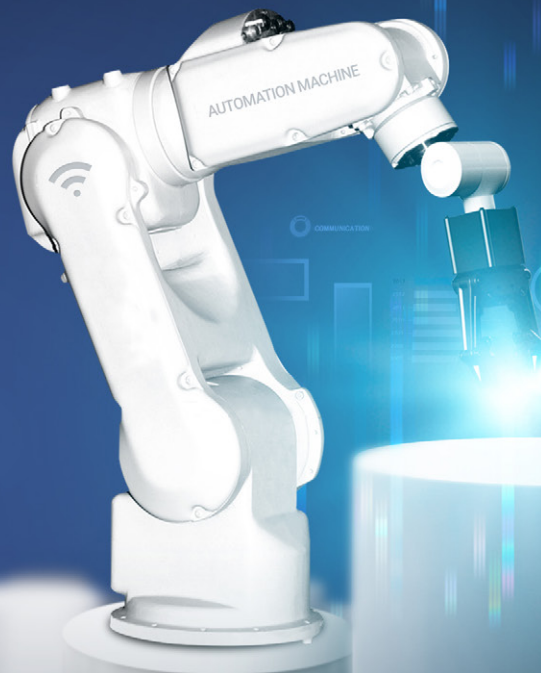


2021 AMS PROFILE

To view our products..

www.ams-fa.com





2002

AMS, Inc was founded in 2002 to provide innovative systems, products, and solutions to manufacturing industries in North and South America



for 19 years

We have engineered automated equipment to implement lean manufacturing process while providing continuous improvement.



2021

Today, AMS is a leader in factory automation. We deliver advanced, technology-driven products and services to enable cost-effective growth for our clients.





BUSINESS INTEGRITY

AMS believe in honesty, diligence and reliability. We hold ourselves to the highest ethical standards to strengthen relationship with our clients and suppliers.



SOCIAL RESPONSIBILITY

AMS is committed to sustainable development. We aim to promote environmental friendly products through research and procurement.



PEOPLE FIRST

AMS value diversity and innovation. We care about people and the impact of our decisions on those around us.

R&D TEAM

AMS Research and Development team focus in advanced technology that will benefit people.
A super-intelligent, human-friendly technology that will provide limitless factory automation.

01 RESEARCH

We study, analyze and develop systems to simplify the work that people do.



02 DEVELOPMENT

We develop new, innovative, and customized systems to increase work productivity while simplifying human tasks.



03 PRODUCTION

We produce efficient and convenient systems to meet client needs



GREEN TECHNOLOGY

At AMS, we think of people and environment first.
That's why we focus our investment and research in sustainable growth and products.

Clean Air

ECO Nozzle Cleaner



Reusable paper
 Hazardous waste reduction
 CO2 Emission
 Up to **80%** Decrease

Zero Waste

Aluminum MRS

Aluminum is an endless recyclable material.



Protect nature



Save money



Conserve Energy

Pneumatic Stencil Cleaner



NO Electricity




Environmental pollution Greenhouse gas

DOWN

Green Chemistry

ECO Nozzle Cleaner



-  Avoid harmful substances
-  Use of natural ingredients
-  Protecting nature and humanity

ABB

ADIEN[®]

AERnova

AETHRA
SISTEMAS AUTOMOTIVS

AgriTech

AISIN

AiSYS
All Integrated Systems

ALCATEL

ALPINE
Driving Mobile Media InnovationPerfecting the Art of Electronics
ALPS[®]

amazon

American
Standard
PART OF LIXIL

AMONIX

Amphenol

AMVIAN
do Brasil Ltda.GRUPO
ANTOLIN

• APTIV •

ARTEB

ASHIMORI

ASMO

Audi

Autoliv

AVIBRAS

▶ Benchmark
electronics

Baumer

Boyer

BMW

BOMBARDIER
AEROSPACE

BOMBARDIER

BorgWarner

BOSE[®]

Brascabos

BREG

BRP

Cal-Comp

Calsonic Kansei

CAREL

CATERPILLAR

CELESTICA

CEWS

CHERRY

Clarion

CLIPTECH

CNH
INDUSTRIAL

COMAU

COMPAL

COOPER

DAFRA

DAYCO
MOVE FORWARD. ALWAYS.™

DELL

DELPHI
Innovation for the Real World

DENSO

DJK

DRAXLMAIER

DUCATI

EATON

Electrolux

← EMBRAER

EMERSON

ENVISION

faurecia

FCA
FIAT CHRYSLER AUTOMOBILESFEDERAL
MOGULFERBA
TECNOLOGÍA AGROINDUSTRIAL

FLEXTRONICS X

Ford

formtap
INDUSTRIE E COMMERCIO S.p.A.FOXCONN[®]FUJITSU TEN
FUJITSU TEN SOLUTIONS PHILIPPINES, INC.FURUKAWA
ELECTRIC GROUP

GE







AUTOMATION AND ENGINEERING

State of the art technology
providing production flexibility and
acceleration.



LEAN MANUFACTURING

Lean logistics and material handling
management for production and assembly lines.



SMT SOLUTION

Superior quality components at cost-effective prices
on most major brands of assembly equipment.



ESD CONTROL

Products specifically designed for ESD processes
with high quality and world-class performance.

AUTOMATION & ENGINEERING

Total automated production solutions from engineering consulting, design, and products. Innovated and economical products include SMT Equipment, PCB Handling Conveyor, Laser Marking System, AGV, and ErgoLift.



INSERTION MACHINES
FUSE-TERMINAL-RELAY-ODDFORM



BHU(SMT) CONVEYORS



PCB LASER MARKER



AUTO LABEL PLACER



INKJET MARKING MC



PCB SURFACE CLEANER
(AR TYPE & VACUUM TYPE)



CONFORMAL COATING
INSPECTION SYSTEM



METAL MASK
INSPECTION SYSTEM



AOI
(ODD FORM PARTS)



PCB ROUTER
(STANDALONE & IN-LINE)

AUTOMATION & ENGINEERING

Total automated production solutions from engineering consulting, design, and products. Innovated and economical products include SMT Equipment, PCB Handling Conveyor, Laser Marking System, AGV, and ErgoLift.



PCB LASER DEPANELIZER



AUTOMATIC MAGAZINE WIDTH
ADJUSTMENT MC



SELECTIVE SOLDERING MC



WAVE SOLDERING MC



AIR BALANCER



COLLABORATIVE ROBOT



CO2, FIBER, UV, GREEN LASER



3KW LASER CUTTING MC
FOR STEEL SHEET



AUTO SCREW/
NUT FASTENING MACHINE



AUTO WELDING ROBOT

LEAN MANUFACTURING

Lean material handling and factory automation possibilities with MRS, AL MRS, EZ-Pro, Micro Deck Panel, and Wire Shelf.

SLIDING RACK



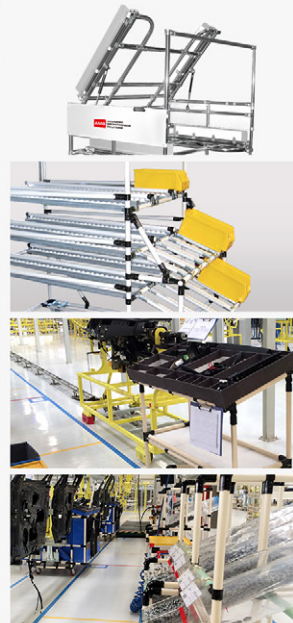
WORK STATION



CARTS (DOLLY)



LINE SIDE RACK



KARAKURI



LEAN MANUFACTURING

Lean material handling and factory automation possibilities with MRS, AL MRS, EZ-Pro, Micro Deck Panel, and Wire Shelf.



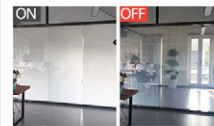
SMART LIGHT/
SMART GATE



CASTER WHEELS



SCREW DRIVERS



SMART SCREEN



AGV
(AUTOMATIC
GUIDED VEHICLE)



AMR
(AUTONOMOUS
MOBILE ROBOT)



MODULAR
RACKING SYSTEM



ALUMINUM
PROFI LE



PMP
(PICK TO LIGHT:
POKAYOKE)



POWER PALLET



POWER CART



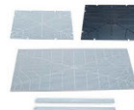
POWER ROLL



ERGONOMIC LIFT
(AUTOMATIC &
MANUAL)



EZ-PRO
(SCRATCH FREE)



EZ-SLIDE



COLLAPSIBLE/
RETURNABLE
BOXES &
DANPLA SHEET

SMT SOLUTION

Wide variety of SMT Parts with quality from splicing tapes to glue, here you can get most of the parts you need in SMT processes

GO GREEN



STENCIL MASK CLEANER

GO GREEN



BHU(SMT) CONVEYORS



N2 GENERATOR

GO GREEN



NOZZLE SUCTION ROUTE CLEANER

GO GREEN



NOZZLESCOPE



STRESS ZERO PCB V CUTTER



PCB "V" CUTTER



SMD COMPONENT COUNTER



AUTOMATIC SOLDER PASTE DISPENSER



RH DRY CABINET

SMT SOLUTION

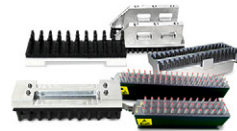
Wide variety of SMT Parts with quality from splicing tapes to glue, here you can get most of the parts you need in SMT processes



STANDARD & CUSTOM NOZZLE



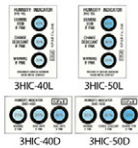
UNDER STENCIL PAPER ROLL



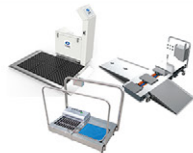
FBUP & MBUP FOR MOUNTER & PRINTER



SQUEEGEE BLADE FOR SCREEN PRINTER



HUMIDITY INDICATING CARD



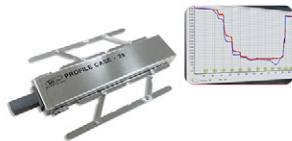
SHOE SOLE/ CASTER WHEEL CLEANER



WAVE CHECKER



REFLOW CHECKER



IN-LINE O2 (N2) ANALYZER



UI-HI CAMERA



SPLICE TAPES, CLIPS & DEVICE



TAPE/LABEL DISPENSER

ESD CONTROL

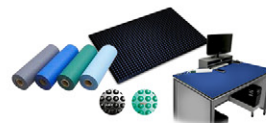
Superior quality components at cost-effective prices on most major brands of assembly equipment.



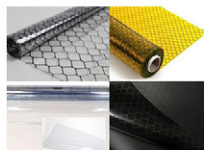
SOFT X-RAY &
CORONA IONIZER



CONDUCTIVE MAGAZINE
RACK



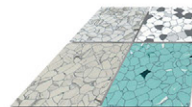
ESD TABLE/
FLOOR ANTI-FATIGUE MAT



ESD PVC CURTAIN



ESD CLEAN
ROOM PVC FILM



CONDUCTIVE TILES



HAND CLEANING
ROLLER



HAND-HELD
ELECTROSTATIC
FIELD METER



ESD TESTER



TURNSTILE GATE



ANTISTATIC HEEL
STRAP /
WRIST STRAP



ANTISTATIC
MOISTURE
PROOF BAG /
SHIELDING
BAGS



CONDUCTIVE
CIRCULATION
BOXES



CONDUCTIVE
PCB CARTS

AMS, INC.

Advanced Mechatronics Solutions, Inc
10030 Via de la Amistad, San Diego, CA 92154

T: +1 (619) 661-5985

F: +1 (619) 661-5995

E: ams@ams-fa.com

**AMS de MEXICO**

AMS Factory Automation de Mexico SA de CV
Polígono Buenavista – Calle Cementera Lote 9, Mz 8
Ejido Buenavista - Querétaro, Qro. 76225

T: +52 (442) 312-0920

E: mexico@ams-fa.com

**AMS do BRASIL**

AMS do Brasil Automação Industrial Ltda

Rua Laerte de Paiva, 344, Bairro Macuco, Valinhos – SP-CEP 13279.451

T: +55 (19) 3849-5555

E: quote@ams-fa.com

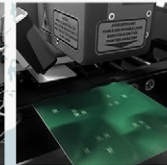
AMS Dynamics, Inc.

2979 Pacific Drive Suite A Norcross, GA 30071

T: +1 (770) 864-5394

F: +1 (678) 691-1847

E: infoATL@ams-fa.com





ADVANCED MECHATRONICS SOLUTIONS, INC

Automation, SMT & Lean manufacturing

To view additional products..

www.ams-fa.com

