

SELECTIVE SOLDERING M/C

SMART
TECHNOLOGY

| | 6 | 1 | 4 | 5 |
|---|----------|------------|---------|----------|
| ▲ | REVISION | DATE | MADE BY | APPROVED |
| ▲ | - | 0000.00.00 | - | - |
| ▲ | - | 0000.00.00 | - | - |



AMS

ADVANCED
MECHATRONICS
SOLUTIONS, INC

ams-fa.com
ams@ams-fa.com
619.661.5985

10030 Via de la Amistad, San Diego, CA 92154



FEATURES

SELECTIVE SOLDERING M/C

Standard Features

- 40mm Roller Conveyor
- Conveyor Auto Width Adjust
- Auto Side Fix
- Press Plate
- Jeting Fluxer
- Flux Volume Control-Flow Sensor
- IR Pre-heater and IR Sensor (Adjustable-up or down)
- Teaching Camera, Real-Time Image Camera
- Nozzle Height Calibration and Wave Height Measurement
- N2, O2 PPM Measurement, Flow Meter
- SMEMA Compatible
- 3, 4, 5, 6, 8, 10, 12, 15~Soldering Nozzle
- 0.15, 0.19 Flux Nozzle
- Dreg clean tools, Tool Kit
- Clean Handcart
- Auto Solder Feeding Kit (1.6mm Solder)

Options

- Solder Upper Side Pre-Heater
- 50~100mm Wave Nozzle Kit
- Spray Fluxer
- Additional Soldering Nozzle (Short, Long Nozzle)
- Pre-Heater Up/ Down Adjustable
- Lead Wave Temperature Measurement (Real Time)



IN-DEPTH FEATURES

01

Conveyor

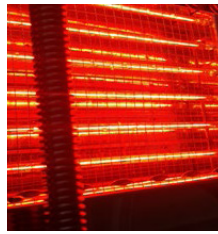
40mm roller conveyor constructed with Spur Gear yielding a quiet and stable performance.



02

Pre-Heater

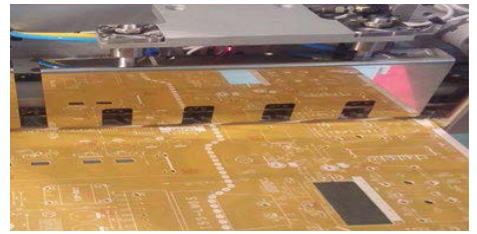
Pre-Heater maintains proper PCB temperature with IR sensor. Up-Down position is adjustable.



03

Pressure Jig

PCB Stopper applies side fix pressure. Auto adjustable with conveyor width.



04

Auto-Feeder

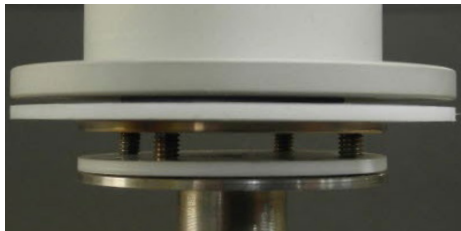
Bar Solder Feeding and 1.6MM Lead Auto-Feeding.



05

Impala

Impala reduces Heat Transfer to top bearing.



IN-DEPTH FEATURES

01

Solder Nozzle

Smooth lead flow prevents heat loss.



02

Flux Deposition Sensor

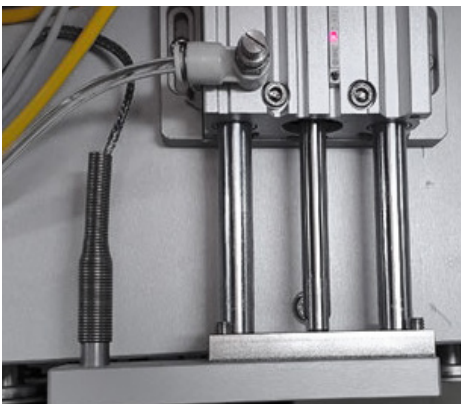
Real-Time measurement of dispensing and amount volume.



03

Real-Time Lead Measure

Real-Time Temperature Measurement of Lead WAVE.



04

Teaching, Image Camera, and Monitoring

Teaching Camera and Real-Time Solder Monitoring.



IN-DEPTH FEATURES

01

Additional Soldering Nozzle

3,4,5,6,8,10,12,15~Soldering Nozzle
(Short, Long Nozzle).



02

Digital Sensor

Detect nozzle height with laser sensor
to calibrate and measure wave height.



03

Real-Time Lead Measure

Apply ceramic coating and heat
treatment to prevent lead corrosion.



04

Teaching, Image Camera, and Monitoring

5mm Application Area +1mm Scatter / 0.1~0.2cc Dispensing
Easy to maintain, accurate dispensing, and cost efficient.



SOFTWARE PROGRAM

01

Evasion Function

Accelerate movement with individual parts.

02

Teaching Program

Coordinated data can be analyzed and saved automatically by specifying desired position.

03

WAVE Surface Test

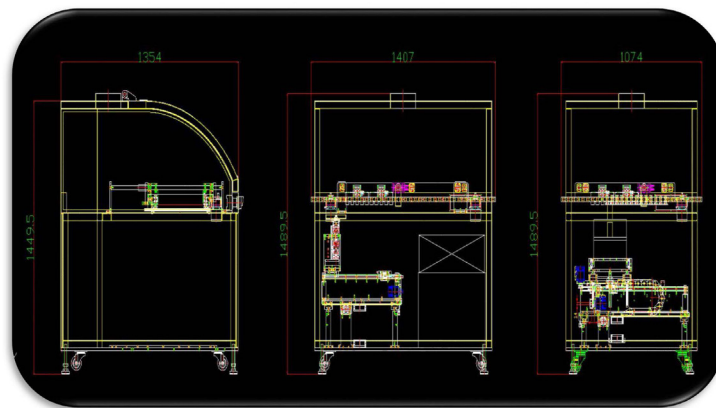
Measure lead WAVE level and Test WAVE surfacing manually.



DIMENSION

SELECTIVE SOLDERING M/C

| | |
|--------------------------|---|
| Board Size | Min 50 x 50, Max 300 x 450mm, 450 x 550mm |
| Height Clearance | 40 x 40mm, 100 x 100mm |
| Extraction | 200mm |
| Fluxer Tank Capacity | 3 Liter Sus Tank (Ento-tank PE 2 Liter) |
| Nitrogen Supply Pressure | 3 Bar |
| Nitrogen Usage | 30~60 Liter/ min (99.9%) |
| AIR Supply Pressure | 5 Bar |
| Solder | 17kg |
| Power | 220V 12.5KVA (1 Flux, 1 Pot) Single Phase 50/60Hz (FLUX 7.5KVA, POT 5KVA) |



LAYOUT

SELECTIVE SOLDERING M/C

