



AMS ADVANCED
MECHATRONICS
SOLUTIONS, INC

INTRODUCTION OF PRODUCTS

ESD MICROFIBER MAT

THIN ESD MICROFIBER MAT

ESD TAPE

ESD ANTI-FATIGUE MAT

1 ESD MICROFIBER MAT FOR
ANTI-SCRATCH OF ELECTRONIC PARTS

2 ESD TAPE FOR PROTECTION
OF TABLE WEDGE

3 ESD ANTIFATIGUE MAT FOR
STANDING WORKER

AMS, INC.

10030 Via de la Amistad San Diego CA
92154, United States
Call: +1 619-661-5985
Fax: +1 619-661-5995
Email: ams@ams-fa.com

AMS do BRASIL

Rua Laerte de Paiva, 344 Bairro Macuco
Valinhos-SP-CEP 13279.451
Call: +55 19-3849-5555
Email: quote@ams-fa.com



1 - 1 ESD MICROFIBER MAT

APPLICATION

SPECIFICATION

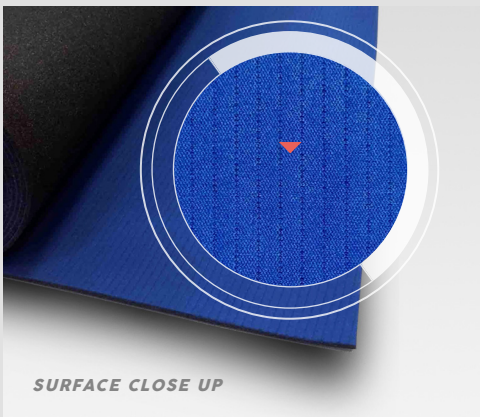
FEATURES

APPLICATION

Anti-scratch tabletop of inspect lines
for sensitive electronic parts

FEATURES

- / Smooth and soft surface for anti-scratches
- / Cushion for anti-shock
- / Good ESD properties (need ground)



SURFACE CLOSE UP

SPECIFICATION

STRUCTURE

Top : ESD Microfiber
(Surface Resistance : $10E6 - 7\Omega$)

Base : ESD Acrylic Adhesive
(S.R. : $10E4\Omega$)

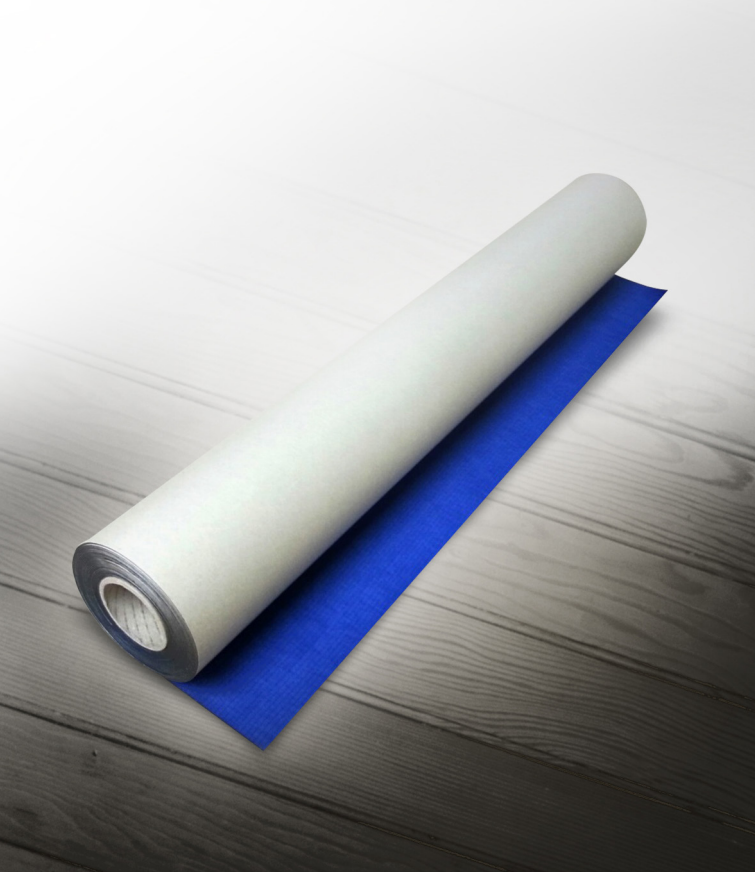
Bottom : ESD Acrylic Adhesive
(S.R. : $10E7 - 8\Omega$)

SIZE

960 * 9,500 * 2.7mm

COLOR

Dark Blue



1 - 2 THIN ESD MICROFIBER MAT

APPLICATION

SPECIFICATION

FEATURES

APPLICATION

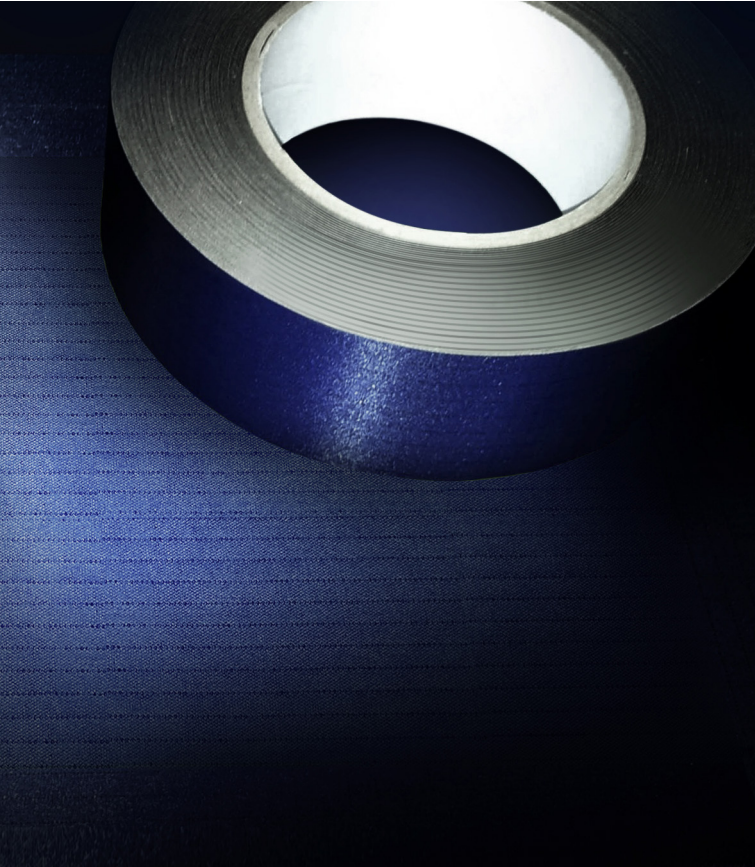
Anti-scratch tabletop of inspect lines
for sensitive electronic parts

FEATURES

- / Smooth and soft surface for anti-scratches
- / Rational Price
- / Good ESD properties (need ground)

SPECIFICATION

STRUCTURE	Top : ESD Microfiber (Surface Resistance : $10E6 - 7\Omega$) Base : Conductive Non oven Fabric (S.R. : $10E4 - 5\Omega$) Bottom : ESD Acrylic Adhesive (S.R. : $10E7 - 8\Omega$)
SIZE	700 * 10,000 * 0.9mm
COLOR	Dark Blue



2 ESD FABRIC TAPE

APPLICATION

SPECIFICATION

FEATURES

APPLICATION

To protect of table edge for electronic assembly lines.

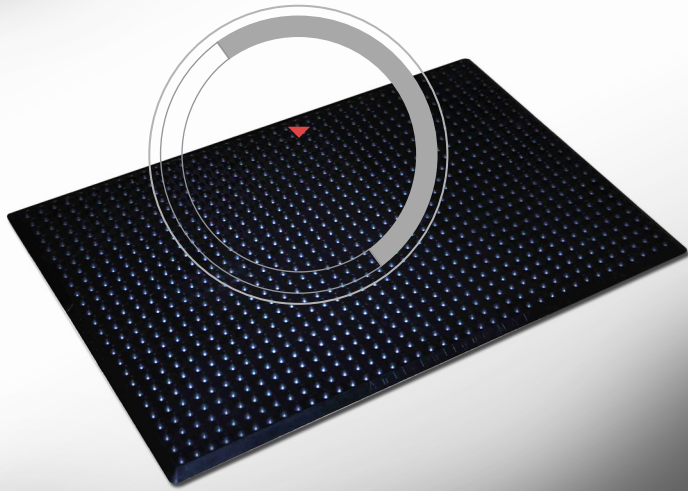
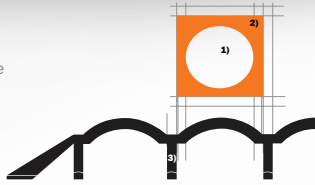
FEATURES

- / Flexible and Durable
- / Strong adhesive
- / Good ESD properties
- / Made in Korea

SPECIFICATION

THICKNESS	0.18mm
SIZE	40* 30,000mm / roll
MATERIAL	Top : ESD Fabric Bottom : ESD Acrylic Adhesive
SURFACE RESISTANCE	Top : 10E6 ~ 7ohm Bottom : 10E7 ~ 8ohm
COLOR	Dark Blue

- 1 Hollow Hemisphere
- 2 Upper Plate
- 3 Cushion Walls



3 - 1 ESD ANTI-FATIGUE MAT (ESD CUSHION NBR)

SPECIFICATION

FEATURES

UNMATCHED SAFETY FEATURES

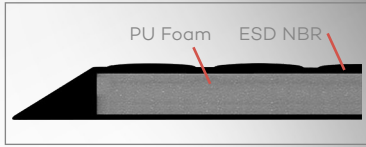
- 1 THREE PARTS OF CUSHION STRUCTURE**
Not only anti-fatigue, but true ergonomic benefits
- 2 MOLDED BELEVED EDGES**
They will never curl up, eliminate tripping hazards

ESD NBR (Nitrile Butadiene Rubber) ADVANTAGE

- 1 CHEMICAL RESISTANCE**
Chemical exposure will not affect the state of the mat, no curling up, swelling or expanding
- 2 CONDUCTIVE NBR WITH SUPERIOR ABRASION RESISTANCE**
 - / Perfect static control
 - / Cleanroom ISO Class 5 (Class100)
 - / Silicone & Latex-free

SPECIFICATIONS OF ESD ANTI-FATIGUE MAT (Type C : ESD Cushion NBR)

PROPERTIES	STANDARD	SPECIFICATIONS
MATERIALS		Conductive NBR
STRUCTURE		Cushion Structure
COLOR		Black
SIZE		600x900 / 450x600mm & Order size
THICKNESS		16mm
WEIGHT		3.4 / 1.7 Kg
HARDNESS	ISO 868	50 - 60 Sh-A
COMPRESSABILITY	Tinby AJS standard	45%
DEGREE OF ABRASION	ISO 46 49 (5N)	63mm ³
TEAR STRENGTH	ISO 34 Method C	36 N / mm
ELONGATION	ISO 37	400%
ELECTRICAL RESISTANCE (SURFACE)	IEC-613404-11 ESD STM7.1 - 2001	10e5 ~ 10e6Ω
THERMAL RESISTANCE/ MAXIMUM SHORT DURATION	The ergonomic properties remain	600 C°
CLEANROOM APPLICATION	ISO 14644-1	Class 100
WARRANTY		5 years



600x900mm

3-2 ESD ANTI-FATIGUE MAT (ESD SMOOTH MULTILAYER)

SPECIFICATION

FEATURES

UNMATCHED SAFETY FEATURES

- 1 THREE LAYER STRUCTURE**
with inner PU Foam. Not only anti fatigue, but also true ergonomic benefits
- 2 GENTLY SLOPED EDGES** will never curl up, eliminate tripping hazards
- 3 COMPLETELY SMOOTH**
Not only easy clean-ability, but also ideal if carts must be used

ESD NBR (Nitrile Butadiene Rubber) ADVANTAGE

- 1 CHEMICAL RESISTANCE**
Chemical exposure will not affect the state of the mat, no curling up, swelling or expanding
- 2 CONDUCTIVE NBR WITH SUPERIOR ABRASION RESISTANCE**
 - Perfect static control (Surface Resistance: 10E5 - 10E6 ohm)
 - Cleanroom ISO Class 5 (Class100)
 - Silicone & Latex-free

SPECIFICATIONS OF ESD ANTI-FATIGUE MAT (Type D : Smooth Multilayer)

PROPERTIES	STANDARD	SPECIFICATIONS
MATERIALS		ESD NBR + Polyurethane Foam
STRUCTURE		3 Layer
COLOR		Black
SIZE		600x900 / 450x600mm
THICKNESS		13mm
WEIGHT		2.8 / 14 Kg
HARDNESS	ISO 868	50 - 60 Sh-A
COMPRESSABILITY	Tinby AIS standard	50%
DEGREE OF ABRASION	ISO 46 49 (5N)	63mm ³
TEAR STRENGTH	ISO 34 Method C	36 N / mm
ELONGATION	ISO 37	400%
ELECTRICAL RESISTANCE (SURFACE)	IEC-613404-11 ESD STM71 - 2001	10e5 ~ 10e6Ω
THERMAL RESISTANCE/ MAXIMUM SHORT DURATION	The ergonomic properties remain	600 C°
CLEANROOM APPLICATION	ISO 14644-1	Class 100
WARRANTY		5 years