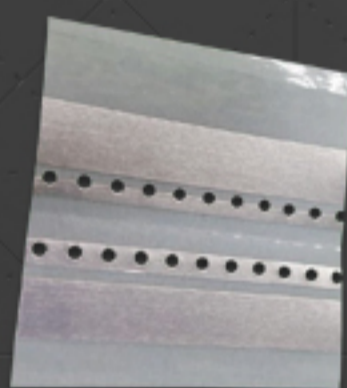




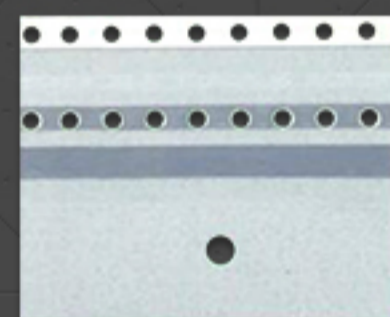
PRODUCTS USAGE

DOUBLE



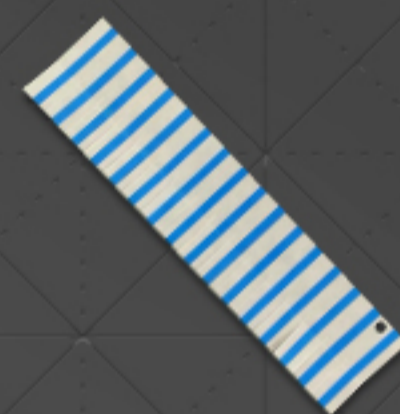
Connecting
Carrier Tapes

EMB



Connecting
Embossed
Carrier tapes

SINGLE



Connecting cap
or Cover Tape

REMOVAL



Peel Off Tape or
Removal Tape

CUTTING JIG



Cut for Carrier
Tapes straight

JIG



Jig for connecting
carrier tapes

FIX TAPE



Fixing the carrier
tapes in the Jig

OTHERS



Consumable &
Service Parts

CUTTING JIGS

SPLICE CUTTING JIG

Descriptions	Specification	Model No.
S CUTTING JIG	8mm Width 1/2/4 PITCH	SCJ-108



→ **APPLICATION** Cutting the carrier tapes

→ **USAGE** 8 Paper/Embossed
1/2/4 Pitch Standard

*Pitch: Cavity center to Center

1 pitch: 1mm(as option for 4mm width)

2 pitch: 2mm

4 pitch : 4mm



FEATURES

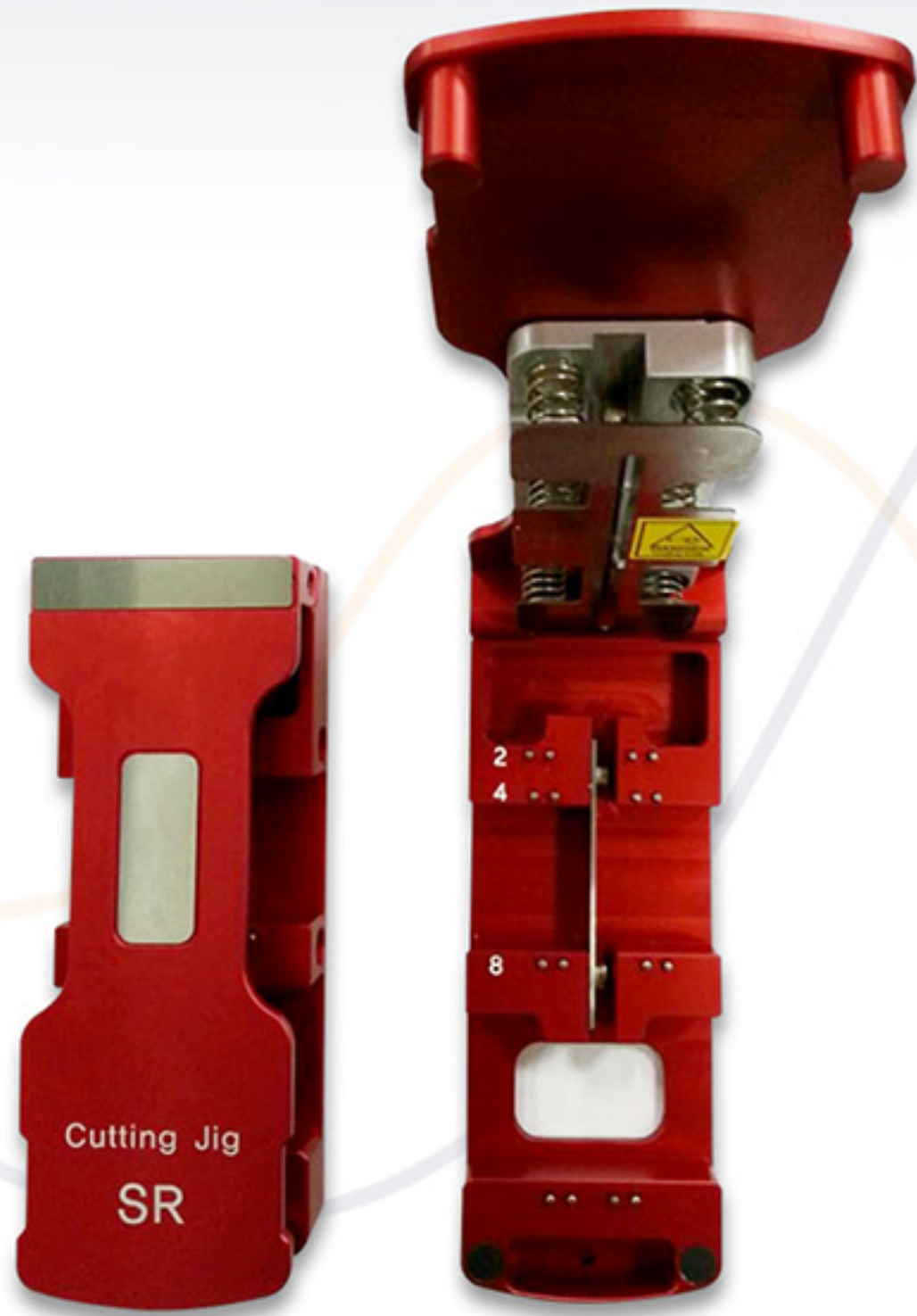
- ✓ Easy, Convenient, Quick splicing
- ✓ No splicing error
- ✓ Straight Cutting
- ✓ Hold carrier tape by hand
- ✓ As scissors type(Top & Bottom Blades)

※ Wearable with a neck chain

※ Can do splice on the trolley etc after fixing by double tapes

SPLICE CUTTING JIG

Descriptions	Specification	Model No.
S CUTTING JIG	8mm~32mm Width 2/4/8 PITCH	SCJ-132



[Custom Made: 72/102/150mm]

➔ **APPLICATION** Cutting the carrier tapes

➔ **USAGE** 8~32mm Paper/Embossed
2/4/8 Pitch Standard

*Pitch: Cavity center to Center

2 pitch: 2mm

4 pitch: 4mm, 12mm, 20mm, 28mm

8 pitch : 8mm, 16mm, 24mm, 32mm



FEATURES

- ✓ Easy, Convenient, Quick splicing
- ✓ No splicing error
- ✓ Straight Cutting
- ✓ Hold carrier tape by hand
- ✓ As scissors type(Top & Bottom Blades)

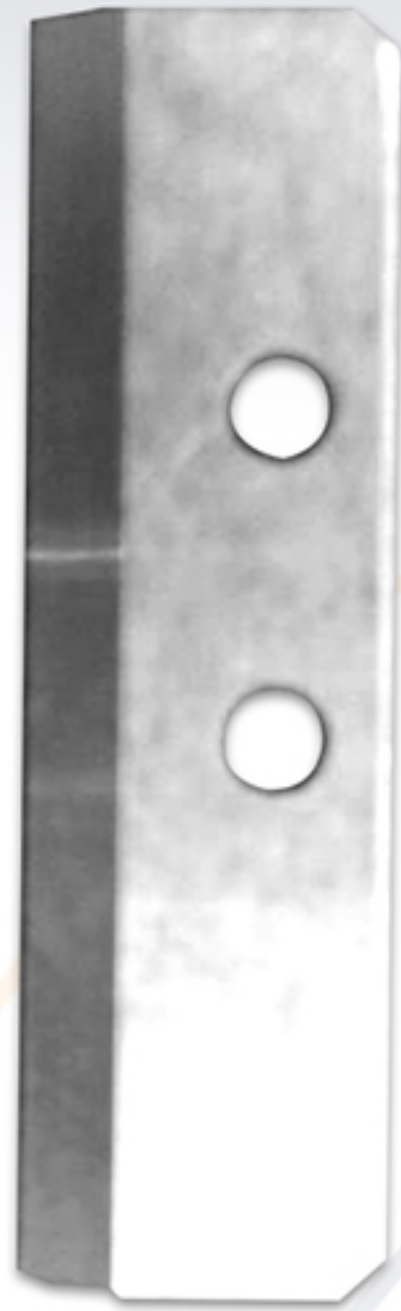
※ Wearable with a neck chain

※ Can do splice on the trolley etc after fixing by double tapes

The image features a solid blue background with a subtle, intricate pattern of white lines that resemble a circuit board or a network diagram. The lines are thin and vary in thickness, creating a complex, interconnected web of paths across the entire surface. In the center of the image, the word "BLADES" is written in a bold, white, sans-serif font. The letters are evenly spaced and have a slight shadow or drop effect, making them stand out prominently against the blue background and the circuit pattern.

BLADES

BLADES



[Cutting Jig Blade SCJ-108 TOP]



[Cutting Jig Blade SCJ-108 Bottom]



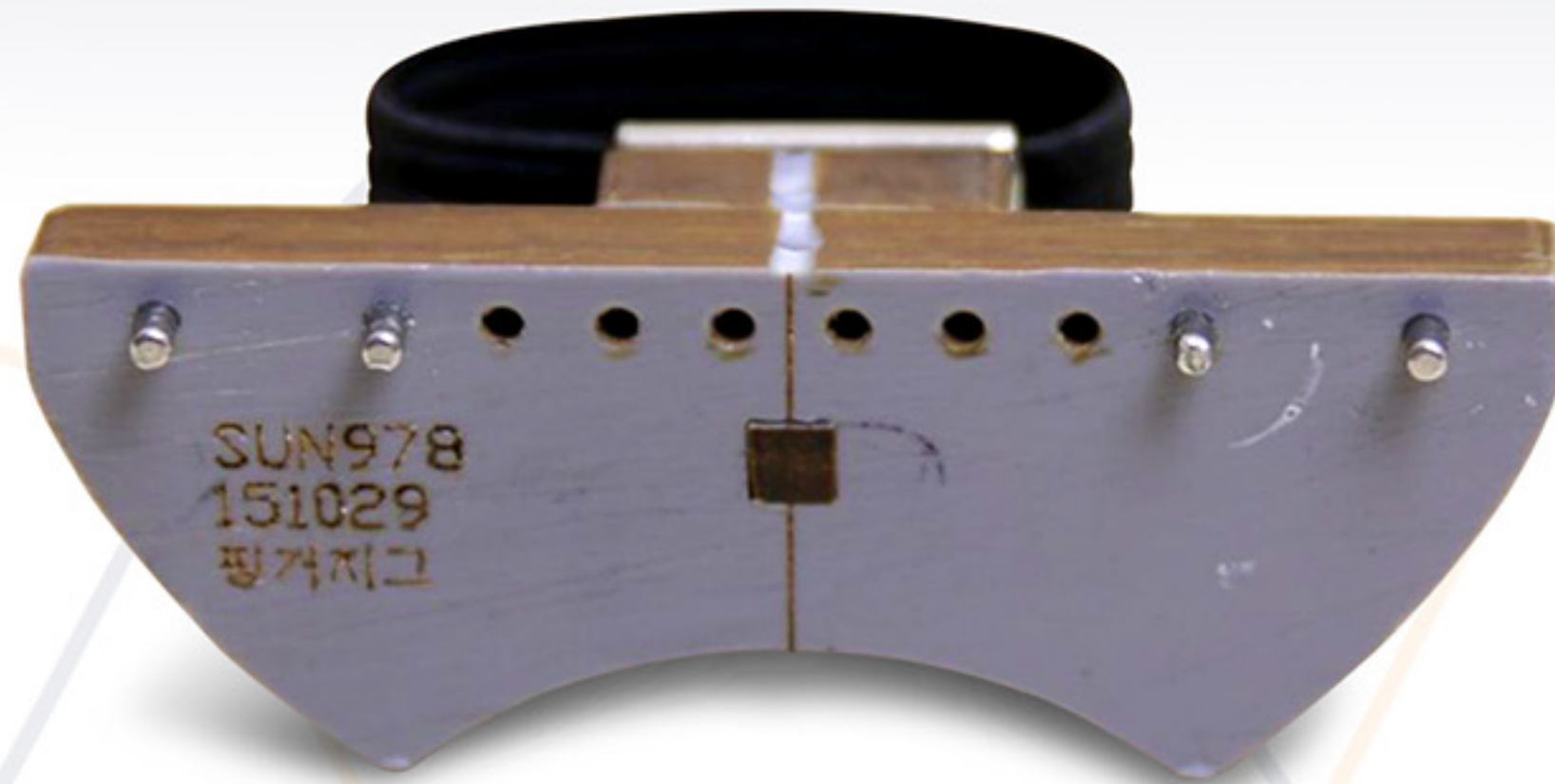
[Cutting Jig Blade SCJ-132 Top]

The background is a solid blue color with a white, intricate circuit board pattern overlaid. The pattern consists of numerous thin, white lines that form a complex network of paths, resembling a printed circuit board (PCB) layout. These lines are interconnected, with some forming straight paths and others branching out or curving. The overall effect is a technical, digital aesthetic.

JIGS

FINGER JIG

Descriptions	Specification	Model No.
Finger Jig	for 8,12,16,24mm(EMBOSED,PAPER), for Splice Tape	FJS-200



➔ APPLICATION Able to splice



FEATURES

- ✓ Fast
- ✓ Accurate
- ✓ Easy
- ✓ **Material:** PVC+RUBBER BAND

PLATE JIG

Descriptions	Specification	Model No.
Plate Jig for Splice Tape	FOR 12MM,16MM, 24MM(EMBOSSED,PAPER)	PJS-218



➔ APPLICATION Table splicing



FEATURES

- ✓ Easy to splice
- ✓ Slice Jig for all size Paper and embossed carrier tape
- ✓ Thickness: 18mm

PLATE JIG ADJUSTABLE

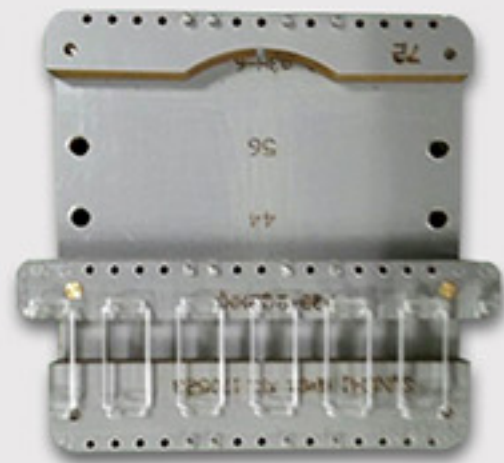
Descriptions	Specification	Model No.
Plate Jig for Carrier Tape	FOR 8~72mm Adjustable	MJ-172



[Fixed Plate]



[Adjustable Plate]



[32mm Carrier Tape]



[44mm Carrier Tape]



[56mm Carrier Tape]

REMOVAL TAPES

REMOVER TAPE (PEEL OFF TAPE)

Descriptions	Specification	Model No.
Peel Off Tape as watch type	Tape with Case/120EA+Band 8mmx30mm	PTW-120B/SPOT-0830



➔ APPLICATION Peel Off Cover Tape



FEATURES

- ✓ Best to use with carrier tape and cover tape
- ✓ MODEL NO: SPOT-120
- ✓ Material: PET
- ✓ Q'ty: 120EA
- ✓ Option: Band

REMOVER TAPE (PEEL OFF TAPE)

Descriptions	Specification	Model No.
TAPE REMOVER	Superior Peel Off Tape/8mmx23mm/Yellow/120EA	SPOT-120/SPOT-0823



➔ **APPLICATION** Remove the film or protective film



FEATURES

- ✓ Use to remove protective film by pulling out to remove the tape by ease
- ✓ **MODEL NO:** SPOT-1000
- ✓ **Material:** PET
- ✓ **Q'ty:** 120EA
- ✓ **Option:** Band

REMOVER TAPE (PEEL OFF TAPE)

Descriptions	Specification	Model No.
TAPE REMOVER	Superior Peel Off Tape/8mmx23mm/Yellow/1000EA	SPOT-1000



➔ APPLICATION Remove Vinyl in the glass



FEATURES

- ✓ Removeable vinyl
- ✓ MODEL NO: SPOT-1000
- ✓ Material: PET
- ✓ Q'ty: 1000EA

REMOVER TAPE (PEEL OFF TAPE)

Descriptions	Specification	Model No.
TAPE REMOVER	Superior Peel Off Tape/10mmx32mm/Green/600EA	SPOT-1032



➔ APPLICATION Remove Vinyl in the glass



FEATURES

- ✓ Can use a few times
- ✓ Removeable vinyl
- ✓ MODEL NO: SPOT-1032
- ✓ Material: PET
- ✓ Q'ty: 600EA

The background is a solid blue color with a white, intricate circuit board pattern overlaid. The pattern consists of various lines, curves, and small circles, resembling a complex electronic circuit. The text "FIXED TAPE" is centered in the middle of the image in a bold, white, sans-serif font.

FIXED TAPE

FIXED TAPE

Descriptions	Specification	Model No.
FIXED TAPE	For Carrier Cover Tape	FTF-500T



➔ APPLICATION Carrier tapes



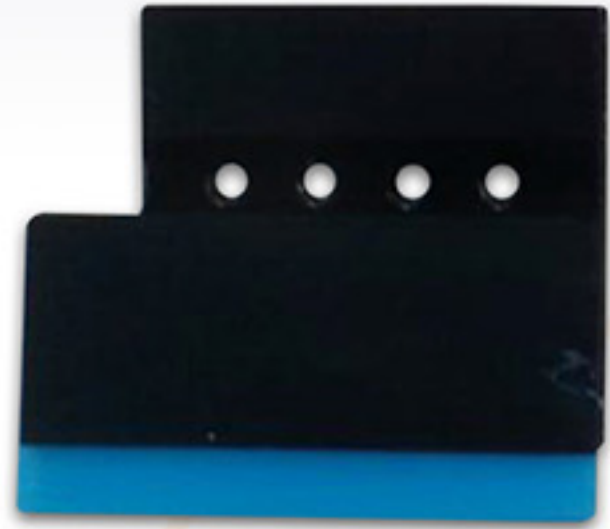
FEATURES

- ✓ Easy, Convenient, Fast splicing
- ✓ No splicing error
- ✓ Straight Cutting
- ✓ Material: PET

FIX TAPE FTC-100

Descriptions	Specification	Model No.
FIX TAPE FOR CUTTING JIG	Only for Embossed Carrier Tapes(L/R)	FTC-100

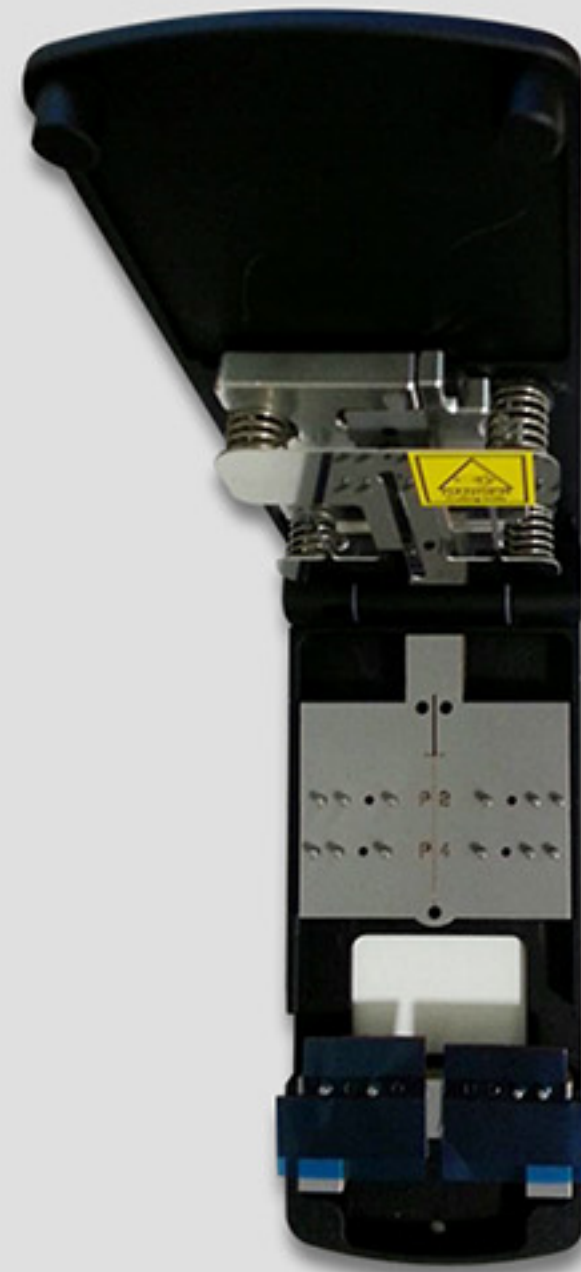
[Before Separation]



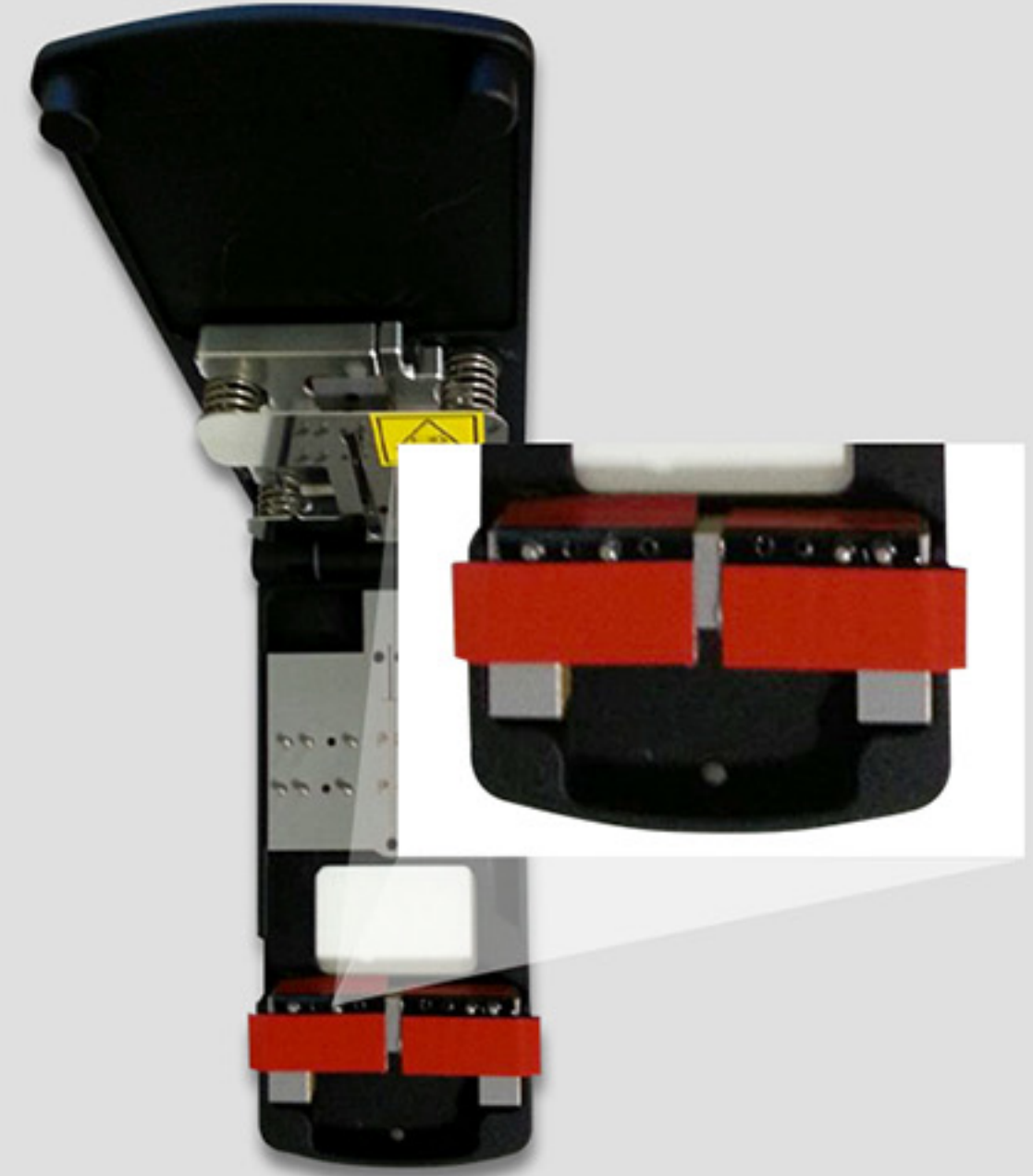
[After Separation]



[DOUBLE SPLICE TAPE FTC-100]



Peel Off Bottom Release Paper



Peel Off Top Release Paper

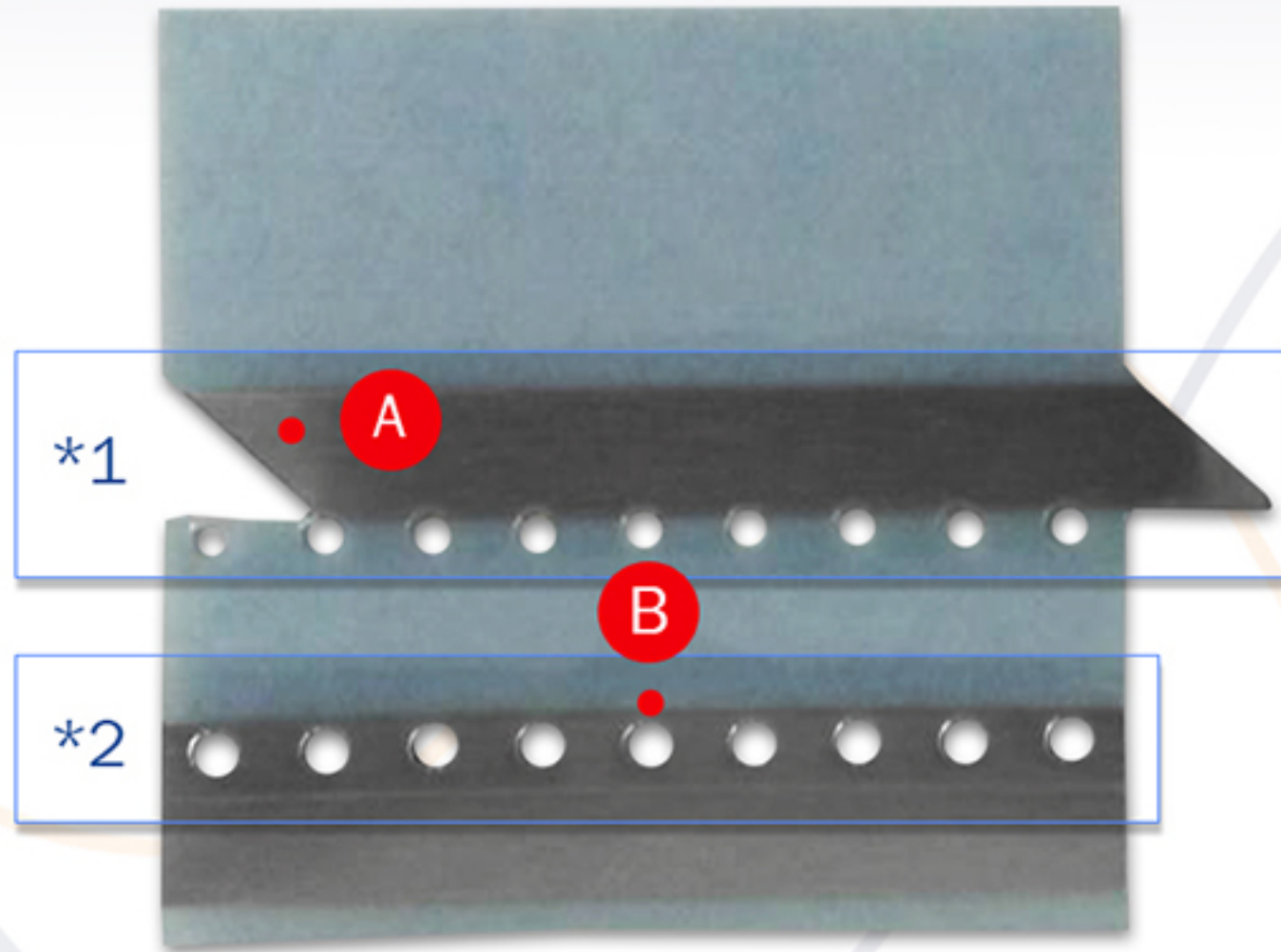
SR/BSE SPLICE TAPE

FUJI/ASM(SIEMESN) Mounter Detection

DOUBLE SPLICE TAPE 8MM

DOUBLE SPLICE TAPE | ESD SAFE POSSIBLE | FEEDING HOLE TAPE-BOTTOM | SILVER COLOR | DETECTION POSSIBLE

Descriptions	Specification	Model No.
Double Splice Tape(8mm)	Sensing Tape/Silver/Fuji Mounter/Hole Tape	SCJ-108N



*1: Top cover tape side

*2: Bottom cover tape side

A Diagonal Cutting: Easy detaching

B Hole Tape: for replacing clip, no splice clip needed

→ **DETECTION MOUNTER** ASM(SIEMENS) FUJI

→ **MATERIAL** Conductive, ESD / Strong Adhesion / Cover Tape: AL / Bottom: AL



- ✓ Special diagonal cutting (Less Jamming)
- ✓ Holes for Pins(Feeding Hole) Bottom & Top
- ✓ 2 Row
- ✓ Feeding Hole
- ✓ Easy to use by beginner and eliminates human errors
- ✓ Compatible with splicing
- ✓ No splice clip needed

- Detection
- Feeding hole
- ESD soft

DOUBLE SPLICE TAPE 8MM

DOUBLE SPLICE TAPE | ESD SAFE POSSIBLE | FEEDING HOLE TAPE-BOTTOM | SILVER COLOR | DETECTION POSSIBLE

Descriptions	Specification	Model No.
Double Splice Tape(8mm)	Sensing Tape/Silver/Fuji Mounter/Hole Tape	SR-108

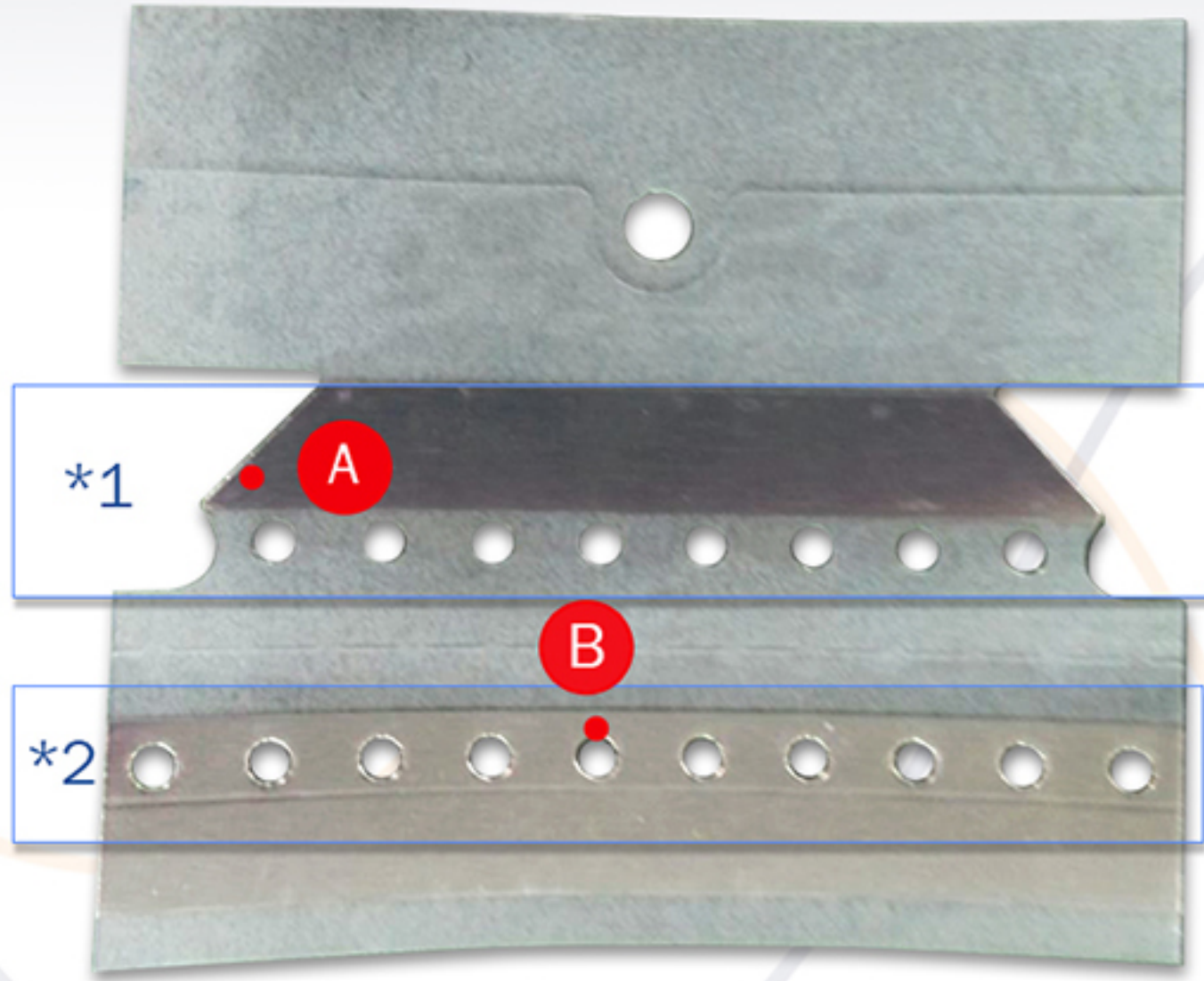
→ **DETECTION MOUNTER** ASM(SIEMENS) FUJI

→ **MATERIAL** Conductive, ESD / Strong Adhesion / Cover Tape: AL / Bottom: AL



- ✓ Special diagonal cutting (Less Jamming)
- ✓ Holes for Pins(Feeding Hole) Bottom & Top
- ✓ 2 Row
- ✓ Feeding Hole
- ✓ Easy to use by beginner and eliminates human errors
- ✓ Compatible with splicing
- ✓ No splice clip needed

- Detection
- Feeding hole
- ESD soft



*1: Top cover tape side

*2: Bottom cover tape side

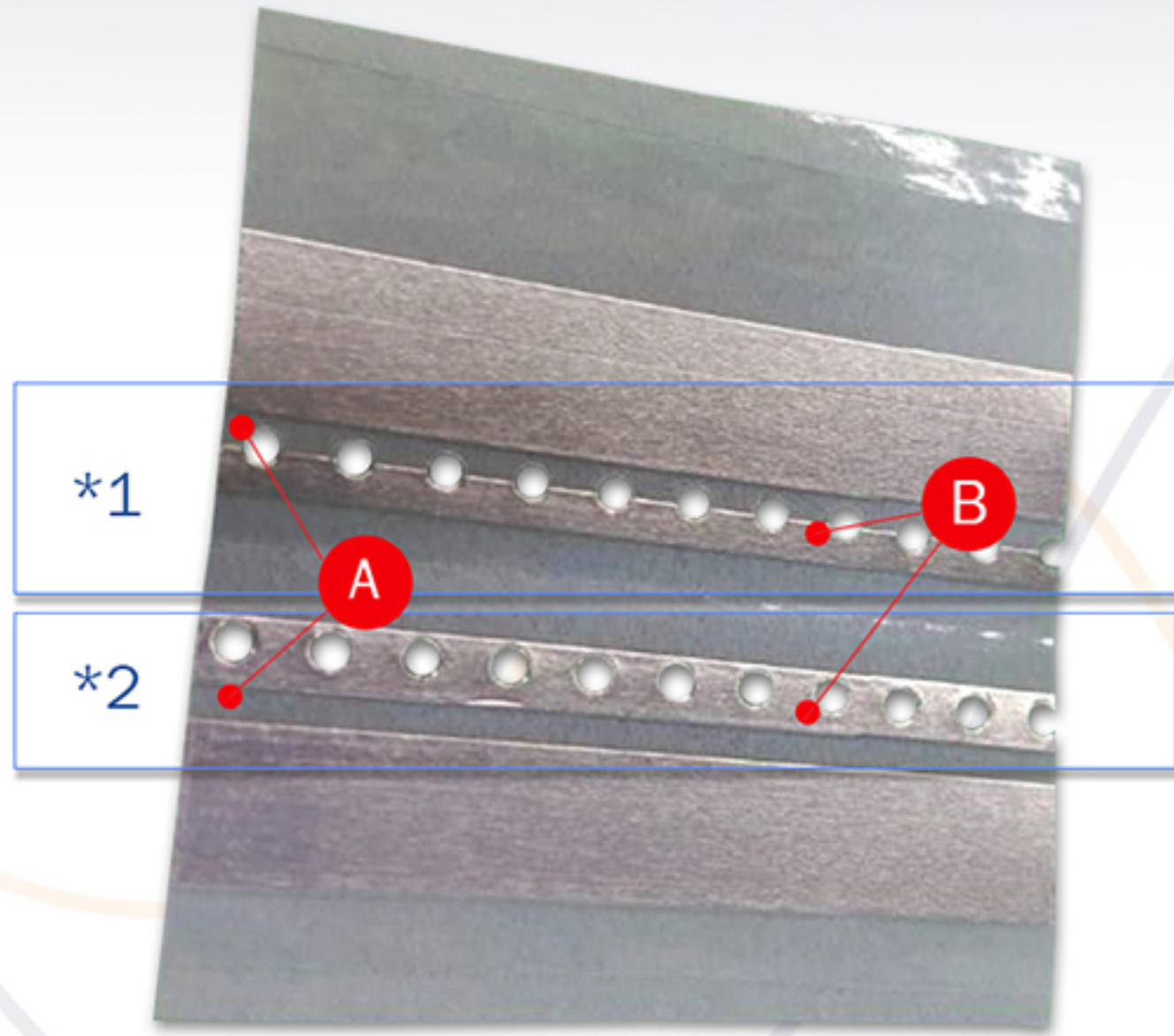
A Diagonal Cutting: Easy detaching

B Hole Tape: for replacing clip, no splice clip needed

DOUBLE SPLICE TAPE 12MM

DOUBLE SPLICE TAPE | ESD SAFE POSSIBLE | FEEDING HOLE TAPE-BOTTOM | SILVER COLOR | DETECTION POSSIBLE

Descriptions	Specification	Model No.
Double Splice Tape	Silver Sensing, 12mm	BSE-112N4



*1: Top cover tape side : Half Circle

*2: Bottom cover tape side : Full Circle

→ DETECTION MOUNTER FUJI SIEMENS(ASM)

→ MATERIAL Conductive Splicing Tap / Strong Adhesion / Cover Tape:AL/
Bottom:AL



- ✓ 4 row for decreasing jamming (specially for embossed reel)
- ✓ Finger Jig Use
- ✓ Easy to use by beginner
- ✓ Decrease splicing error
- ✓ No need splice clip (Including embossed reel)
- ✓ Feeding Hole

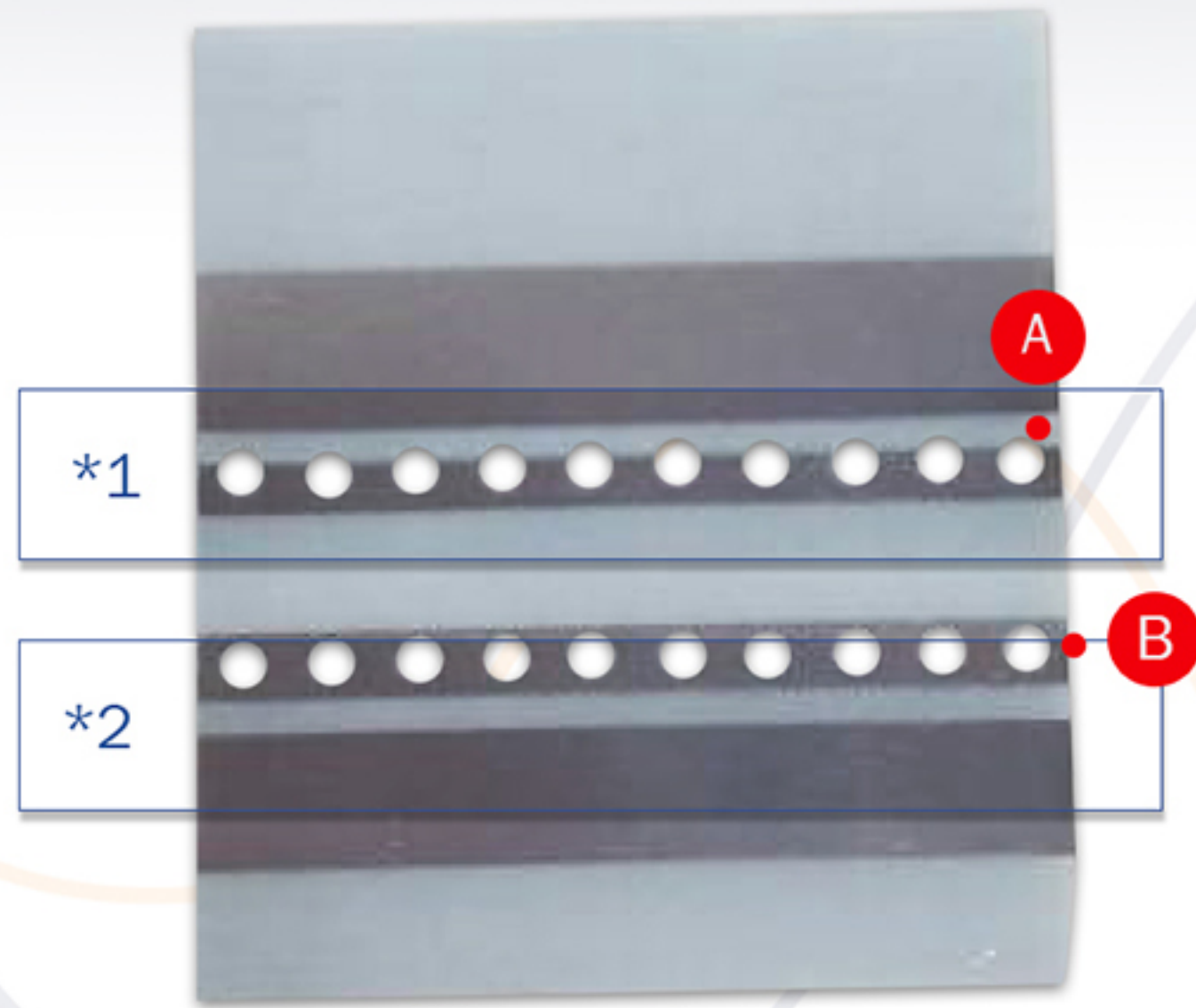
A Space: For protecting splicing errors by pocket. No Jamming

B Feeding Hole Tape: Strong carrier tape connection. No splice clip needed and no jamming

DOUBLE SPLICE TAPE 16MM

DOUBLE SPLICE TAPE | ESD SAFE POSSIBLE | FEEDING HOLE TAPE-BOTTOM | SILVER COLOR | DETECTION POSSIBLE

Descriptions	Specification	Model No.
Double Splice Tape	Silver Sensing, 16mm	BSE-116N4



*1: Top cover tape side : Half Circle

*2: Bottom cover tape side : Full Circle

→ DETECTION MOUNTER ASM(SIEMENS) FUJI

→ MATERIAL Conductive, ESD / Strong Adhesion / Cover Tape: AL / Bottom: AL



- ✓ 4 row for decreasing jamming (specially for embossed reel)
- ✓ Finger Jig Use
- ✓ Easy to use by beginner
- ✓ Decrease splicing error
- ✓ No need splice clip (Including embossed reel)
- ✓ Feeding Hole

A Space: For protecting splicing errors by pocket.

B Feeding Hole Tape: Strong carrier tape connection. No splice clip needed and no jamming

- Detection

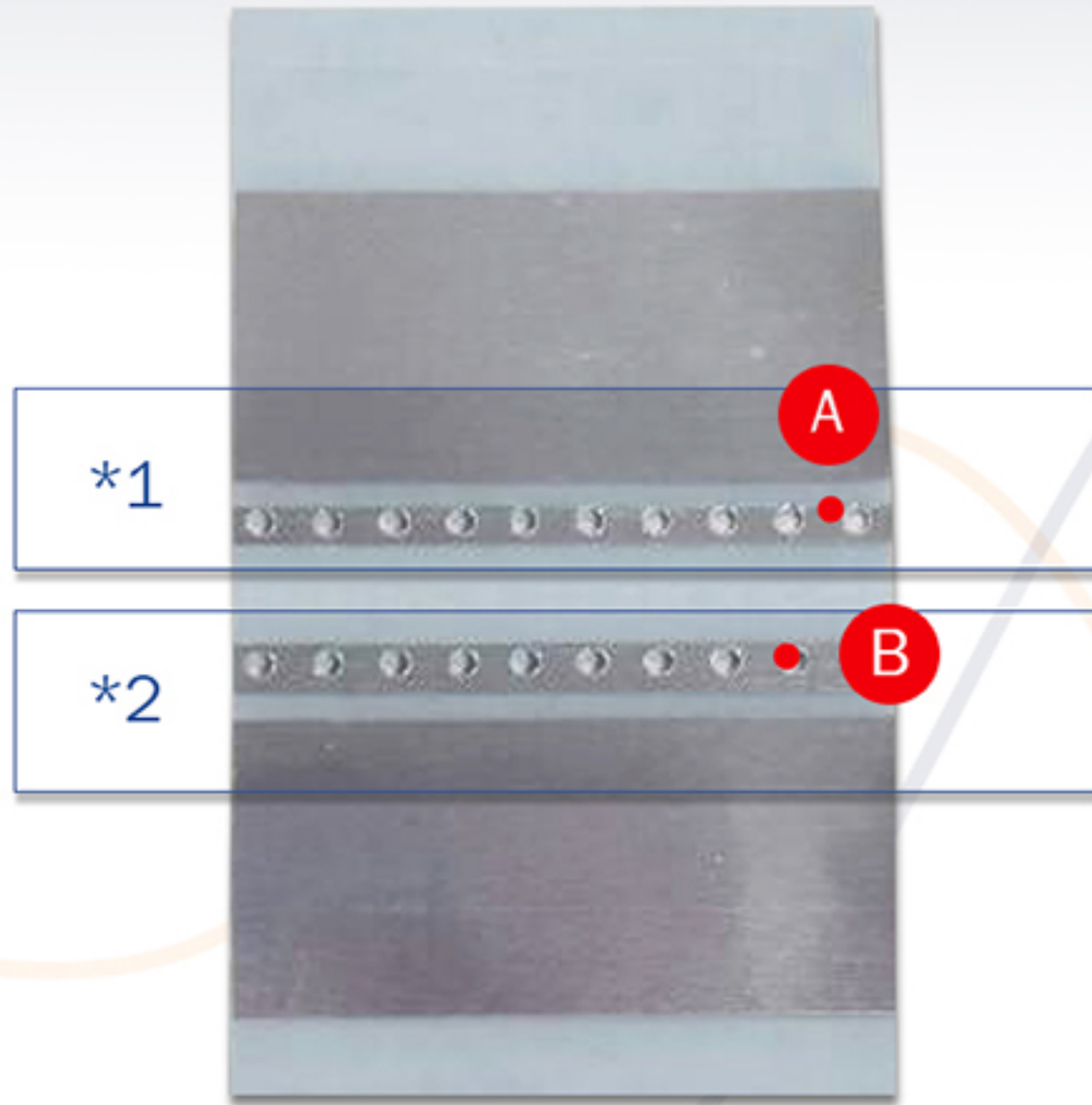
- Feeding hole

- ESD soft

DOUBLE SPLICE TAPE 24MM

DOUBLE SPLICE TAPE | ESD SAFE POSSIBLE | FEEDING HOLE TAPE-BOTTOM | SILVER COLOR | DETECTION POSSIBLE

Descriptions	Specification	Model No.
Double Splice Tape	Silver Sensing, 24mm	BSE-116N4



*1: Top cover tape side : Half Circle

*2: Bottom cover tape side : Full Circle

→ DETECTION MOUNTER FUJI SIEMENS(ASM)

→ MATERIAL Conductive Splicing Tap / Strong Adhesion / Cover Tape: AL / Bottom: AL



- ✓ 4 row for decreasing jamming (specially for embossed reel)
- ✓ Finger Jig Use
- ✓ Easy to use by beginner
- ✓ Decrease splicing error
- ✓ No need splice clip (Including embossed reel)
- ✓ Feeding Hole

A Space: For protecting splicing errors by pocket.

B Feeding Hole Tape: Strong carrier tape connection. No splice clip needed and no jamming

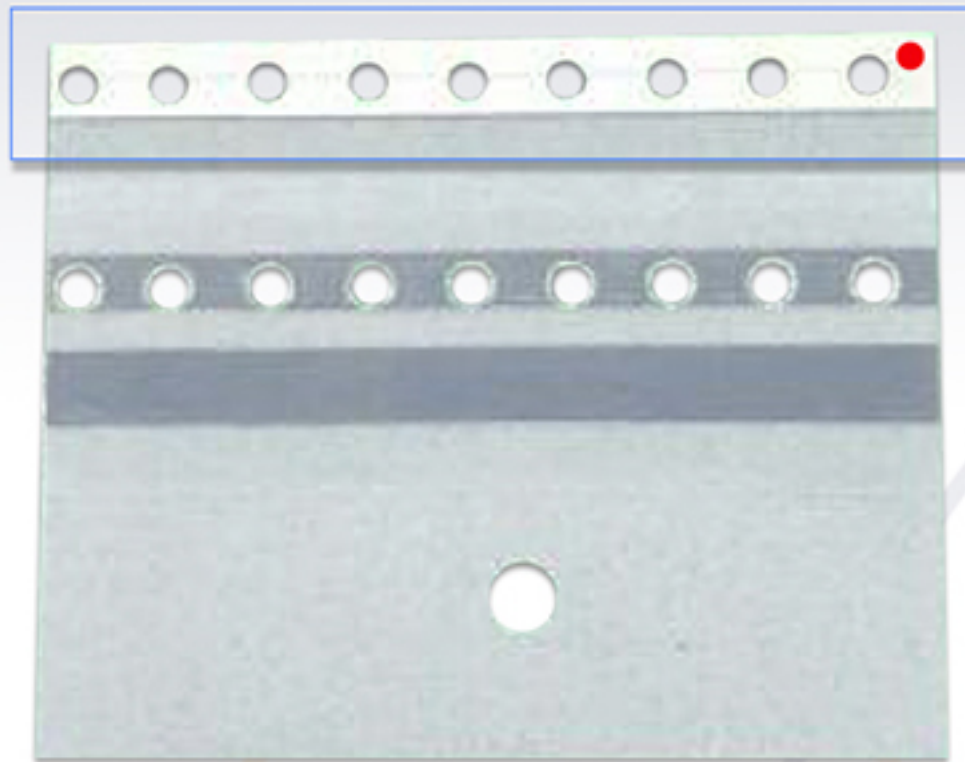
EMB SPLICE TAPE

FUJI/ASM(SIEMESN) Mounter Detection

EMB SPLICE TAPE EMB

EDM | ESD SAFE POSSIBLE | FEEDING HOLE TAPE-BOTTOM/TOP(SINGLE) | SILVER COLOR | DETECTION POSSIBLE

[EMB-108]

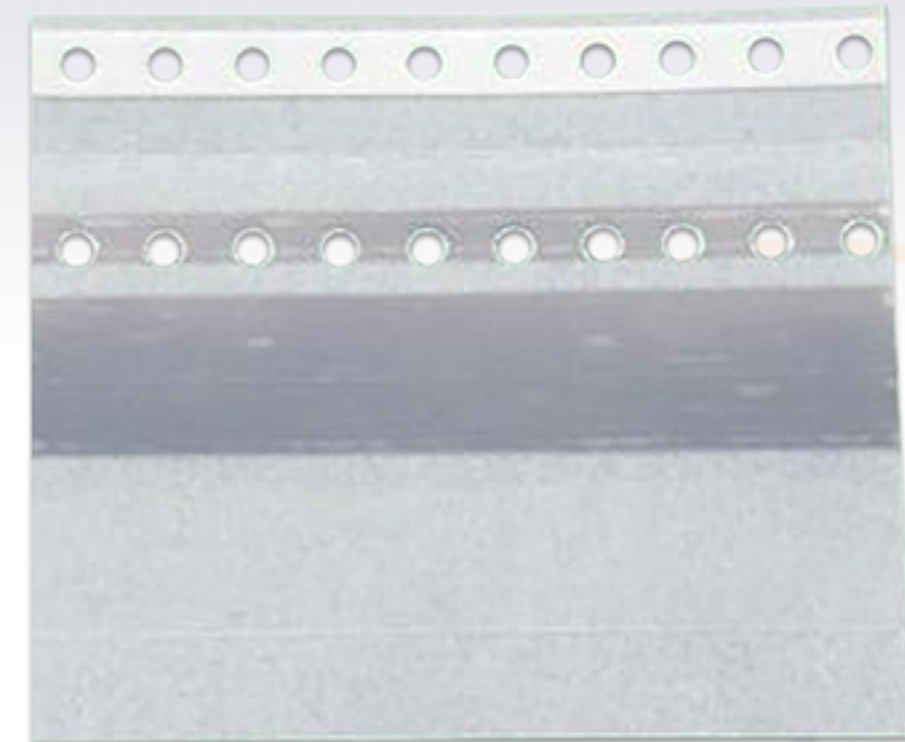


Special Tape Applied

→ DETECTION FUJI, SIEMENS MOUNTNER

→ APPLICATION Embossed Carrier Tape 8mm

[EMB-112]



→ DETECTION FUJI, SIEMENS MOUNTNER

→ APPLICATION Embossed Carrier Tape 12mm



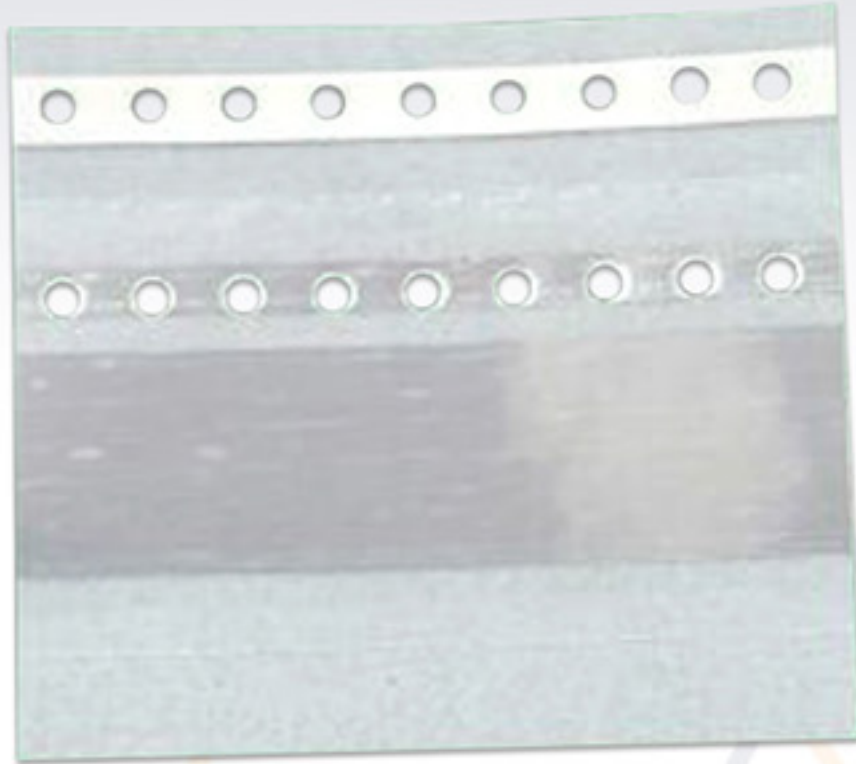
FEATURES

- ✓ Embosses carrier tape splice
- ✓ Special Tape in the feeding Hole
- ✓ No special clips required with special tape
- ✓ Can be detect in SIEMENS/ASM, FUSI MOUNTER

EMB SPLICE TAPE EMB

EDM | ESD SAFE POSSIBLE | FEEDING HOLE TAPE-BOTTOM/TOP(SINGLE) | SILVER COLOR | DETECTION POSSIBLE

[EMB-116]



- ➔ DETECTION FUJI,SIEMENS MOUTNER
- ➔ APPLICATION Embossed Carrier Tape 16mm

[EMB-124]



- ➔ DETECTION FUJI,SIEMENS MOUTNER
- ➔ APPLICATION Embossed Carrier Tape 24mm



FEATURES

- ✓ Embosses carrier tape splice
- ✓ Special Tape in the feeding Hole
- ✓ No special clips required with special tape
- ✓ Can be detect in SIEMENS/ASM, FUSI MOUNTER

EMB SPLICE TAPE EMB

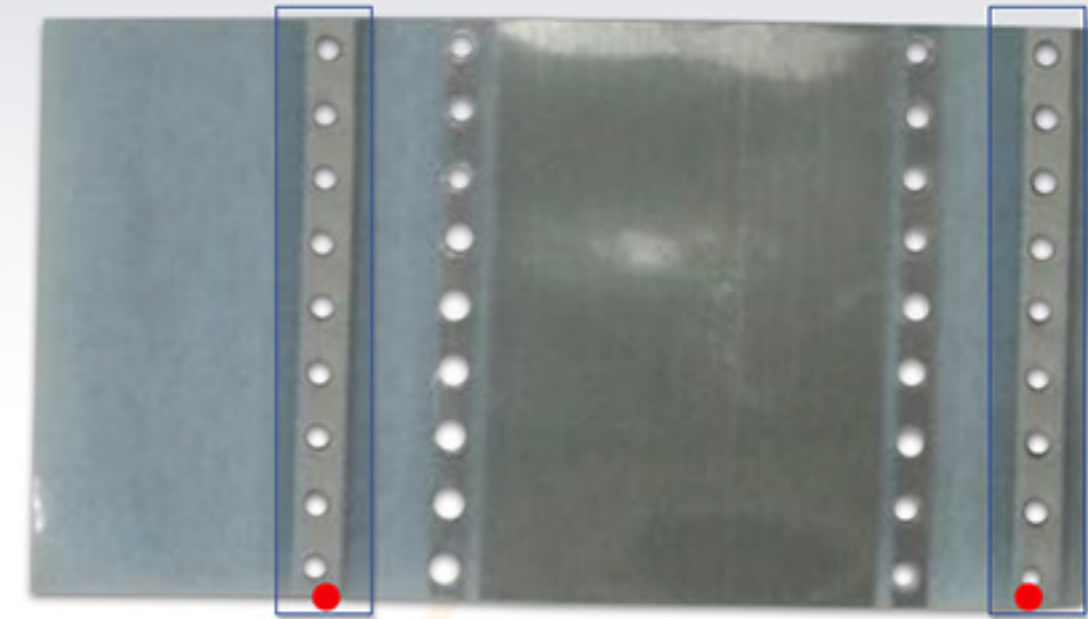
EDM | ESD SAFE POSSIBLE | FEEDING HOLE TAPE-BOTTOM/TOP(SINGLE) | SILVER COLOR | DETECTION POSSIBLE

[EMB-132]



- ➔ DETECTION FUJI,SIEMENS MOUTNER
- ➔ APPLICATION Embossed Carrier Tape 32mm

[EMB-132 DH, 144 DH, 156 DH, 172 DH]



Special Tape Applied

Special Tape Applied

- ➔ DETECTION FUJI,SIEMENS MOUTNER
- ➔ APPLICATION Embossed Carrier Tape 8mm



FEATURES

- ✓ Embosses carrier tape splice
- ✓ Special Tape in the feeding Hole
- ✓ No special clips required with special tape
- ✓ Can be detect in SIEMENS/ASM, FUSI MOUNTER
- ✓ Top/ Bottom splice tape apply

EMB SPLICE TAPE EMB

EDM | ESD SAFE POSSIBLE | FEEDING HOLE TAPE-BOTTOM/TOP(SINGLE) | SILVER COLOR | DETECTION POSSIBLE

[EMB-144]



- ➔ DETECTION FUJI,SIEMENS MOUTNER
- ➔ APPLICATION Embossed Carrier Tape 44mm

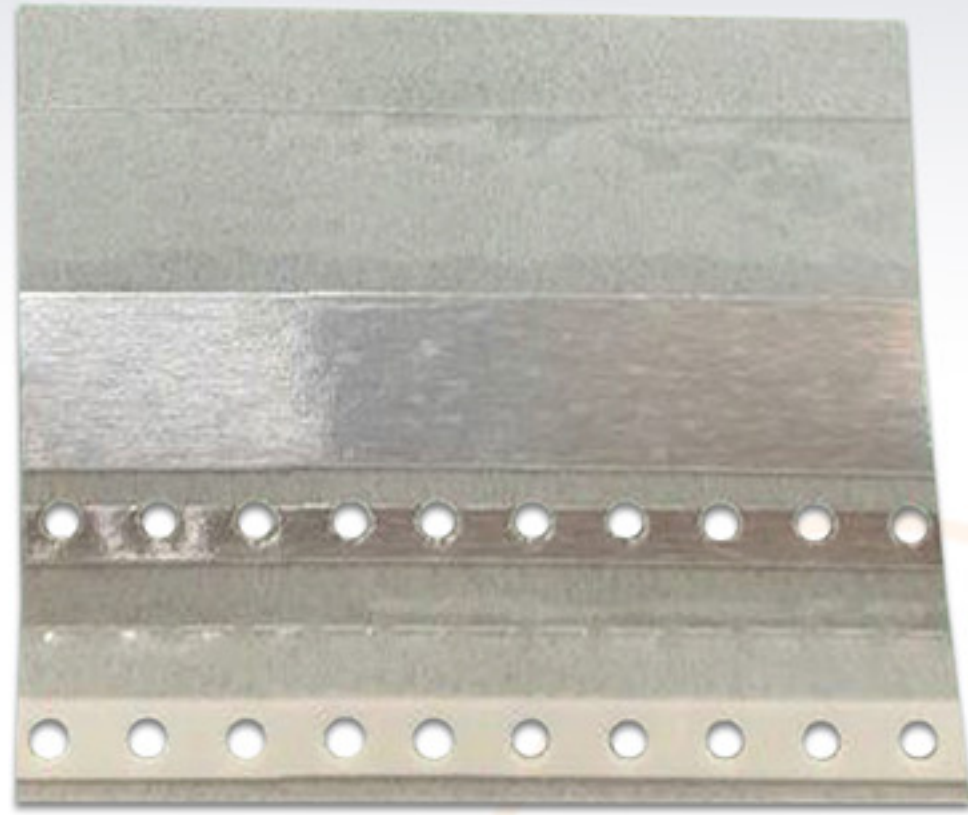
[EMB-156]



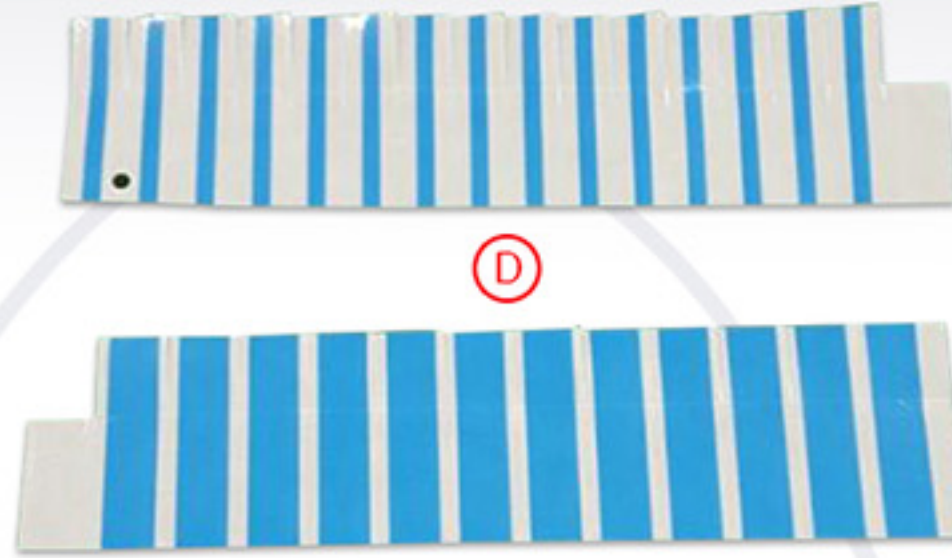
- ➔ DETECTION FUJI,SIEMENS MOUTNER
- ➔ APPLICATION Embossed Carrier Tape 56mm

EMB/EMS SPLICE TAPE

[EMB TAPE EMB-108/112]



[EMS TAPE EMS-103/108]



[COVER TAPE]

Top



Bottom



Can do splice without splice clip for embossed carrier tape

- A** Special tape for feeding hole
- D** EMB tape

Can do splice single splice tape in the CAP

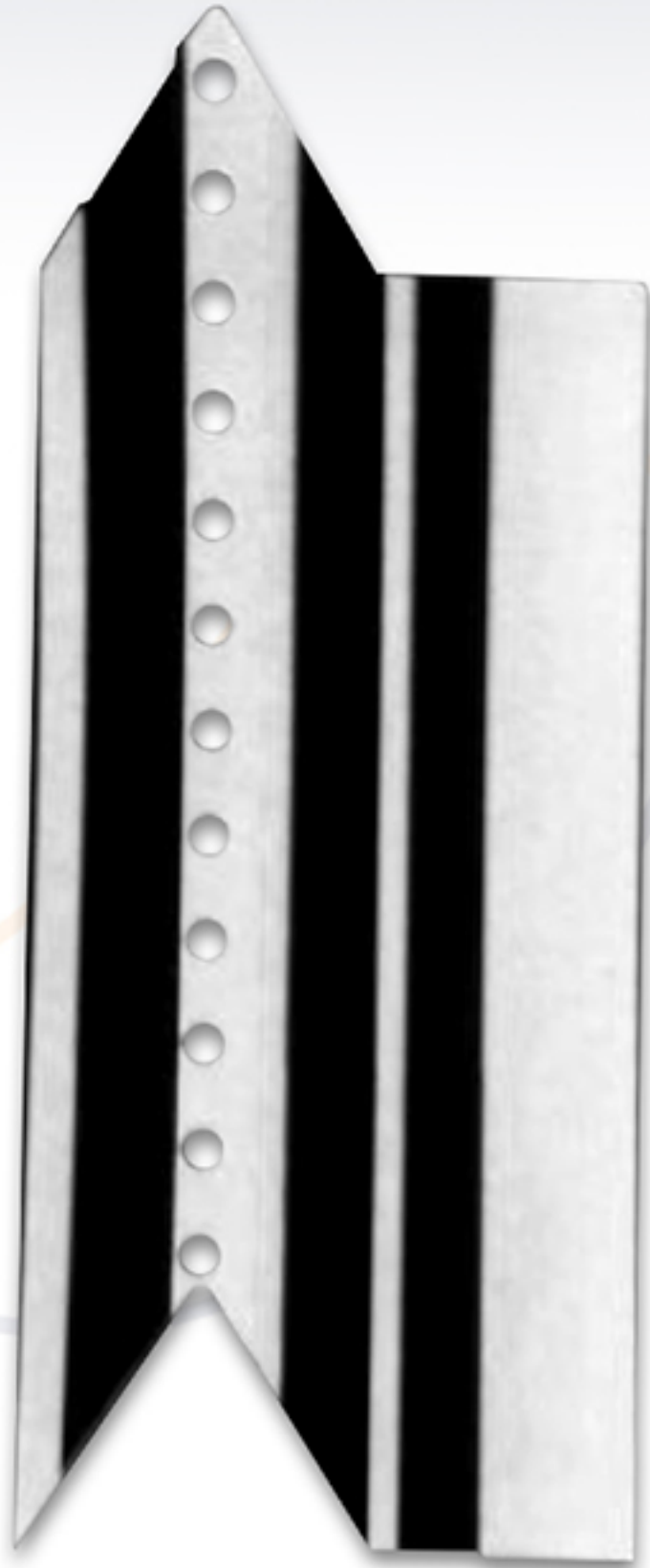
- A** Bottom
- B** **C** Top feeding hole & cover tape
- D** EMS tape (single splice tape)

SRP SPLICE TAPE

Panasonic Mounter Detection

DOUBLE SPLICE TAPE

Descriptions	Specification	Model No.
Double Splice Tape(8mm)	For Paper/Embossed Carrier Tapes	SRP-108



→ **DETECTION MOUNTER** Panasonic

→ **MATERIAL** Strong Adhesion / Cover Tape: PET / Bottom: PET

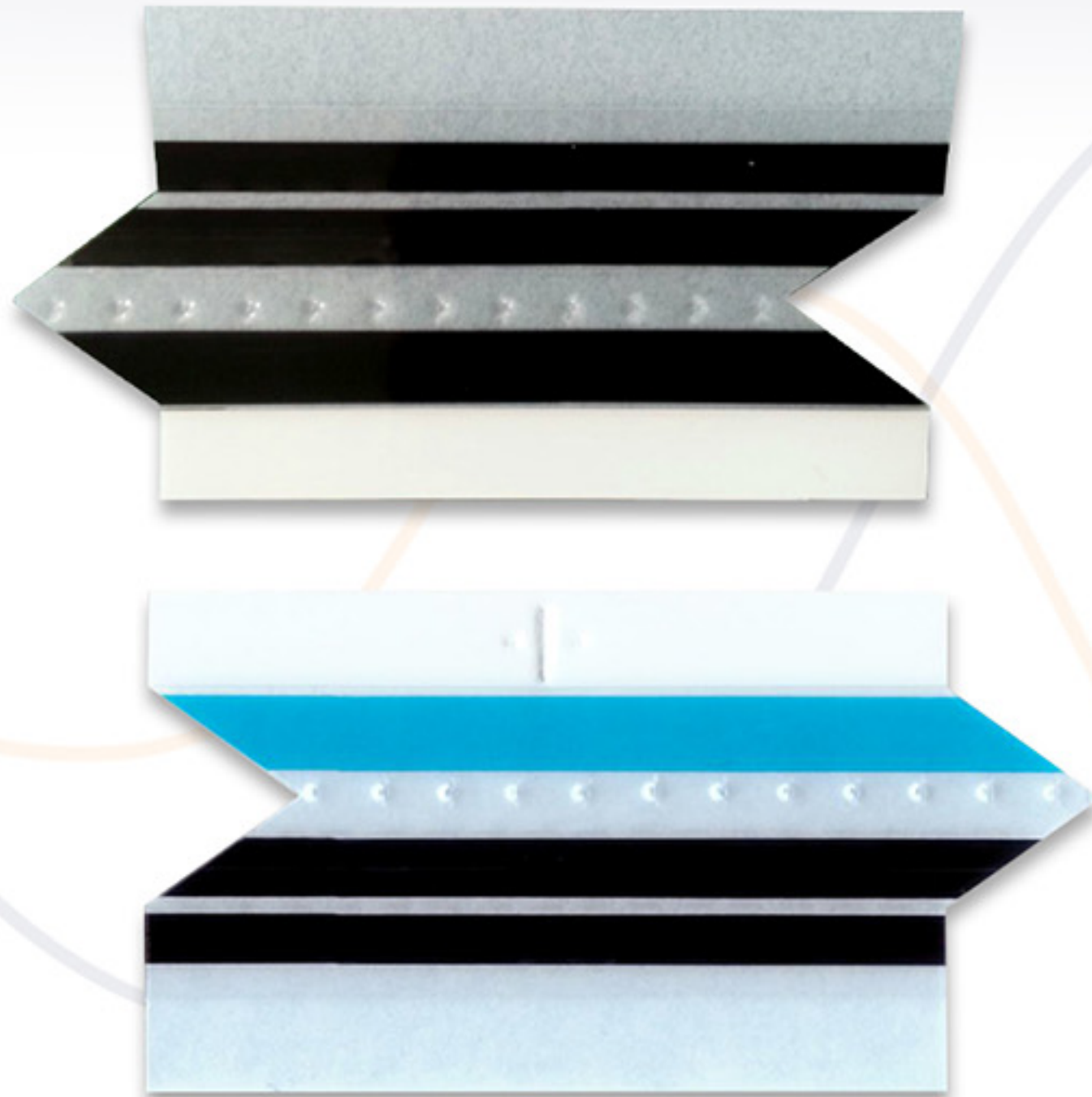


- ✓ Special Cutting with Diagonal (Less Jamming)
- ✓ Holes for Pins (Feeding Hole) Bottom & Top
- ✓ Easy to use by beginner and eliminates human error
- ✓ Compatible with splicing jig

- Detection
- Feeding hole
- ESD saft

DOUBLE SPLICE TAPE

Descriptions	Specification	Model No.
Double Splice Tape(8mm)	Guide Type	SRP-108G



→ **DETECTION MOUNTER** Panasonic

→ **MATERIAL** Strong Adhesion / Cover Tape: PET / Bottom: PET



- ✓ Special Cutting with Diagonal (Less Jamming)
- ✓ Holes for Pins (Feeding Hole) Bottom & Top
- ✓ Easy to use by beginner and eliminates human error
- ✓ Compatible with splicing jig

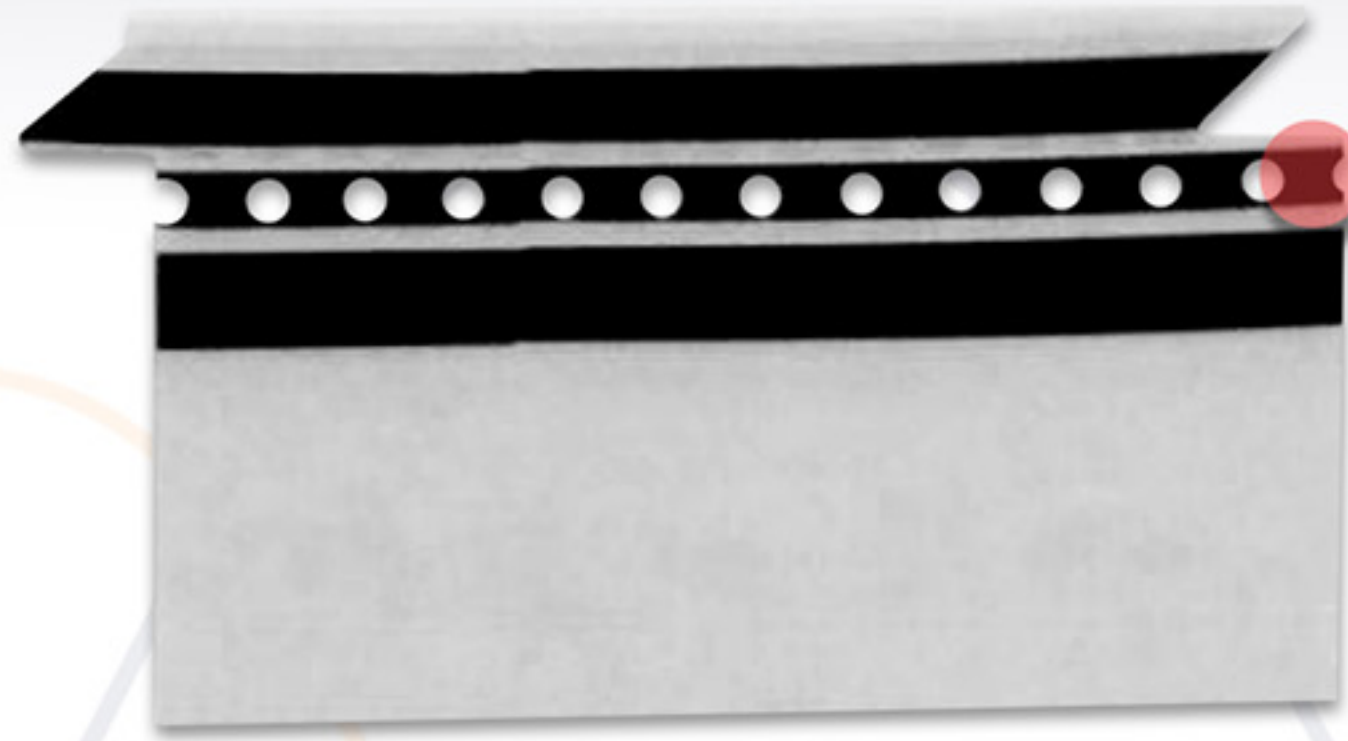
- Detection
- Feeding hole
- ESD saft

EMB SPLICE TAPE

Panasonic Mounter Detection

DOUBLE SPLICE TAPE

Descriptions	Specification	Model No.
Double Splice Tape(8mm)	For Paper/embossed Carrier Tapes	EMB-108P



No special clips required
with special tape

➔ **DETECTION MOUNTER** Panasonic Mounter
Detection Tape

➔ **MATERIAL** Strong Adhesion / Cover Tape: PET /
Bottom: PET

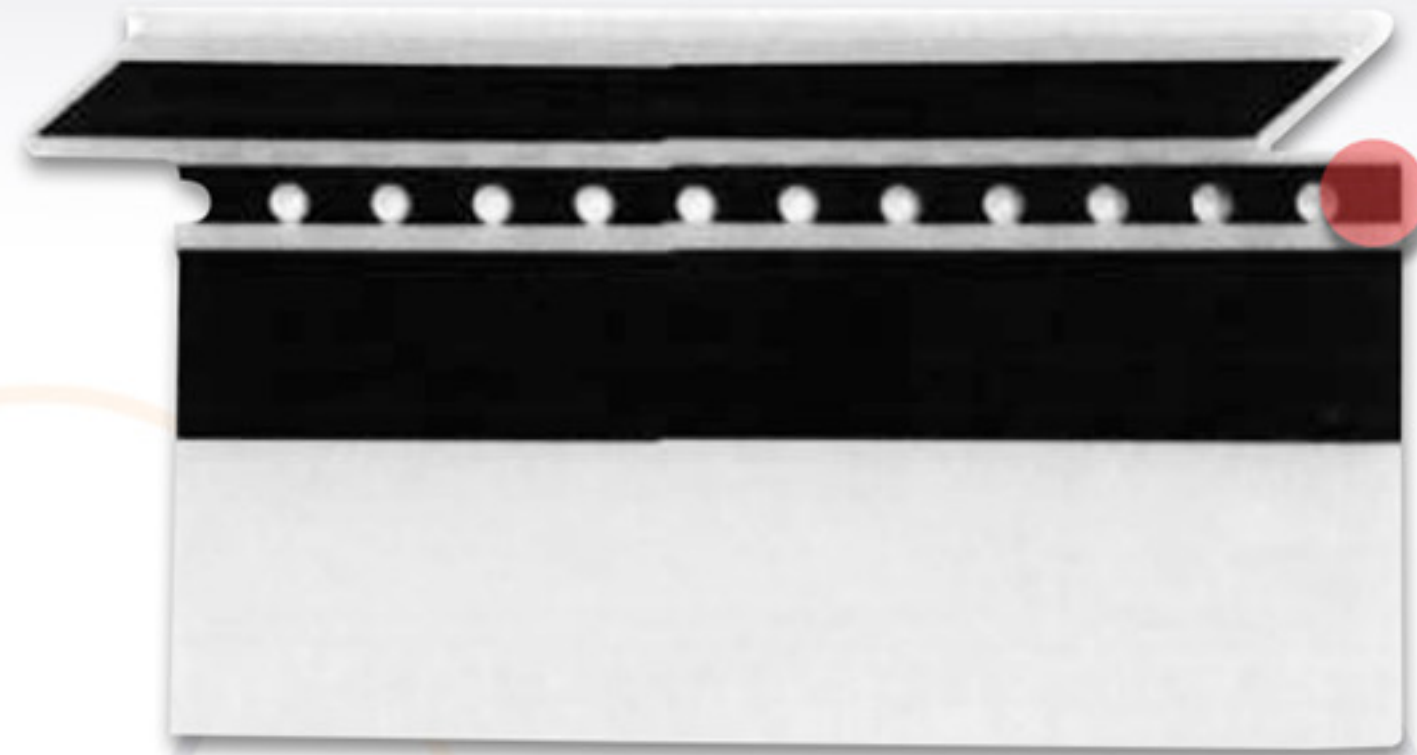
- Detection
- Feeding hole
- ESD soft

FEATURES

- ✓ Special Cutting with Diagonal (Less Jamming)
- ✓ Holes for Pins (Feeding Hole) Bottom & Top
- ✓ Easy to use by beginner and eliminates human error
- ✓ Compatible with splicing jig
- ✓ No splice clip needed

DOUBLE SPLICE TAPE

Descriptions	Specification	Model No.
Double Splice Tape(12mm)	For embossed Carrier Tapes	EMB-112P



No special clips required with special tape

➔ **DETECTION MOUNTER** Panasonic Mounter Detection Tape

➔ **MATERIAL** Strong Adhesion / Cover Tape: PET / Bottom: PET

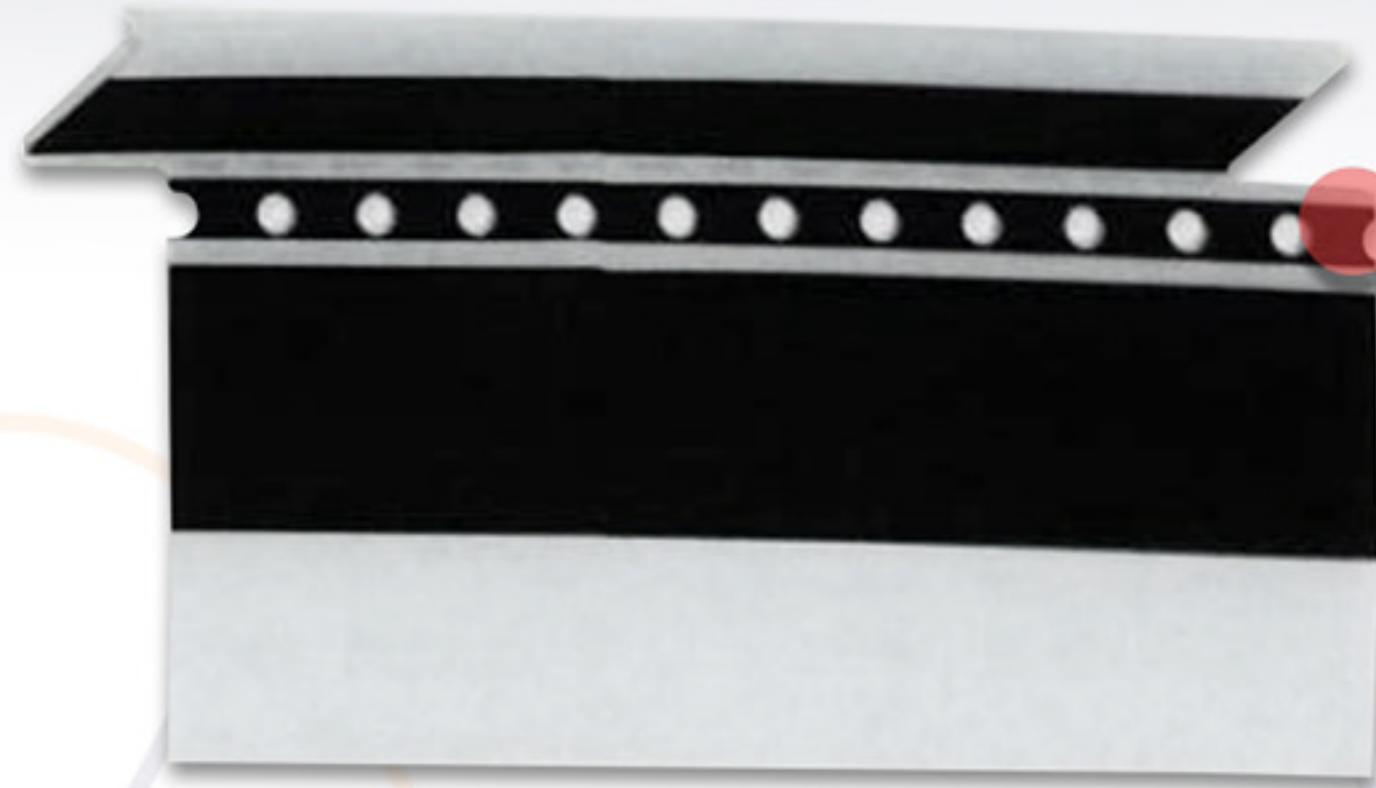
- Detection
- Feeding hole
- ESD soft

FEATURES

- ✓ Special Cutting with Diagonal (Less Jamming)
- ✓ Holes for Pins (Feeding Hole) Bottom & Top
- ✓ Easy to use by beginner and eliminates human error
- ✓ Compatible with splicing jig
- ✓ No splice clip needed

DOUBLE SPLICE TAPE

Descriptions	Specification	Model No.
Double Splice Tape(16mm)	For embossed Carrier Tapes	EMB-116P



No special clips required
with special tape

➔ **DETECTION MOUNTER** Panasonic Mounter
Detection Tape

➔ **MATERIAL** Strong Adhesion / Cover Tape: PET /
Bottom: PET

- Detection
- Feeding hole
- ESD soft

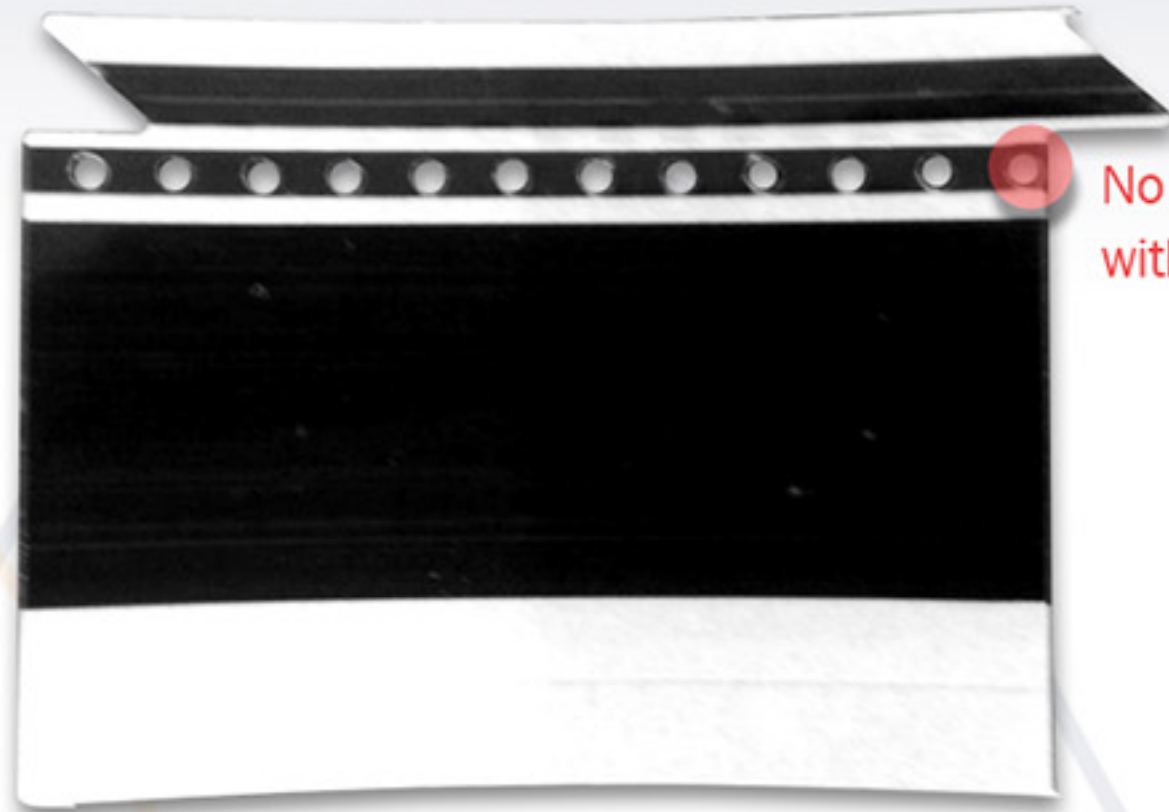


FEATURES

- ✓ Special Cutting with Diagonal (Less Jamming)
- ✓ Holes for Pins (Feeding Hole) Bottom & Top
- ✓ Easy to use by beginner and eliminates human error
- ✓ Compatible with splicing jig
- ✓ No splice clip needed

DOUBLE SPLICE TAPE

Descriptions	Specification	Model No.
Double Splice Tape(24mm)	For embossed Carrier Tapes	EMB-124P



No special clips required
with special tape

➔ **DETECTION MOUNTER** Panasonic Mounter
Detection Tape

➔ **MATERIAL** Strong Adhesion / Cover Tape: PET /
Bottom: PET

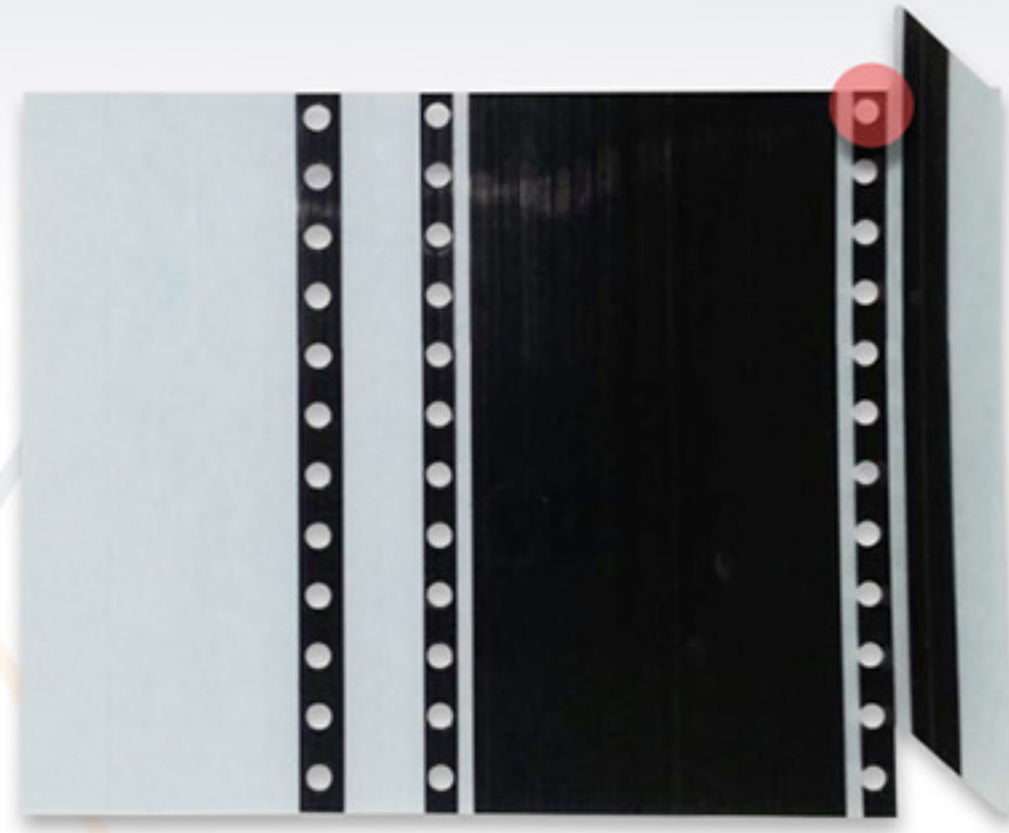
- Detection
- Feeding hole
- ESD soft


FEATURES

- ✓ Special Cutting with Diagonal (Less Jamming)
- ✓ Holes for Pins (Feeding Hole) Bottom & Top
- ✓ Easy to use by beginner and eliminates human error
- ✓ Compatible with splicing jig
- ✓ No splice clip needed

DOUBLE SPLICE TAPE

Descriptions	Specification	Model No.
Double Splice Tape(32mm)	For embossed Carrier Tapes	EMB-132P DH



No special clips required
with special tape

➔ **DETECTION MOUNTER** Panasonic Mounter
Detection Tape

➔ **MATERIAL** Strong Adhesion / Cover Tape: PET /
Bottom: PET

- Detection
- Feeding hole
- ESD soft

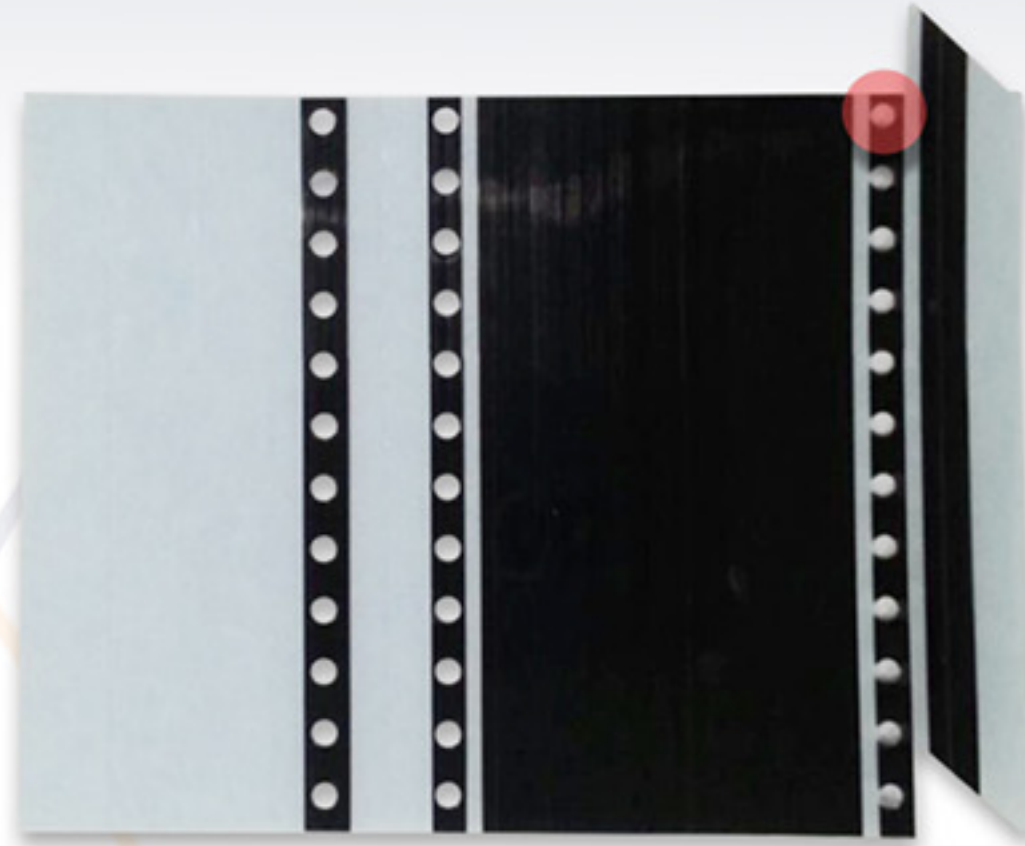


FEATURES

- ✓ Special Cutting with Diagonal (Less Jamming)
- ✓ Holes for Pins (Feeding Hole) Bottom & Top
- ✓ Easy to use by beginner and eliminates human error
- ✓ Compatible with splicing jig
- ✓ No splice clip needed

DOUBLE SPLICE TAPE

Descriptions	Specification	Model No.
Double Splice Tape(44mm)	For embossed Carrier Tapes	EMB-144P DH



No special clips required
with special tape

➔ **DETECTION MOUNTER** Panasonic Mounter
Detection Tape

➔ **MATERIAL** Strong Adhesion / Cover Tape: PET /
Bottom: PET

- Detection
- Feeding hole
- ESD soft

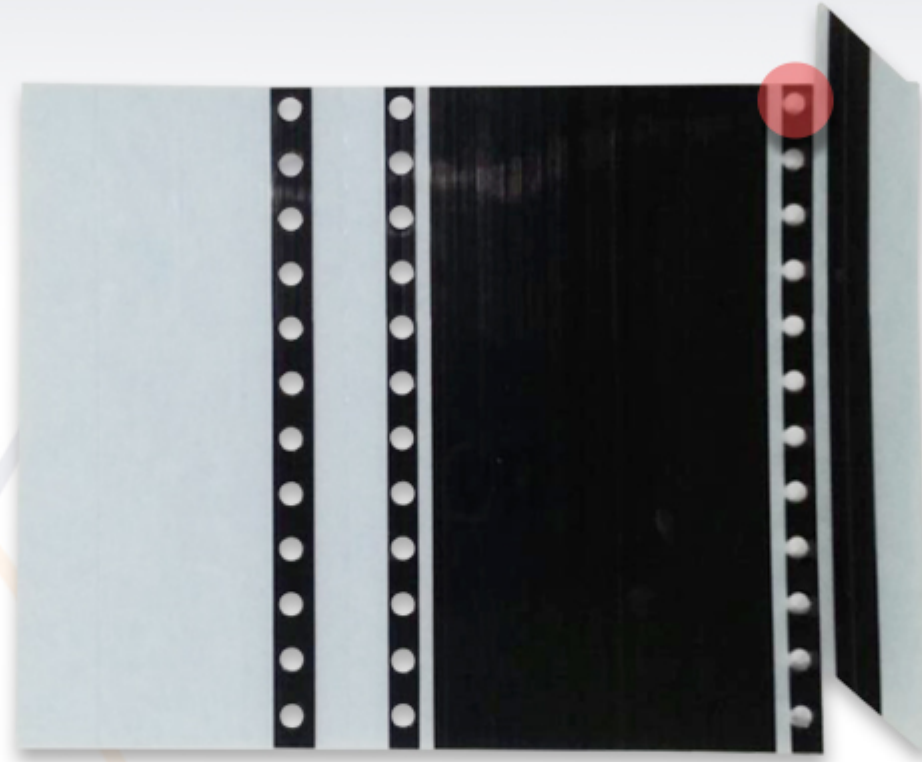


FEATURES

- ✓ Special Cutting with Diagonal (Less Jamming)
- ✓ Holes for Pins (Feeding Hole) Bottom & Top
- ✓ Easy to use by beginner and eliminates human error
- ✓ Compatible with splicing jig
- ✓ No splice clip needed

DOUBLE SPLICE TAPE

Descriptions	Specification	Model No.
Double Splice Tape(56mm)	For embossed Carrier Tapes	EMB-156P DH



No special clips required
with special tape

➔ **DETECTION MOUNTER** Panasonic Mounter
Detection Tape

➔ **MATERIAL** Strong Adhesion / Cover Tape: PET /
Bottom: PET

- Detection
- Feeding hole
- ESD soft

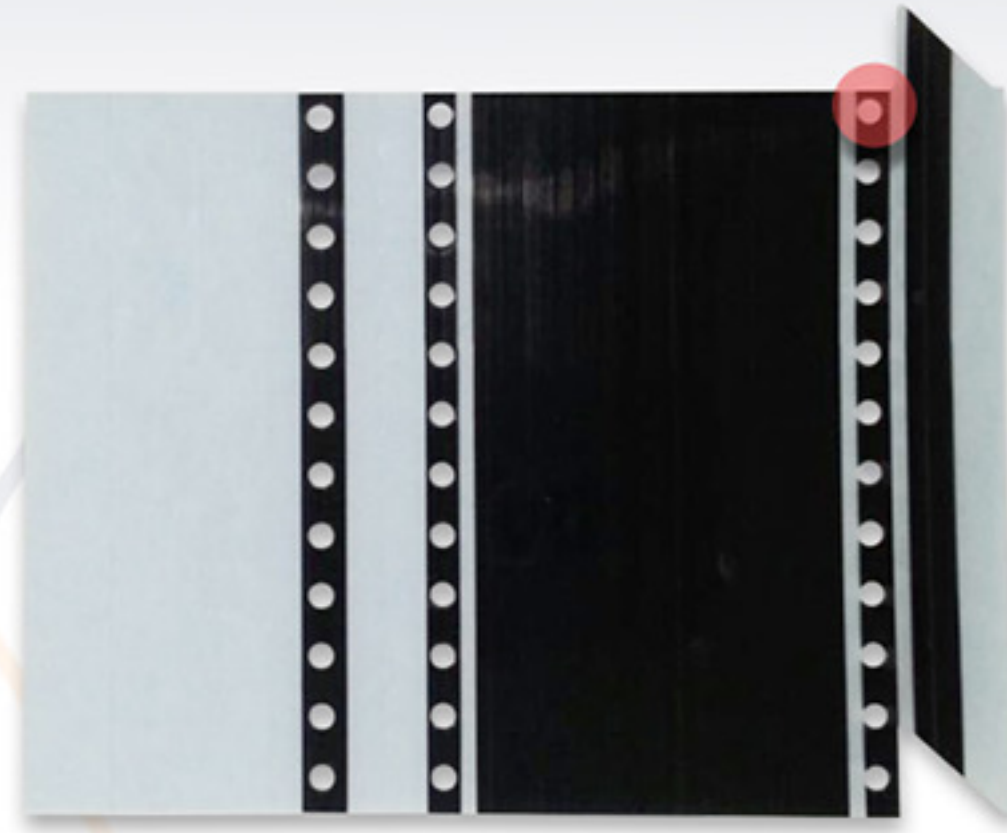


FEATURES

- ✓ Special Cutting with Diagonal (Less Jamming)
- ✓ Holes for Pins (Feeding Hole) Bottom & Top
- ✓ Easy to use by beginner and eliminates human error
- ✓ Compatible with splicing jig
- ✓ No splice clip needed

DOUBLE SPLICE TAPE

Descriptions	Specification	Model No.
Double Splice Tape(32mm)	For embossed Carrier Tapes	EMB-132P DH



No special clips required
with special tape

→ **DETECTION MOUNTER** Panasonic Mounter
Detection Tape

→ **MATERIAL** Strong Adhesion / Cover Tape: PET /
Bottom: PET

- Detection
- Feeding hole
- ESD soft



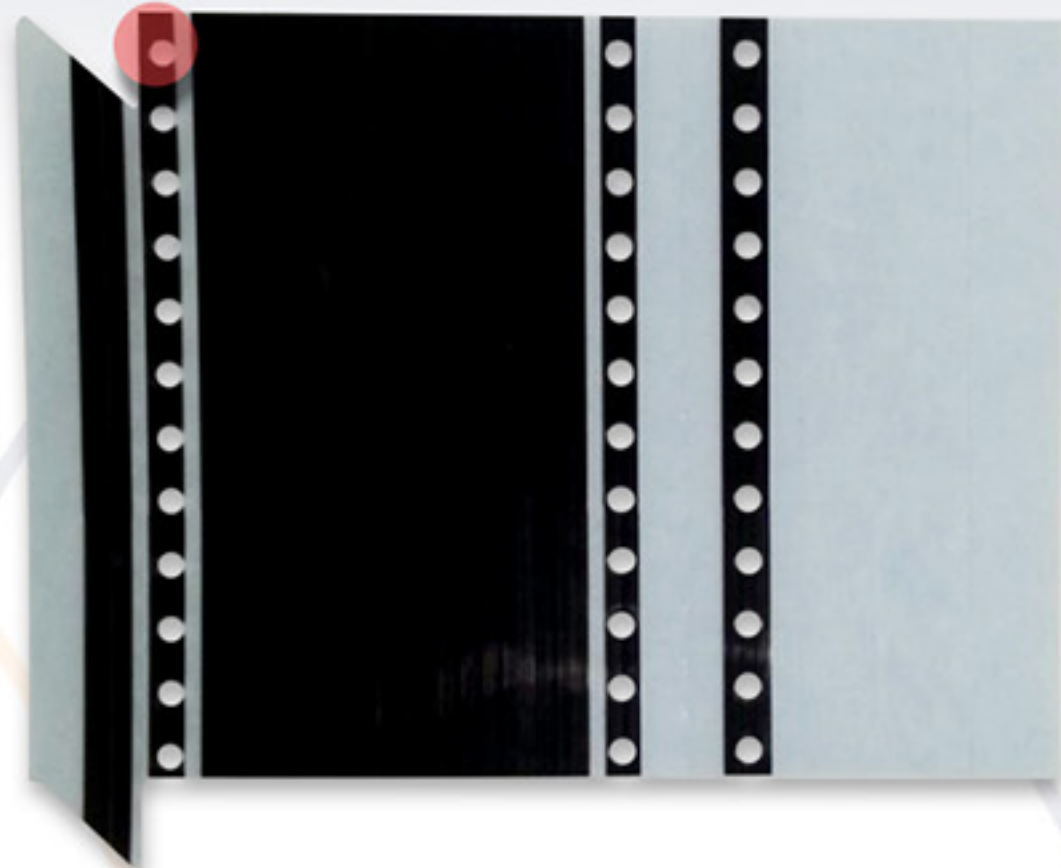
FEATURES

- ✓ Special Cutting with Diagonal (Less Jamming)
- ✓ Holes for Pins (Feeding Hole) Bottom & Top
- ✓ Easy to use by beginner and eliminates human error
- ✓ Compatible with splicing jig
- ✓ No splice clip needed

DOUBLE SPLICE TAPE

Descriptions	Specification	Model No.
Double Splice Tape(72mm)	For embossed Carrier Tapes	EMB-172P DH

No special clips required
with special tape



➔ **DETECTION MOUNTER** Panasonic Mounter
Detection Tape

➔ **MATERIAL** Strong Adhesion / Cover Tape: PET /
Bottom: PET

- Detection
- Feeding hole
- ESD soft

FEATURES

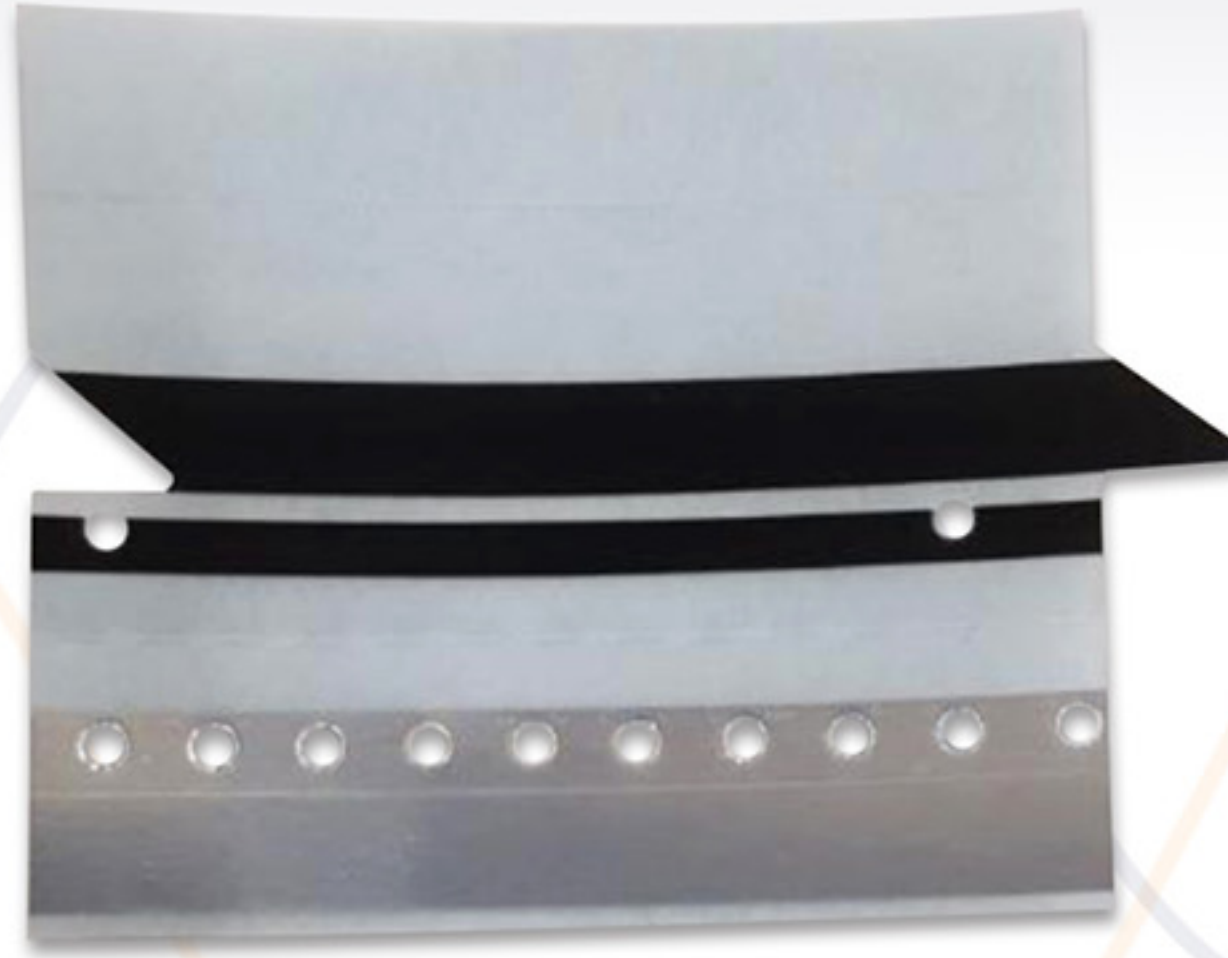
- ✓ Special Cutting with Diagonal (Less Jamming)
- ✓ Holes for Pins (Feeding Hole) Bottom & Top
- ✓ Easy to use by beginner and eliminates human error
- ✓ Compatible with splicing jig
- ✓ No splice clip needed

BSE S SPLICE TAPE

Panasonic Mounter Detection

BSE S SPLICE TAPE

Descriptions	Specification	Model No.
BSE S SPLICE TAPE (8mm)	For Paper/Embossed Carrier Tape	BSE-108VS



FEATURES

- ✓ Compatible with embossed carrier tapes
- ✓ No splice clip needed
- ✓ Able to detect PANASONIC

SPECIAL BL SPLICE TAPE

FUJI/ASM(SIEMESN) Mounter Detection

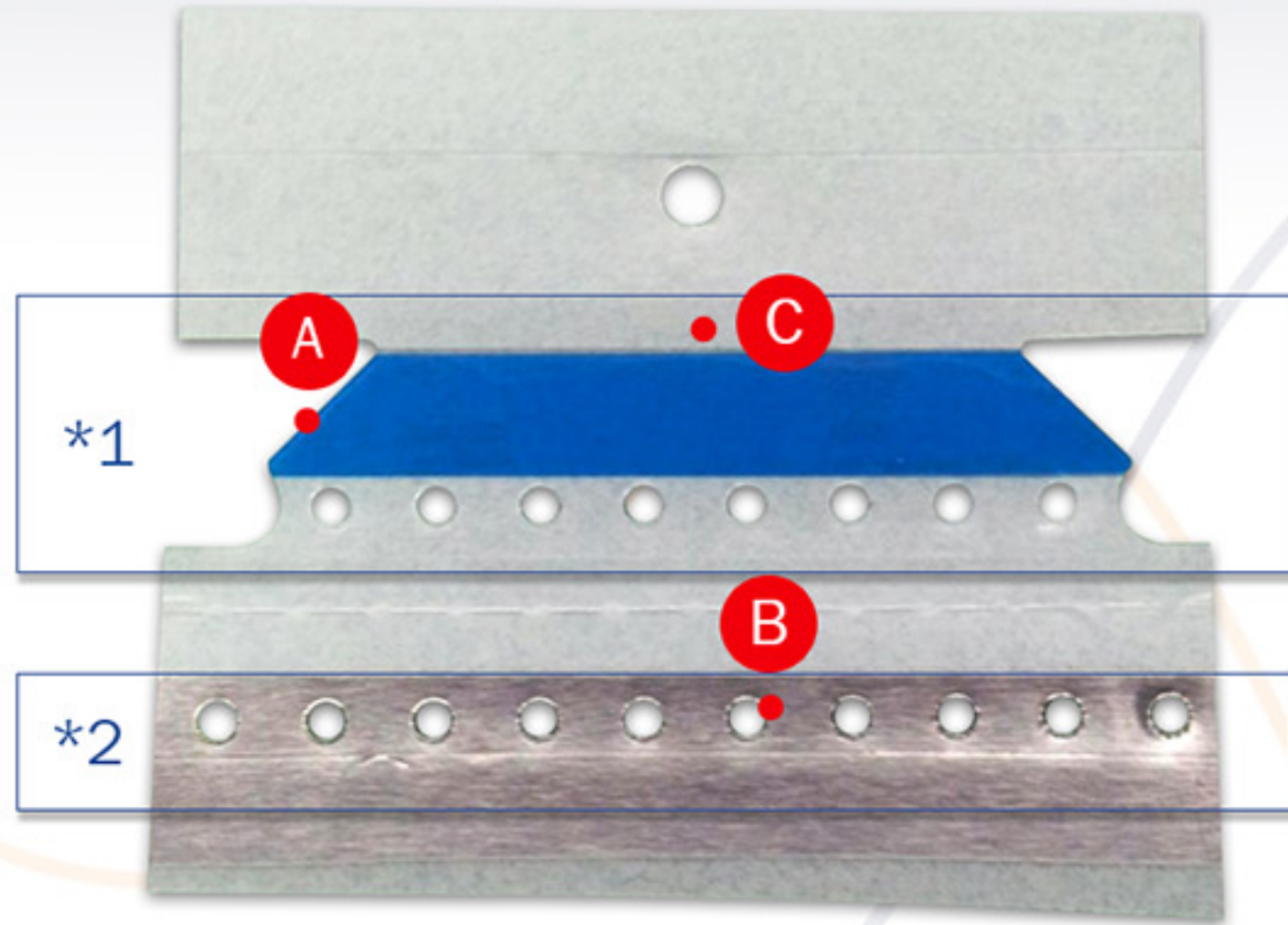
DOUBLE SPLICE TAPE

DOUBLE SPLICE TAPE | ESD SAFE POSSIBLE | FEEDING HOLE TAPE-BOTTOM | SBL | DETECTION POSSIBLE

Descriptions	Specification	Model No.
Double Splice Tape(8mm)	Sensing Tape/Silver/Fuji Mounter/500EA/40mm/Hole Tape	SR-108S/SR-108BL

→ DETECTION MOUNTER ASM(SIEMENS) FUJI

→ MATERIAL Strong Adhesion / Cover Tape: PET / Bottom: AL



*1: Top cover tape side

*2: Bottom cover tape side



- ✓ Special diagonal cutting (Less Jamming)
- ✓ Holes for Pins (Feeding Hole) Bottom & Top
- ✓ 2 Row
- ✓ Feeding Hole
- ✓ Easy to use by beginners and eliminates human error
- ✓ Compatible with splicing jig
- ✓ No splice clip needed

A A Diagonal Cutting: Better detaching

B Feeding Hole Tape: No splice clip needed

B P.E.T: Component and connection viewable

· Detection

· Feeding hole

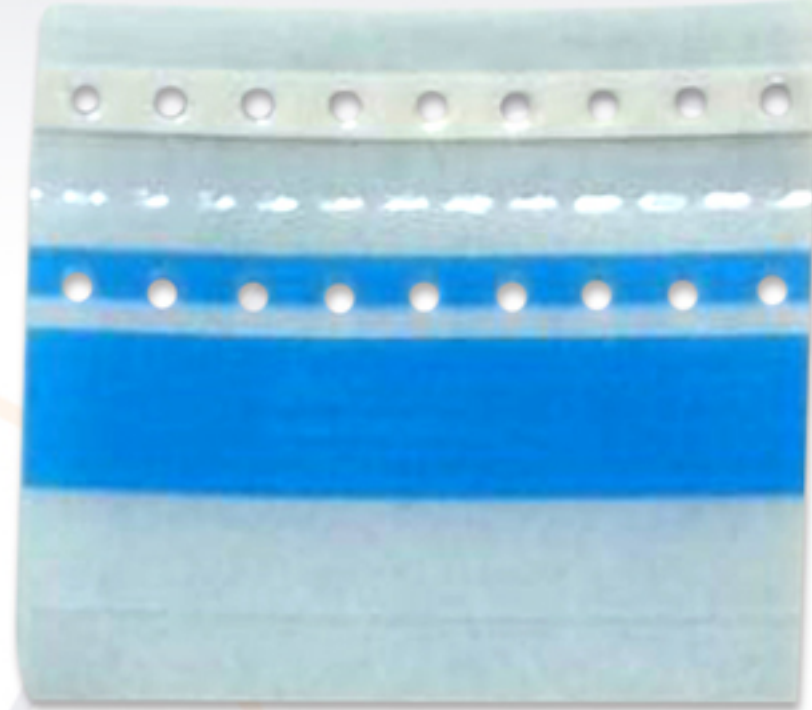
· ESD soft

EMB SPLICE TAPE

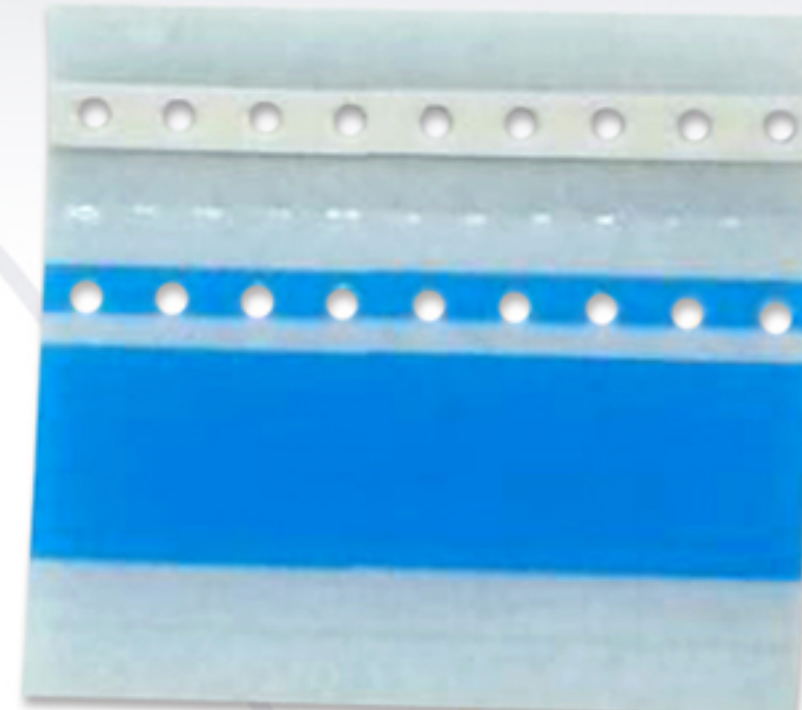
[EMB-108BL]



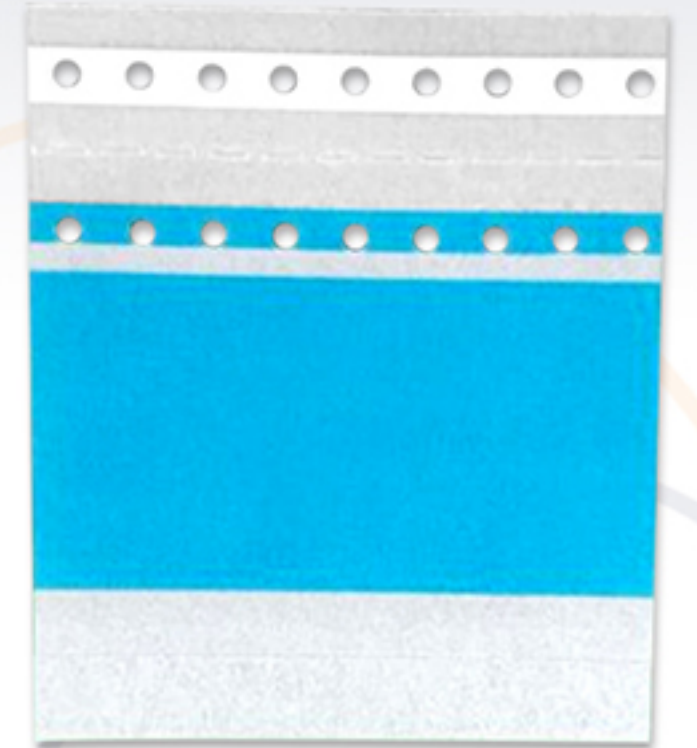
[EMB-112BL]



[EMB-116BL]



[EMB-124BL]



➔ SPECIAL TAPE APPLIED

➔ DETECTION MOUNTER FUJI, SIEMENS MOUNTNER

➔ APPLICATION For Embossed Carrier Tape 8mm



FEATURES

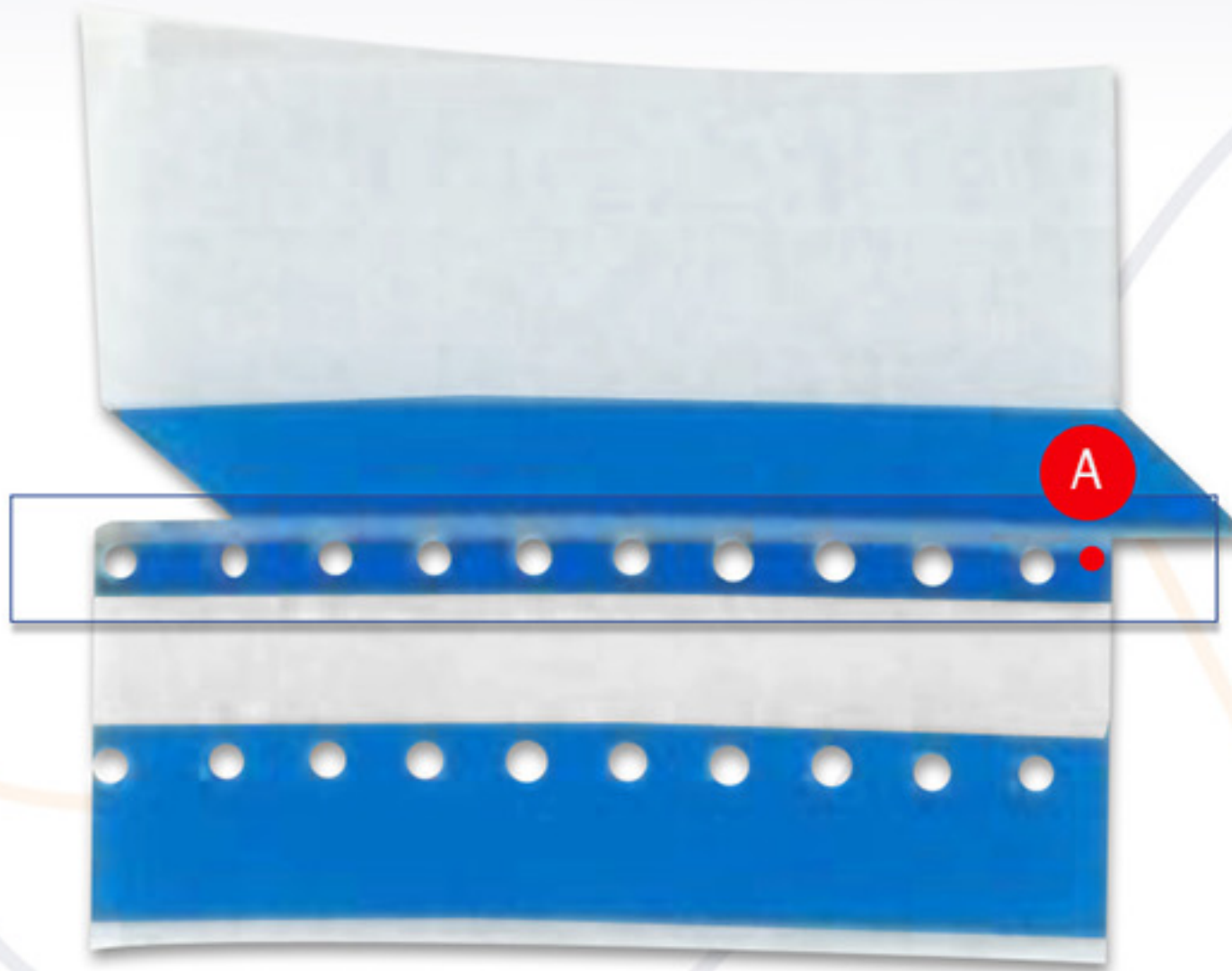
- ✓ Compatible with embossed carrier tapes
- ✓ Special tape in the feeding hole
- ✓ No special clips required with special tape
- ✓ Can be detected in SIEMENS/ASM, FUJI MOUNTER

DTB N3 TAPES

DOUBLE SPLICE TAPE

DOUBLE SPLICE TAPE | ESD SAFE POSSIBLE | FEEDING HOLE TAPE-BOTTOM | BLUE COLOR | DETECTION POSSIBLE

Descriptions	Specification	Model No.
Double Splice Tape(8mm)	No Sensing/Blue/Row2/Hole Tape/H type	DTB-108R



➔ **DETECTION MOUNTER** No detection Normal Tape

➔ **MATERIAL** Strong Adhesion / Cover Tape: PET / Bottom: PET



- ✓ Holes for Pins (Feeding Hole) Bottom & Top
- ✓ 2 Row
- ✓ Feeding Hole (1)
- ✓ Easy to use by beginners and eliminates human error
- ✓ Compatible with splicing jig

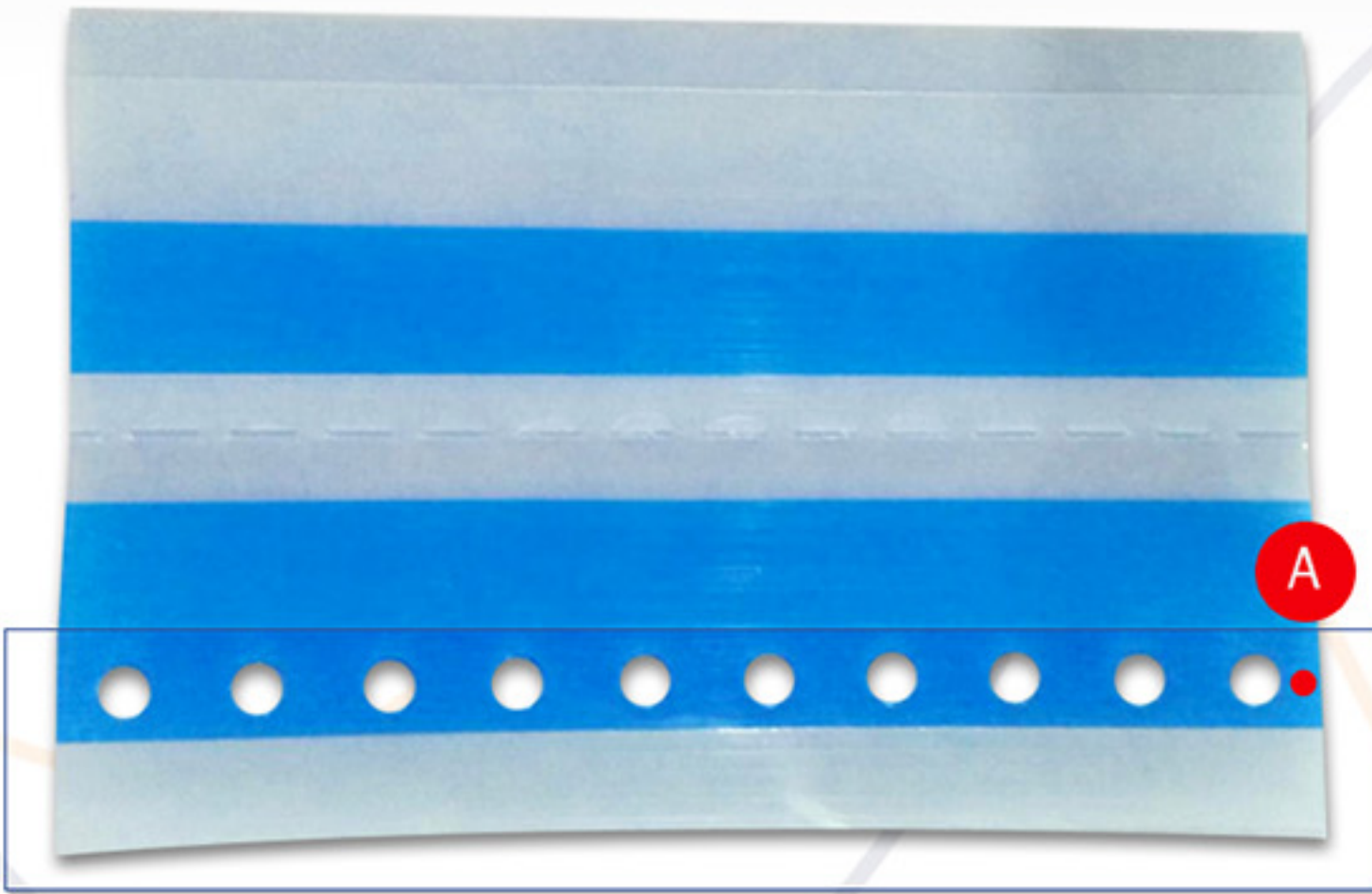
- Detection
- Feeding hole
- ESD soft

A Feeding Hole Tape: For stronger carrier tape connection, No needed of slice clip

DOUBLE SPLICE TAPE

DOUBLE SPLICE TAPE | ESD SAFE POSSIBLE | FEEDING HOLE TAPE-BOTTOM | BLUE COLOR | DETECTION POSSIBLE

Descriptions	Specification	Model No.
Double Splice Tape(8mm)	No Sensing/Blue/Row2/Hole Tape/H type	DTB-108R



→ **DETECTION MOUNTER** No detection Normal Tape

→ **MATERIAL** Strong Adhesion / Cover Tape: PET / Bottom: PET



- ✓ Holes for Pins (Feeding Hole) Bottom & Top
- ✓ 2 Row
- ✓ Feeding Hole (1)
- ✓ Easy to use by beginners and eliminates human error
- ✓ Compatible with splicing jig

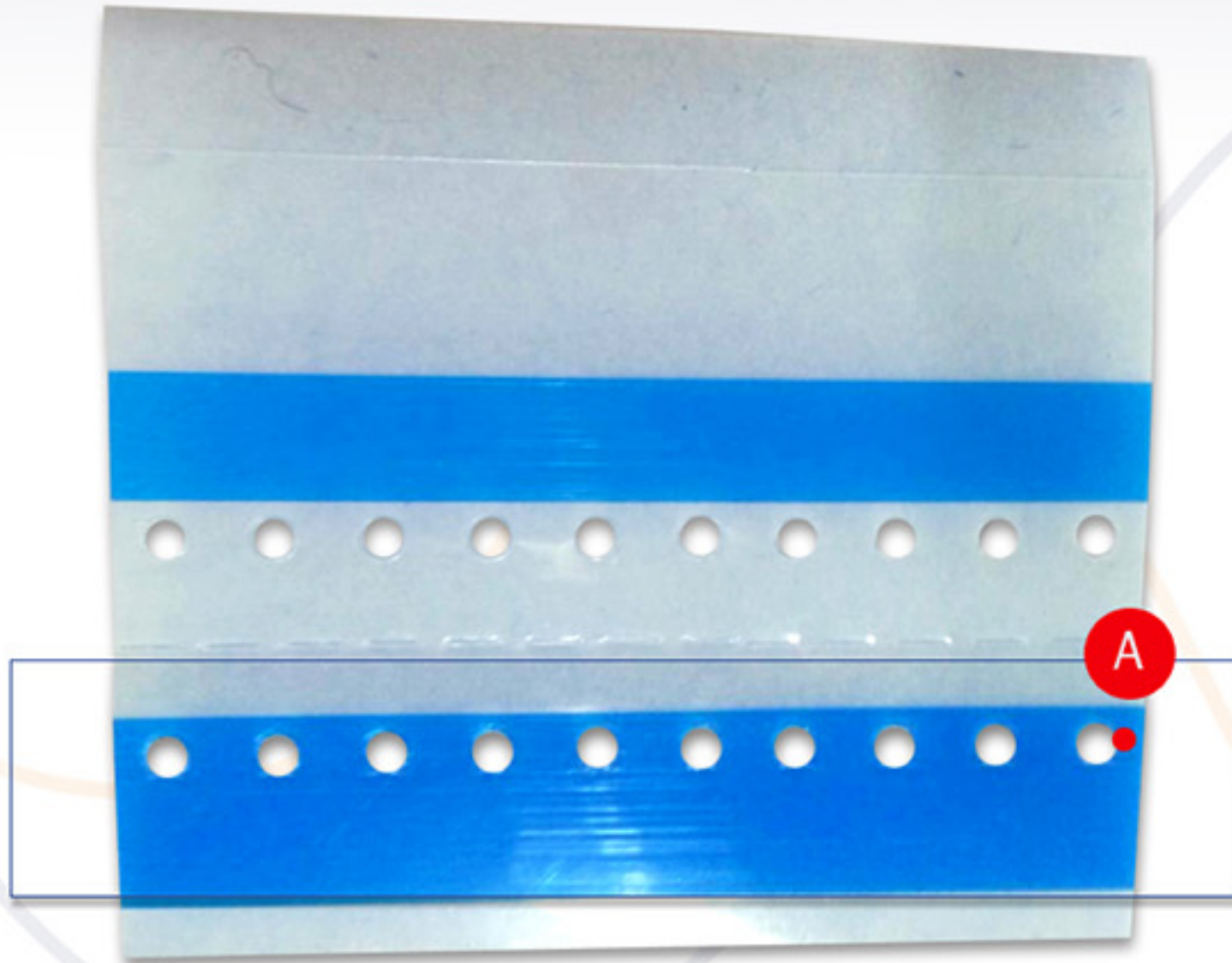
- Detection
- Feeding hole
- ESD soft

A Feeding Hole Tape: For stronger carrier tape connection, No needed of slice clip

DOUBLE SPLICE TAPE

DOUBLE SPLICE TAPE | ESD SAFE POSSIBLE | FEEDING HOLE TAPE-BOTTOM | BLUE COLOR | DETECTION POSSIBLE

Descriptions	Specification	Model No.
Double Splice Tape(8mm)	No Sensing/Blue/Row2/Hole Tape/H type	DTB-108S2



→ **DETECTION MOUNTER** No detection Normal Tape

→ **MATERIAL** Strong Adhesion / Cover Tape: PET / Bottom: PET



- ✓ Holes for Pins(Feeding Hole) Bottom & Top
- ✓ 2 Row
- ✓ 2 Feeding Hole(2)
- ✓ Easy to use by beginners and eliminates human error
- ✓ Compatible with splicing jig

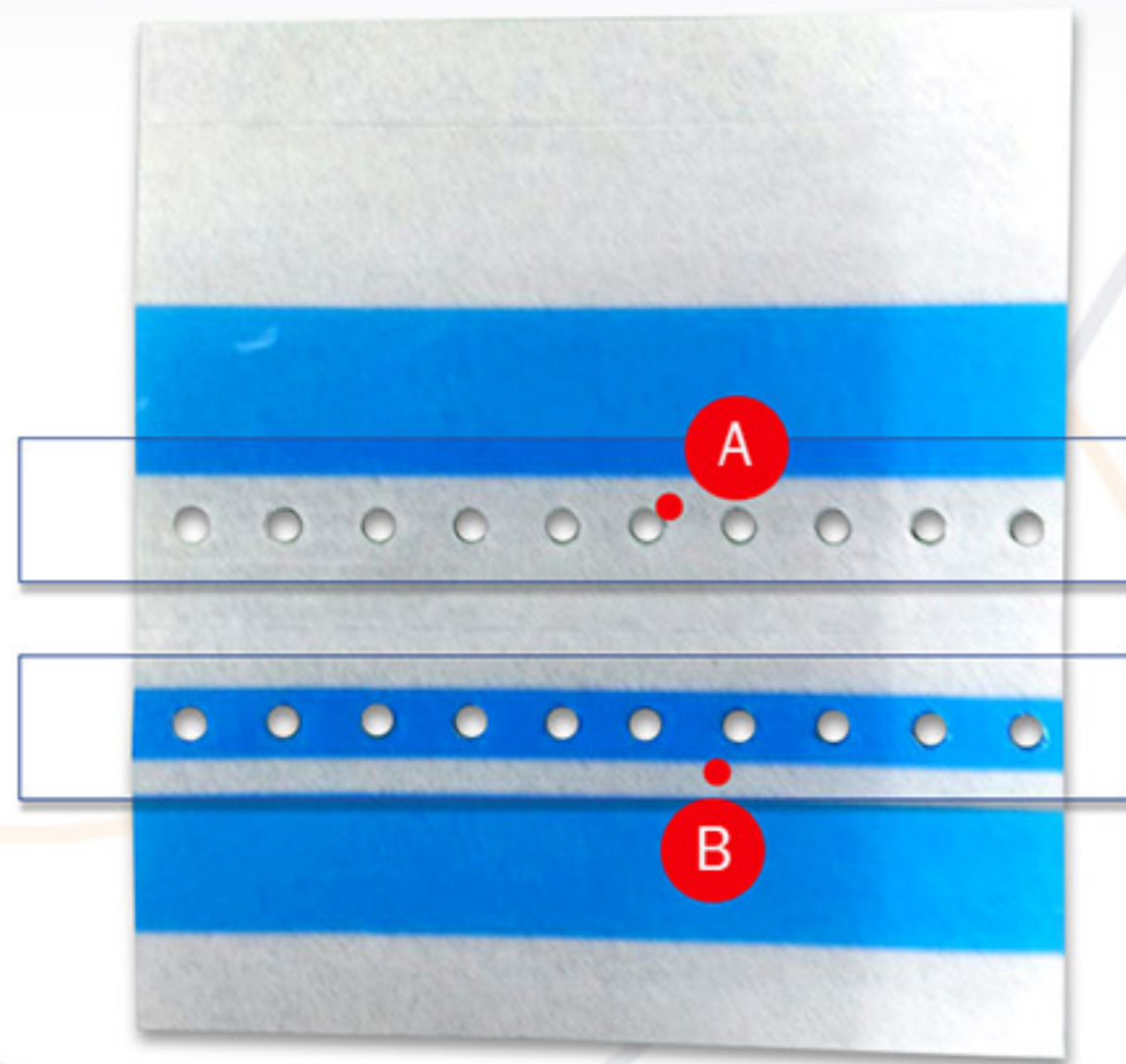
- Detection
- Feeding hole
- ESD soft

A Feeding Hole Tape: For stronger carrier tape connection, No needed of slice clip

DOUBLE SPLICE TAPE

DOUBLE SPLICE TAPE | ESD SAFE POSSIBLE | FEEDING HOLE TAPE-BOTTOM | BLUE COLOR | DETECTION POSSIBLE

Descriptions	Specification	Model No.
Double Splice Tape(12mm)	No Sensing/Blue/3Row/Hole Tape	DTB-112N3



➔ **DETECTION MOUNTER** No detection Normal Tape

➔ **MATERIAL** Strong Adhesion / Cover Tape: PET / Bottom: PET



- ✓ Holes for Pins(Feeding Hole) Bottom & Top
- ✓ 2 Row
- ✓ Feeding Hole (1)
- ✓ Easy to use by beginners and eliminates human error
- ✓ Compatible with splicing jig

A Feeding Hole Tape: For stronger carrier tape connection, No needed of slice clip

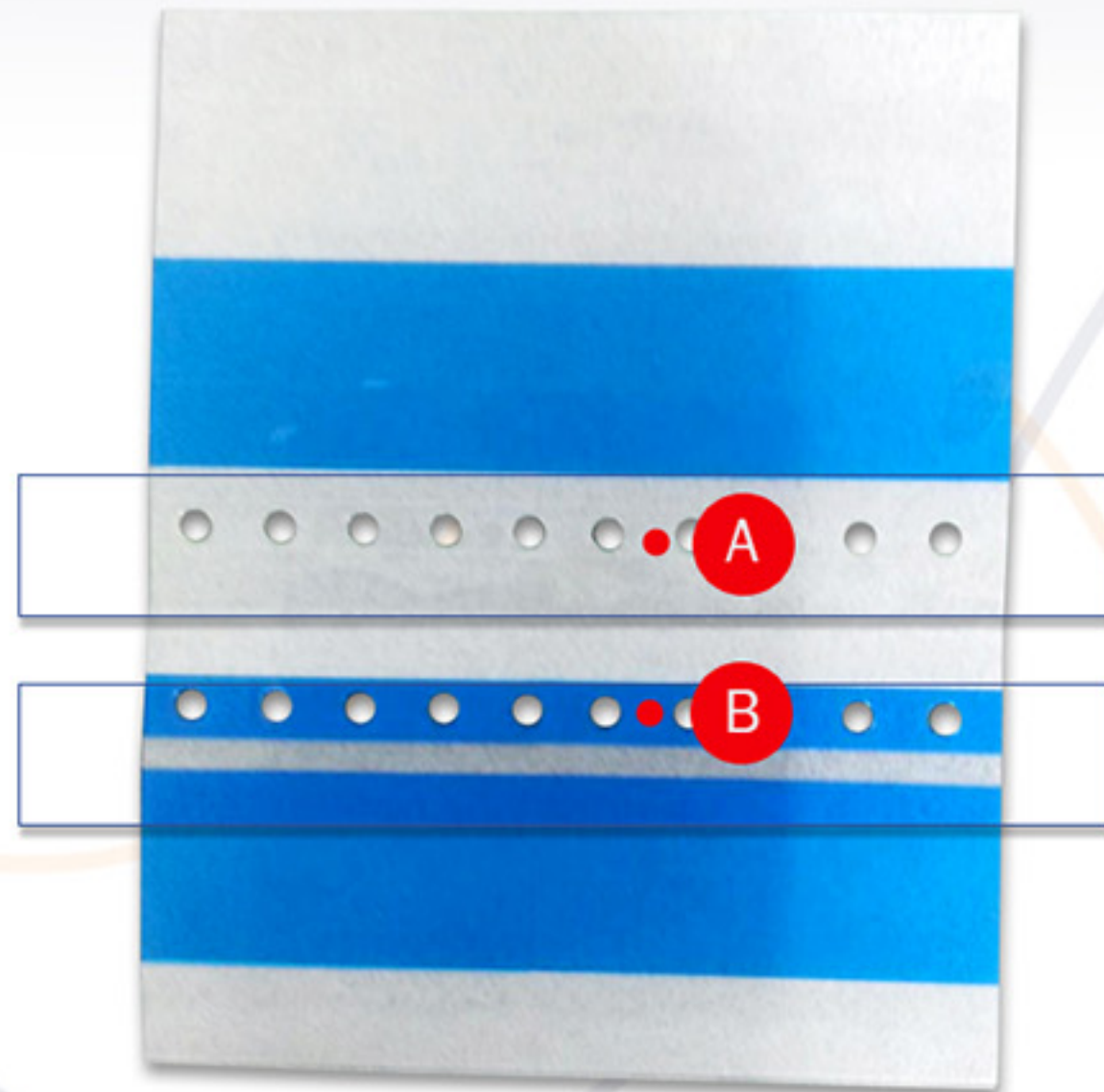
B Space: No Jamming for emboss carrier tapes

- Detection
- Feeding hole
- ESD soft

DOUBLE SPLICE TAPE

DOUBLE SPLICE TAPE | ESD SAFE POSSIBLE | FEEDING HOLE TAPE-BOTTOM | BLUE COLOR | DETECTION POSSIBLE

Descriptions	Specification	Model No.
Double Splice Tape(16mm)	No Sensing/Blue/3Row/Hole Tape	DTB-116N3



➔ **DETECTION MOUNTER** No detection Normal Tape

➔ **MATERIAL** Strong Adhesion / Cover Tape: PET / Bottom: PET



- ✓ Holes for Pins(Feeding Hole) Bottom & Top
- ✓ 2 Row
- ✓ Feeding Hole (1)
- ✓ Easy to use by beginners and eliminates human error
- ✓ Compatible with splicing jig

A Feeding Hole Tape: For stronger carrier tape connection, No needed of slice clip

B Space: No Jamming for emboss carrier tapes

- Detection

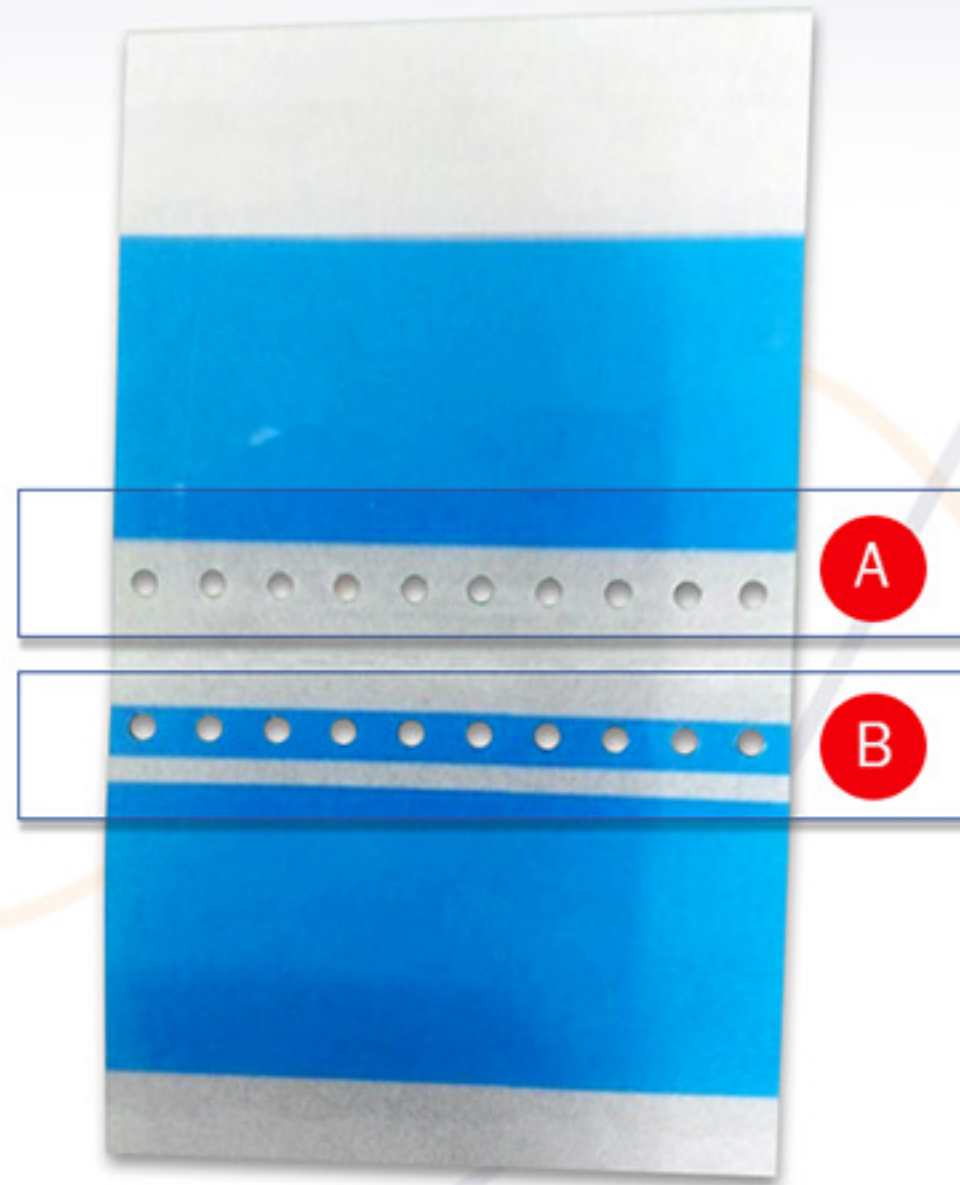
- Feeding hole

- ESD soft

DOUBLE SPLICE TAPE

DOUBLE SPLICE TAPE | ESD SAFE POSSIBLE | FEEDING HOLE TAPE-BOTTOM | BLUE COLOR | DETECTION POSSIBLE

Descriptions	Specification	Model No.
Double Splice Tape(24mm)	No Sensing/Blue/500EA/40mm/3Row/Hole Tape	DTB-124N3



→ **DETECTION MOUNTER** No detection Normal Tape

→ **MATERIAL** Strong Adhesion / Cover Tape: PET / Bottom: PET



- ✓ Holes for Pins(Feeding Hole) Bottom & Top
- ✓ 2 Row
- ✓ Feeding Hole (1)
- ✓ Easy to use by beginners and eliminates human error
- ✓ Compatible with splicing jig

A Feeding Hole Tape: For stronger carrier tape connection, No needed of slice clip

B Space: No Jamming for emboss carrier tapes

- Detection

- Feeding hole

- ESD soft

DTB TAPES

DOUBLE SPLICE TAPE

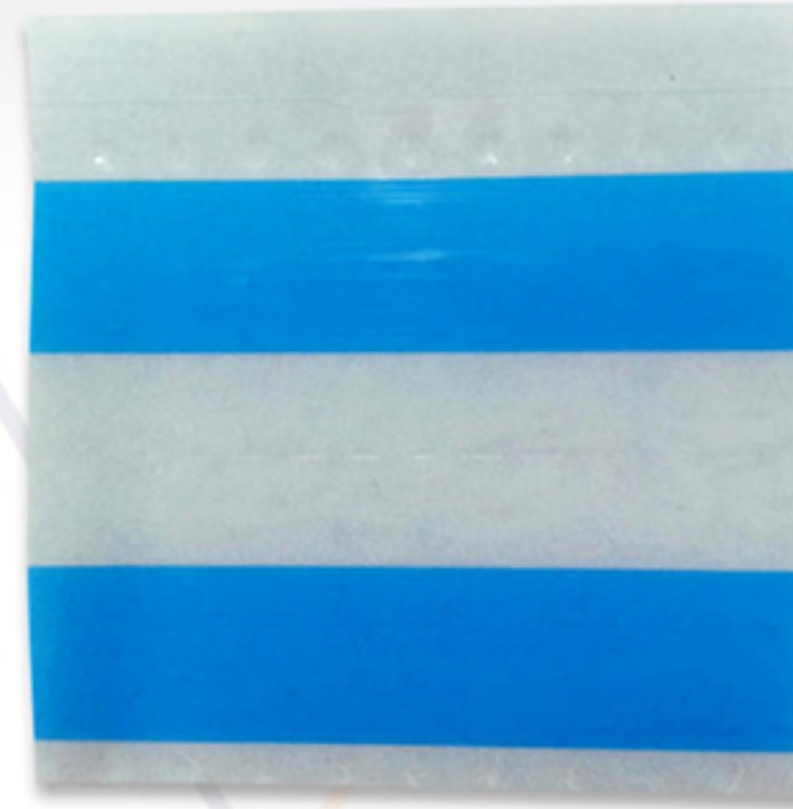
[DTB-108 (8mm)]



[DTB-112 (12MM)]



[DTB-116 (16MM)]



[DTB-124 (24MM)]



➔ APPLICATION Splice paper reel

➔ Economical

➔ No Detection

➔ Dotted

EMS SINGLE TAPE

SINGLE SPLICE TAPE

SINGLE SPLICE TAPE | ESD SAFE IMPOSSIBLE | BLUE COLOR | DETECTION IMPOSSIBLE

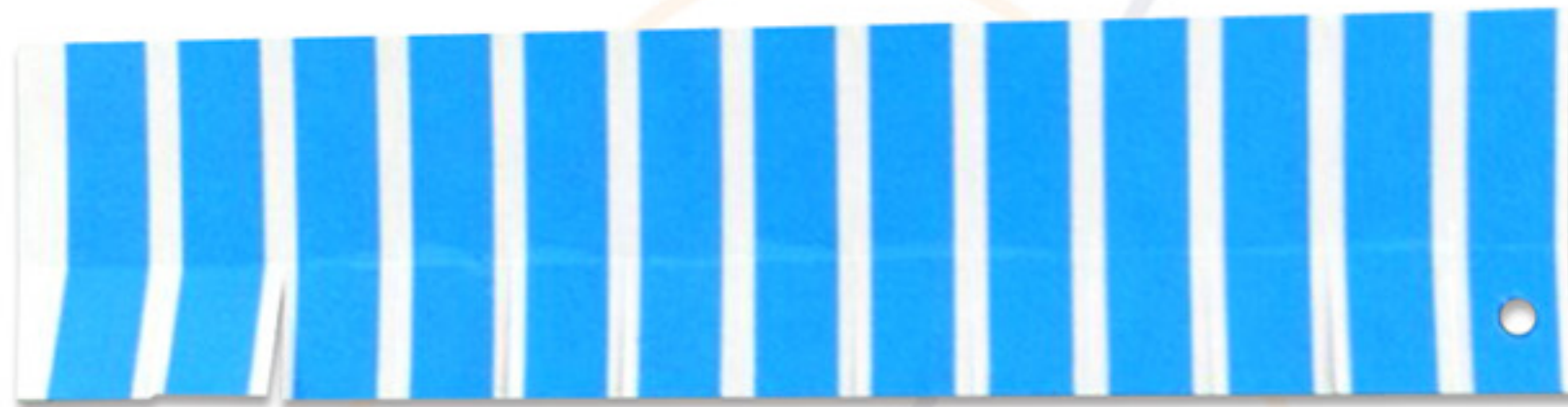
[EMS-103] Single Splice Tape(3mm)



[EMS-105] Single Splice Tape(5mm)



[EMS-108] Single Splice Tape(8mm)



➔ MATERIAL Strong Adhesion / PET



FEATURES

- ✓ Single Splice Tape
- ✓ Easy to use by beginners and eliminates human error
- ✓ Compatible with EMB splice tape

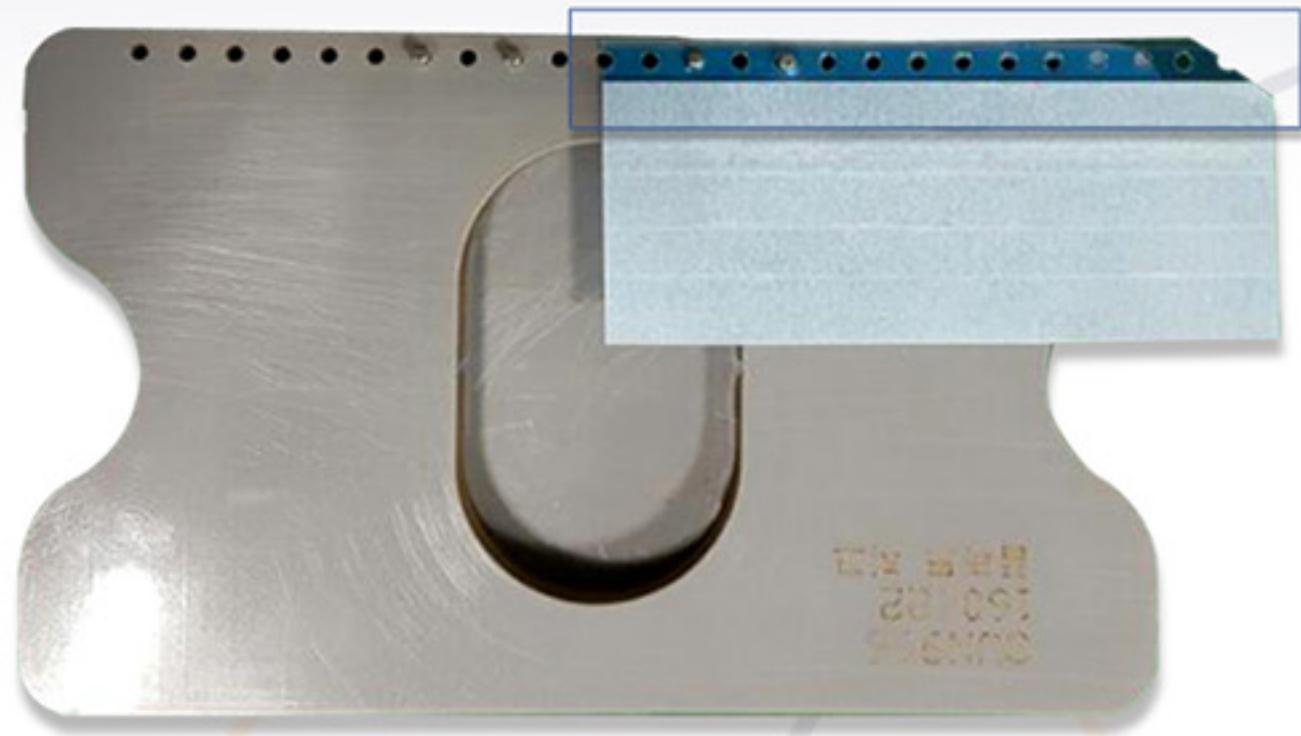
The image features a solid blue background with a subtle, intricate pattern of white lines that resemble a circuit board or a network diagram. The lines are thin and vary in thickness, creating a complex, interconnected web of paths across the entire surface. In the center of the image, the word "OTHERS" is written in a bold, white, sans-serif font. The text is centered both horizontally and vertically, standing out prominently against the blue background and the circuit pattern.

OTHERS

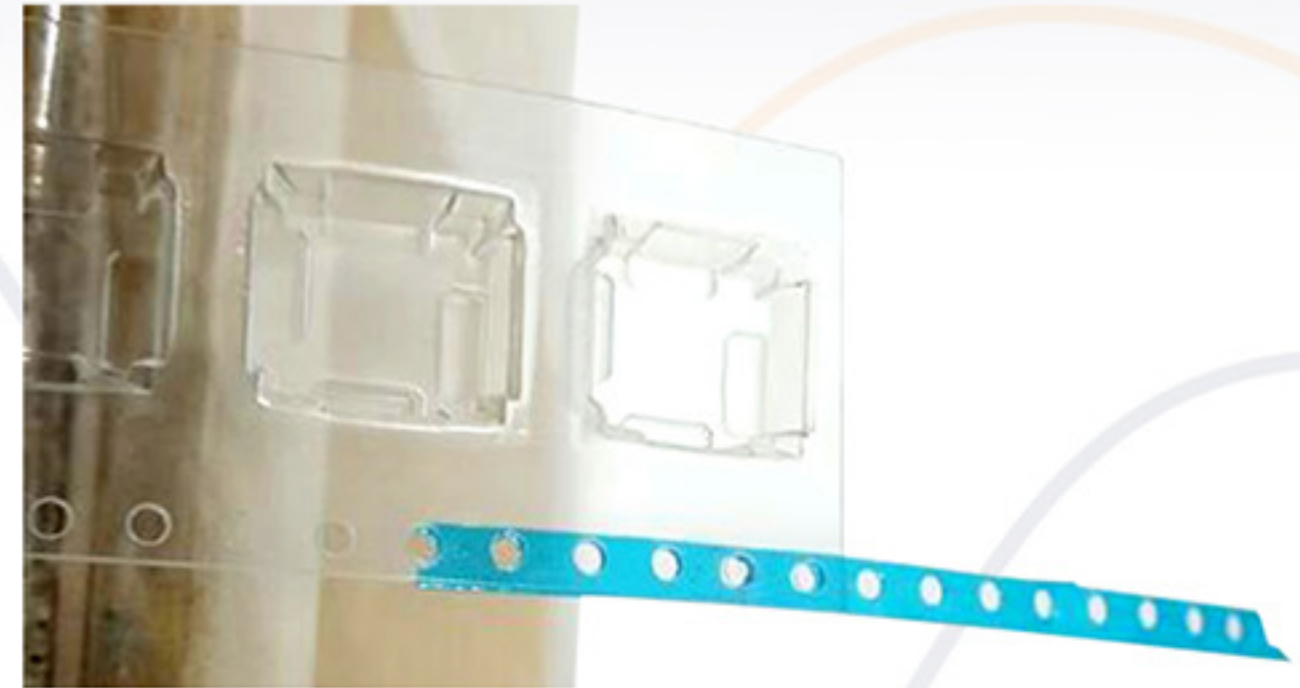
FEEDING HOLE TAPE FOR REEL END CONNECTION

Descriptions	Specification	Model No.
FEEDING HOLE TAPE(ending tape)	FOR END REEL CONNECTION TAPE/500EA	FHT-100

[PREPARATION]



[CONNECTED]



Front



Rear



➔ **APPLICATION** Minimized waste by using all components to the end without using additional components



ADVANCED MECHATRONICS SOLUTIONS, INC

 1 619-661-5985  1 619-661-5995  ams@ams-fa.com

To view additional products..

www.ams-fa.com

