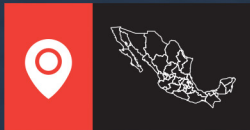
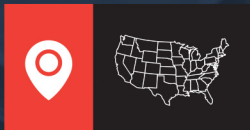


# 2017 **DANPLA** SHEET



## Mexico

Av. Hercules 301B-17, Poligono Empresarial Sta. Rosa Jauregui,  
Queretaro, Qro, C.P. 76220 **Phone:** + 52 (442) 312-0920  
**Email:** support@ams-fa.com



## USA

10030 Via de la Amistad, San Diego, CA 92154  
**Phone:** +1 (619) 661-5985 **Fax:** +1 (619) 661-5995  
**Email:** ams@ams-fa.com



## Brazil

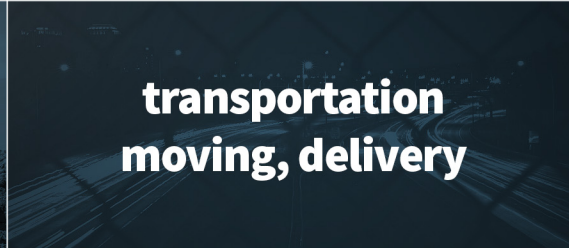
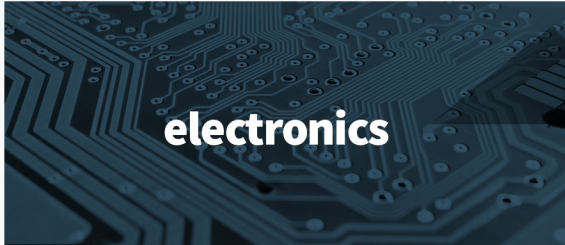
Estrada Municipal Mario Covas, 641 Cond. Industrial Portal Anhanhuera  
Macuco - Valinhos / SP, Brazil 13279 - 411 **Phone:** +55 (19) 2511-4943  
**Email:** quote@ams-fa.com



AUTOMATION, SMT & LEAN MANUFACTURING

[www.ams-fa.com](http://www.ams-fa.com)

**APPLICABLE INDUSTRIES**



**INTRODUCTION TO DANPLA**

**DANPLA**

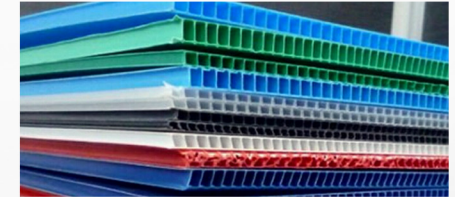
A marker for operation

Plastic

- > A plastic board made of PP through profile extrusion

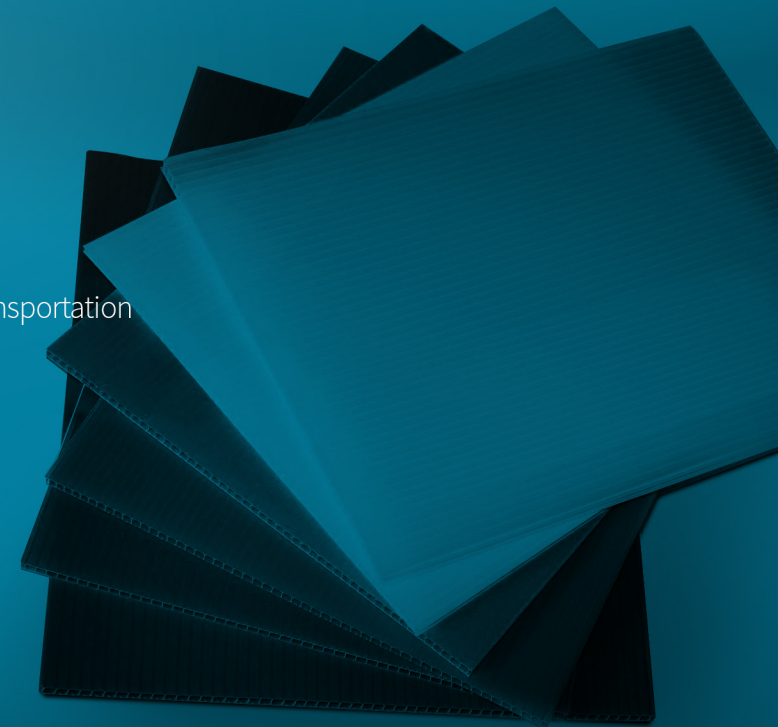
**FEATURES**

- > Customizable
- > Returnable (Reusable)
- > Various colors
- > Resistant to moisture
- > Durable
- > Hollow (Light)
- > Recyclable
- > Low production cost (No mold required)



**INTRODUCTION TO DANPLA**

- > Auto part, electronics, packing of precision machine part, partition for products
- > Electric wire rail board, building material, silencer, bobbin finishing material, agro-fishery transportation
- > Export, returnable case, moving, hanger box
- > Transportation and packing of electronic and precision parts that are sensitive to static



- > Danpla sleeves are bonded by heat welding to form an integrated and sturdy box
- > A front door is provided for improved workability
- > The octagonal sleeve edges protect contents with improved supportability
- > The cross-section of sleeve is round-welded to prevent contamination and to facilitate wet washing
- > The exclusive pallet and the cap in the blower type are sturdy and less vulnerable to damage

**RECTANGULAR**



	Model	Ext. Dimensions (mm)	Int. Dimensions (mm)	Weight (kg)
1	K409	1140 x 980 x H	1080 x 920 x H	30
2	K411	1100 x 1100 x H	1040 x 1040 x H	30
3	K412	1000 x 1200 x H	940 x 1140 x H	35
4	K414	1140 x 1480 x H	1420 x 1080 x H	45

**OCTAGONAL**



	Model	Ext. Dimensions (mm)	Int. Dimensions (mm)	Weight (kg)
1	K811	1100 x 1100 x H	1080 x 920 x H	30
2	K812	1100 x 1200 x H	1040 x 1040 x H	30
3	K814	1100 x 1400 x H	1420 x 1080 x H	45

**1**

BLOW MOLDING APPLIED EXCLUSIVE PALLET  
& CAP BLOW MOLDING

> Sturdy and less vulnerable to damage



**2**

STACKING DOOR

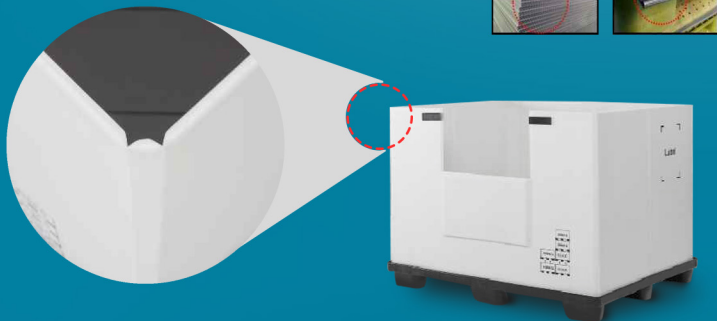
> Easy to load and unload



**3**

BLOCKED SLEEVE IN ROUND SHAPE

> For water-proofing & safe operation



**4**

LOADING GROOVE ON TOP OF CAP

> Sturdy stacking for safe transportation



**DISASSEMBLY & STACKING**



**1**



**2**



**3**



**4**



**5**



**6**



**7**



**8**




**9**



**10**

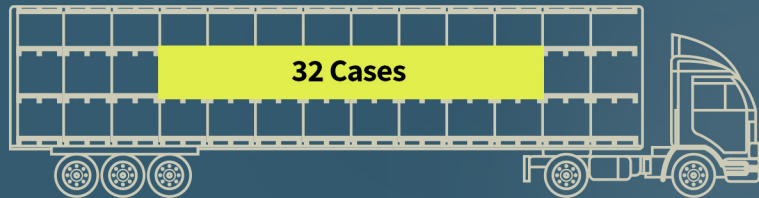
## QUANTITY

 = Quantity loaded in a 40 ft High Cubic Container  
(Product size: 1480 x 1140 x H)

**Loading:** 32 cases

**Collection:** 144 cases (When case is separated: 224 sets)

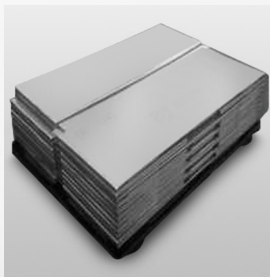
**Loading**



**Collection**



## LOADING & COLLECTION



**HEAD LAMP  
PACKING PROCESS**



**STACKING  
& STORAGE**



## AGRO-PRODUCT PACKAGING BOXES

### LEADING IN THE ADVANCEMENT OF AGRO-PRODUCT PACKAGING BOXES

- > Organized a conference with Seoul Agro-fisheries & Food Corporation (Seoul Agro) and logistics experts
- > Entered into MOU with Joongang Fruit (a representative company of Seoul Garak Market and successfully improved the logistics system (joint design patent applied)
- > Successfully completed the pilot rental project with Seoul Agro-fisheries & Food Corporation and leading logistics rental companies for distribution of water melon and spring onion
- > The above project is now expanded to other products (including winter radish etc)
- > Boxes are returnable, or disposable. Boxes can be rented



**GM KOREA - SPAIN**

---



**APPLICATION OF  
KD BOXES AT GM'S  
BUPYEONG FACTORY**

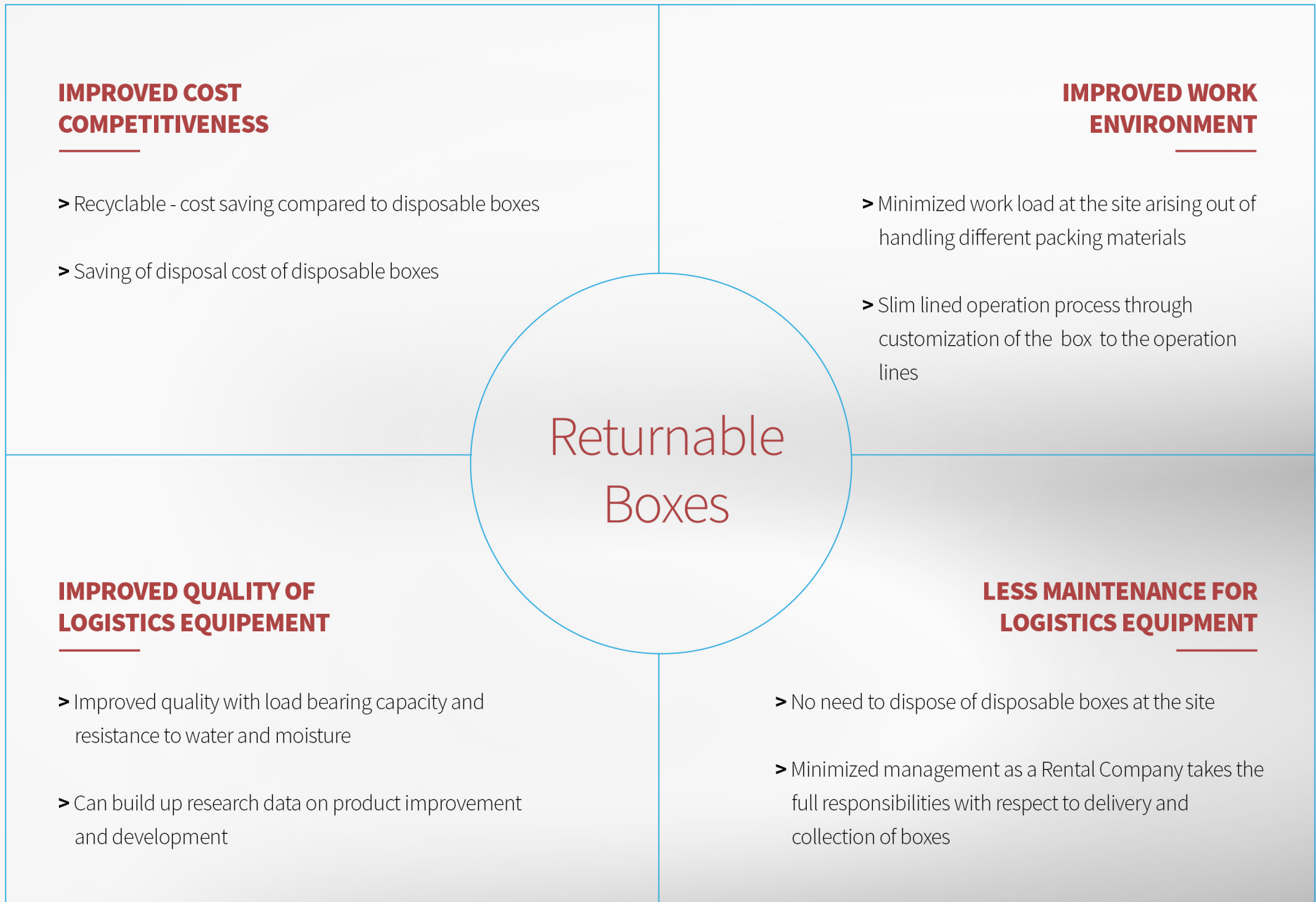
---



**YANGJU LOGISTICS  
CENTER OF AJU RENTAL**

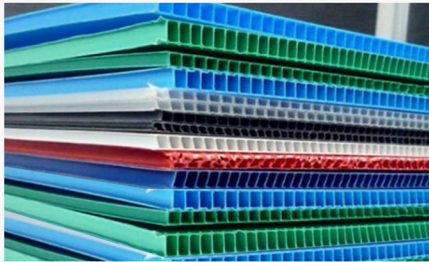
---





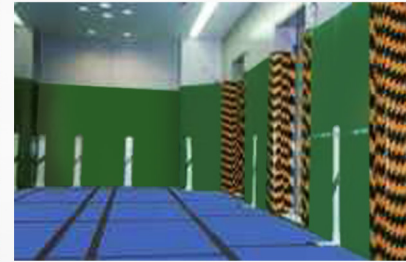
### **DANPLA SHEET**

In customized thickness & color



### **BUILDING MATERIALS**

Danpla sheet used in installation of construction materials



### **GLASS SHEET**

Blocked corrugated sheet for glass bottles, PET bottles & can manufacturers



### **BOBBIN PAD**

Danpla pad for bobbin finishing



### **AUTO PART BOX**

Partition box to protect products from scratching



**SMALL PRODUCTS**

Exclusive sponge used to protect small products



**FOLDABLE (A TYPE)**

Typical type for moving box



**ELECTRONIC PRODUCTS**

Anti-static Suitable for electronic products



**PARTITION FOR INJECTED BOX**

Exclusive partition for plastic box



**FOLDABLE (PIZZA BOX TYPE)**

Customized size for various applications



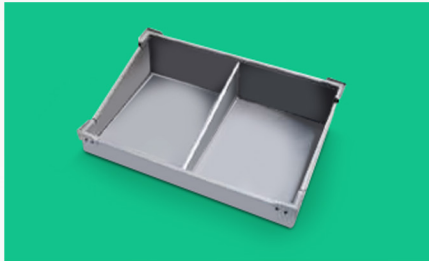
**FIXED (CT TYPE)**

Customized to the characteristics of products to be transported



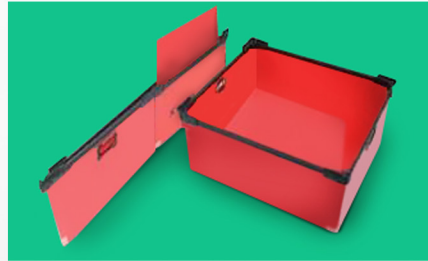
**TIDY-UP BOX**

For tools and tidy-up purposes



**FOLDABLE (AC TYPE)**

Stackable. Storable in flat form



**STORAGE BOX**

Assembly type box for home  
(For storing garments)



**EXPORT PACKAGING**



**PARTITION ON A VEHICLE**



## **STRENGTH**

> Customizable to application, design and function. Low mold cost

## **APPLICATION**

> Automobile interior & exterior mold, construction, interior, other functional structures, etc

## **CROSS SECTION**

