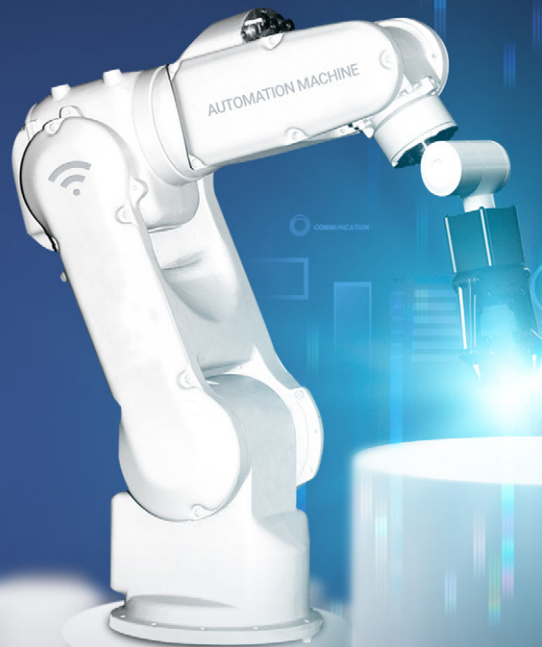


2024 AMS PROFILE

To view our products..

www.ams-fa.com





2002

AMS, Inc was founded in 2002 to provide innovative systems, products, and solutions to manufacturing industries in North and South America



for 22 years

We have engineered automated equipment to implement lean manufacturing process while providing continuous improvement.



2024

Today, AMS is a leader in factory automation. We deliver advanced, technology-driven products and services to enable cost-effective growth for our clients.





BUSINESS INTEGRITY

AMS believe in honesty, diligence and reliability. We hold ourselves to the highest ethical standards to strengthen relationship with our clients and suppliers.



SOCIAL RESPONSIBILITY

AMS is committed to sustainable development. We aim to promote environmental friendly products through research and procurement.



PEOPLE FIRST

AMS value diversity and innovation. We care about people and the impact of our decisions on those around us.

R&D TEAM

AMS Research and Development team focus in advanced technology that will benefit people.
A super-intelligent, human-friendly technology that will provide limitless factory automation.

01 RESEARCH

We study, analyze and develop systems to simplify the work that people do.



02 DEVELOPMENT

We develop new, innovative, and customized systems to increase work productivity while simplifying human tasks.



03 PRODUCTION

We produce efficient and convenient systems to meet client needs



GREEN TECHNOLOGY

At AMS, we think of people and environment first.
That's why we focus our investment and research in sustainable growth and products.



Palletizing Robot

Energy-saving industrial robots

CO₂ reduction equivalent to
0.4 million tons
per year

Zero Waste

Aluminum MRS

Aluminum is an endless recyclable material.



Conserve Energy

Pneumatic Stencil Cleaner



NO Electricity




Environmental pollution Greenhouse gas

DOWN

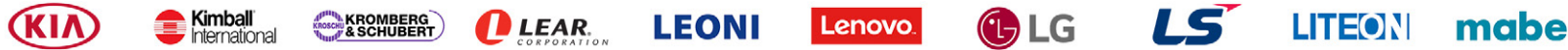
Green Chemistry

ECO Nozzle Cleaner



-  Avoid harmful substances
-  Use of natural ingredients
-  Protecting nature and humanity







Panasonic



PHILIPS

Pioneer

PRETTL
groupRockwell
Automation

SANYO

SCHAEFFLER

SEW
EURODRIVE

SHARP

SHOWA



STANLEY



SONY



SUNPOWER®

Teleplan
Lifecycle care for electronics3M
PurificationTMD
FRICTION

TOSHIBA

TOTO®

TOKAI RIKAI



TPV

TRAMONTINA



TRIUMPH

TRW



Victor



wistron®





ROBOTICS AND AUTOMATION

State of the art technology
providing production flexibility and
acceleration.



LEAN MANUFACTURING

Lean logistics and material handling
management for production and assembly lines.



SMT SOLUTION

Superior quality components at cost-effective prices
on most major brands of assembly equipment.



ESD CONTROL

Products specifically designed for ESD processes
with high quality and world-class performance.

ROBOTICS & AUTOMATION

Total automated production solutions from engineering consulting, design, and products. Innovated and economical products include SMT Equipment, PCB Handling Conveyor, Laser Marking System, AGV, and ErgoLift.



INSERTION MACHINES
FUSE-TERMINAL-RELAY-ODDFORM



BHU(SMT) CONVEYORS



PCB LASER MARKER



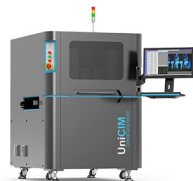
AUTO LABEL PLACER



INKJET MARKING MC



PCB SURFACE CLEANER
(AR TYPE & VACUUM TYPE)



CONFORMAL COATING
INSPECTION SYSTEM



METAL MASK
INSPECTION SYSTEM



AOI
(ODD FORM PARTS)



PCB ROUTER
(STANDALONE & IN-LINE)

ROBOTICS & AUTOMATION

Total automated production solutions from engineering consulting, design, and products. Innovated and economical products include SMT Equipment, PCB Handling Conveyor, Laser Marking System, AGV, and ErgoLift.



PCB LASER DEPANELIZER



AUTO FIFO SOLDER
MANAGEMENT SYSTEM



AUTOMATIC MAGAZINE WIDTH
ADJUSTMENT MC



SELECTIVE / WAVE
SOLDERING MC



AIR BALANCER



COLLABORATIVE ROBOT



PALLETIZING ROBOT



CO2, FIBER, UV, GREEN LASER



3KW LASER CUTTING MC
FOR STEEL SHEET



AUTO SCREW/
NUT FASTENING MACHINE

LEAN MANUFACTURING

Lean material handling and factory automation possibilities with MRS, AL MRS, EZ-Pro, Micro Deck Panel, and Wire Shelf.

SLIDING RACK



WORK STATION



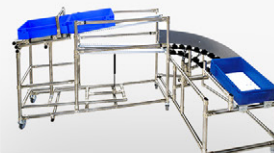
CARTS (DOLLY)



LINE SIDE RACK








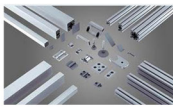






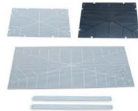
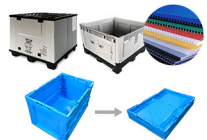


KARAKURI



LEAN MANUFACTURING

Lean material handling and factory automation possibilities with MRS, AL MRS, EZ-Pro, Micro Deck Panel, and Wire Shelf.

 <p>SMART LIGHT</p>	 <p>BLIND SPOT MONITOR</p>	 <p>CASTER WHEELS</p>	 <p>SCREW DRIVERS</p>
 <p>AGV (AUTOMATIC GUIDED VEHICLE)</p>	 <p>AMR (AUTONOMOUS MOBILE ROBOT)</p>	 <p>STEEL MODULAR RACKING SYSTEMS</p>	 <p>ALUMINUM MODULAR RACKING SYSTEMS</p>
 <p>PMP (PICK TO LIGHT: POKAYOKE)</p>	 <p>POWER PALLET</p>	 <p>POWER CART</p>	 <p>POWER ROLL</p>
 <p>ERGONOMIC LIFT (AUTOMATIC & MANUAL)</p>	 <p>EZ-PRO (SCRATCH FREE)</p>	 <p>EZ-SLIDE</p>	 <p>COLLAPSIBLE/ RETURNABLE BOXES & DANPLA SHEET</p>

SMT SOLUTION

Wide variety of SMT Parts with quality from splicing tapes to glue, here you can get most of the parts you need in SMT processes

GO GREEN



STENCIL MASK CLEANER



X-RAY CHIP COUNTER



N2 GENERATOR

GO GREEN



NOZZLE SUCTION ROUTE CLEANER

GO GREEN



NOZZLESCOPE



STRESS ZERO PCB V CUTTER



PCB "V" CUTTER



FLOOR MARKING TAPE AND CUSTOM SIGNS



AUTOMATIC SOLDER PASTE DISPENSER



RH DRY CABINET

SMT SOLUTION

Wide variety of SMT Parts with quality from splicing tapes to glue, here you can get most of the parts you need in SMT processes



STANDARD & CUSTOM NOZZLE



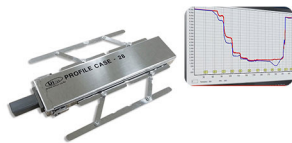
SPLICE TAPES, CLIPS & DEVICE



FBUP & MBUP FOR MOUNTER & PRINTER



SQUEEGEE BLADE FOR SCREEN PRINTER



IN-LINE O2 (N2) ANALYZER



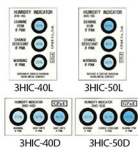
UI-HI CAMERA



WAVE CHECKER



REFLOW CHECKER



HUMIDITY INDICATING CARD



SHOE SOLE/ CASTER WHEEL CLEANER



UNDER STENCIL PAPER ROLL



TAPE/LABEL DISPENSER

ESD CONTROL

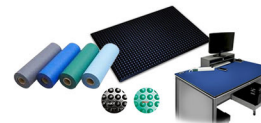
Superior quality components at cost-effective prices on most major brands of assembly equipment.



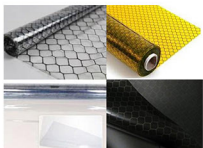
SOFT X-RAY &
CORONA IONIZER



CONDUCTIVE MAGAZINE
RACK



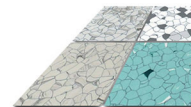
ESD TABLE/
FLOOR ANTI-FATIGUE MAT



ESD PVC CURTAIN



ESD CLEAN
ROOM PVC FILM



ESD TILES



HAND CLEANING
ROLLER



HAND-HELD
ELECTROSTATIC
FIELD METER



ESD TESTER



TURNSTILE GATE



ANTISTATIC HEEL
STRAP /
WRIST STRAP



ANTISTATIC
MOISTURE
PROOF BAG /
SHIELDING
BAGS



CONDUCTIVE
CIRCULATION
BOXES



CONDUCTIVE
PCB CARTS

AMS, INC.

Advanced Mechatronics Solutions, Inc
10030 Via de la Amistad, San Diego, CA 92154

T: +1 (619) 661-5985

F: +1 (619) 661-5995

E: ams@ams-fa.com

**AMS de MEXICO**

AMS Factory Automation de Mexico SA de CV
Polígono Buenavista – Calle Cementera Lote 9, Mz 8
Ejido Buenavista - Querétaro, Qro. 76225

T: +52 (442) 312-0920

E: mexico@ams-fa.com

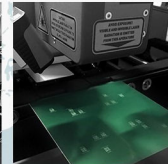
AMS Dynamics, Inc.

6690 Jones Mill Ct Ste C, Peachtree Corners, GA 30092

T: +1 (770) 864-5394

F: +1 (678) 691-1847

E: infoATL@ams-fa.com

**AMS do BRASIL**

AMS do Brasil Automação Industrial Ltda

Rua Antonio Raposo Tavares, 363. Macuco Valinhos/SP. 13279-390. Brazil

T: +55 (19) 3849-5555

E: contato@ams-fa.com



ADVANCED MECHATRONICS SOLUTIONS, INC

Automation, SMT & Lean manufacturing

To view additional products..

www.ams-fa.com

